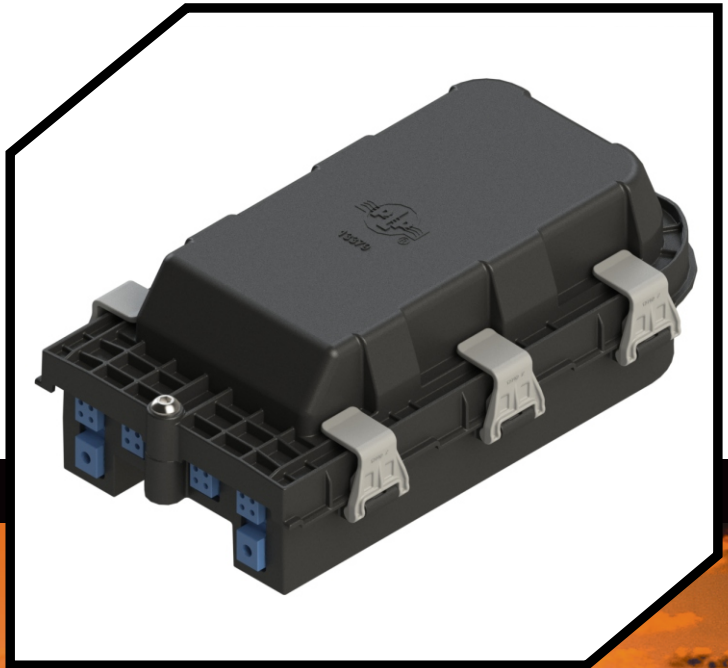


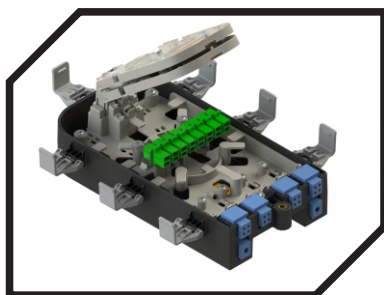


PREFORMED LINE PRODUCTS
The connection you can count on.

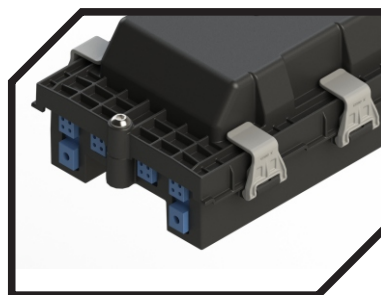
COYOTE® STP-L (Service Termination Point)



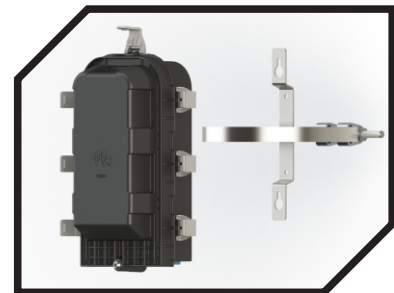
 24-96F Splice Capacity
and Cross-connect facility



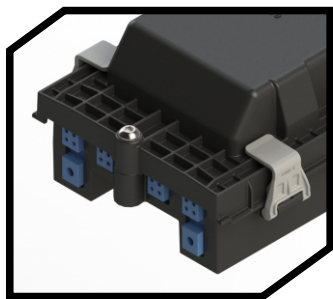
 IP-68



 Underground and
Aerial Application



COYOTE® STP-L (Service Termination Point-Large)

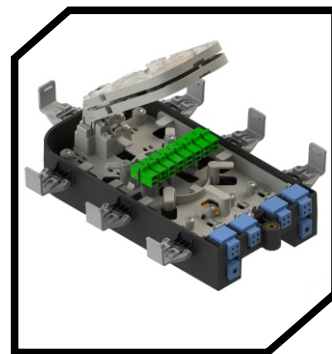


Grommet view
2x Feeder / 16x Drops (Max)

Description

The COYOTE® STP-L is a small scale, cost effective closure which provides an alternative to traditional network interface devices, while offering much greater application flexibility. The closure features a unique design with independent access.

The robust latch system, paired with an integrated overmoulded cover, allows for quick re-entry and creates a secure seal over a wide range of cable profiles.



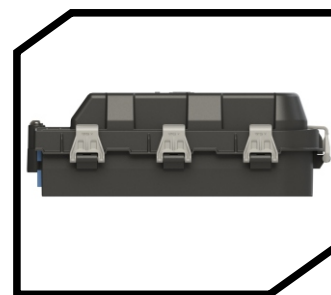
48F 8SC connectors or 16LC



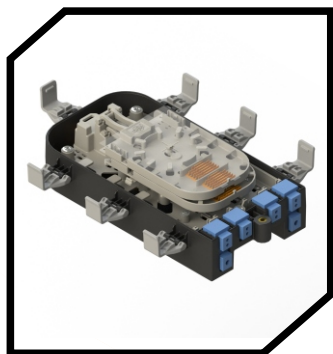
Buffer tube storage area

Key Features:

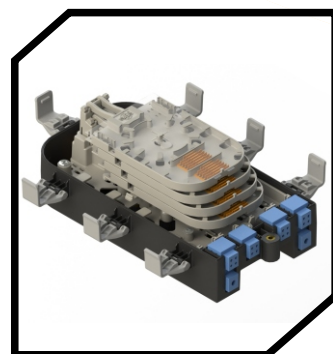
- Can support up to 16 drops with 2 ports for loop through.
- Constructed from UV-stabilized, flame retardant material.
- Robust latch system paired with factory installed gaskets allows for quick re-entry and re-use.
- Versatile design capable of being configured for Splice, Pre-Con and GPON applications.
- Integrated Splitter facility with dedicated Splice protector holder for 2x Micro PLC Splitters and 2x 40mm Splice Protectors.
- Each Splice tray accommodates 2x interchangeable 12F Splice blocks (Double stack) which can be replaced with a PLC Splitter block (Holds up to 4 Splitters).



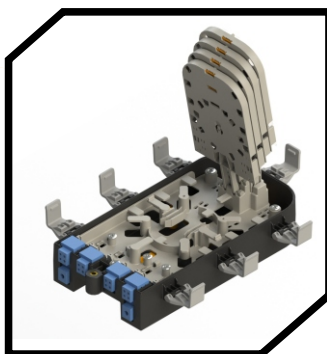
Deep Lid + Base + latches



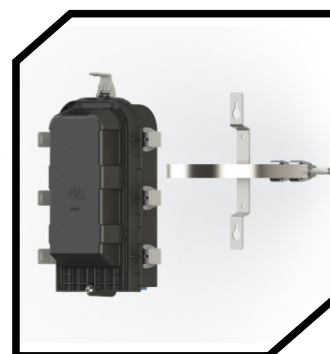
48F Splice Organizer



96F Splice Organizer



PLC Splitter facility with 2x splitter
dedicated splice holders and bare
fibre storage.



Pole Installation


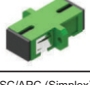


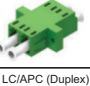

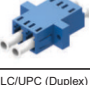
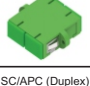

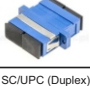
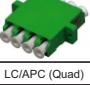
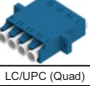
COYOTE STP-L 6 Grommet Design Ordering Instructions

Catalog Number Example: STPL-48-AAAAEE-1-4-N

STP-L - X - XXXXXX - X-X - X

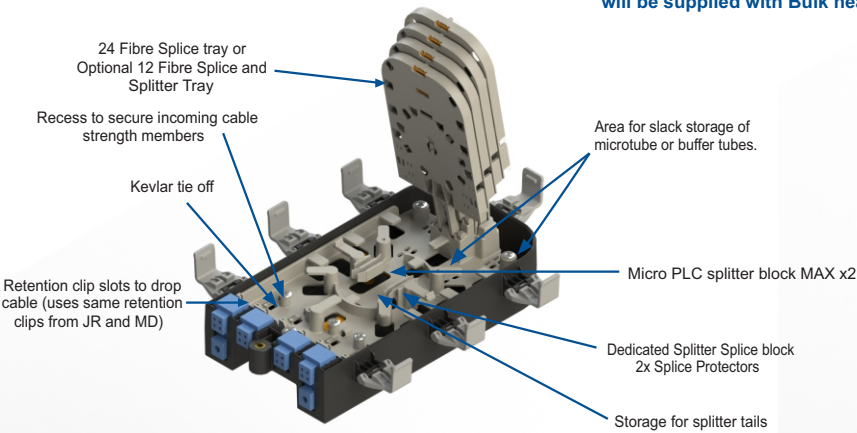
(Section 1) (Section 2) (Section 3) (Section 4)

Must be in alphabetical order

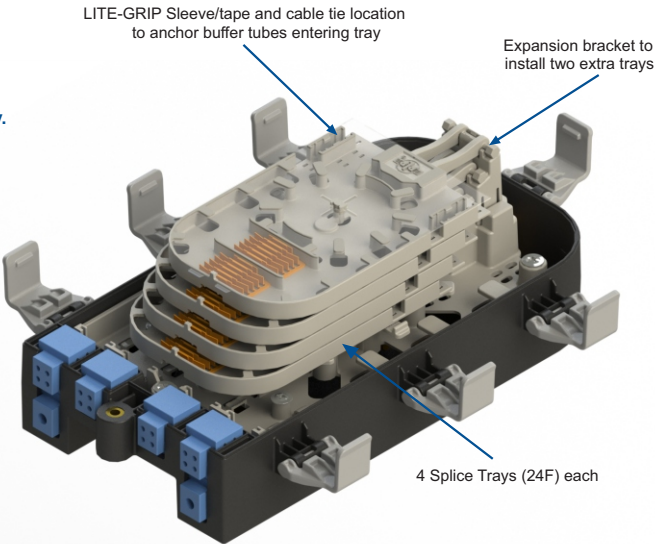
Section 1		Section 2		Section 3		Section 4	
Fibre Count		Grommet Selection Select 6	Cable Diameter Range In	Adapter Type		Accessories	
24		A	SOLID / PLUG 80812437	S	Splice only	N	None
	1 Splice Tray	B	.170 - .220 (4.3 - 5.6 MM) ROUND CABLES 80812219	1	 0* to 8	1	Splice Protector
48		C	.220 - .270 (5.6 - 6.9 MM) ROUND CABLES 80812433	2	 0* to 8	2	Pole/ Wall MNT BKT Only
	2 Splice Trays	D	.270 - .320 (6.9 - 8.1 MM) ROUND CABLES 80812220	3	 0* to 8	3	External Cable Fixation BKT
72		E	.320 - .370 (8.1 - 9.4 MM) ROUND CABLES 80812434	4	 0* to 8	4	PLC-Splitter Block (80812439)
	3 Splice Trays	F	.370 - .420 (9.4 - 10.7 MM) ROUND CABLES 80812172	5	 0* to 4	5	Aerial Pole MNT BKT with 2x Coach screws
96		G	.420 - .470 (10.7 - 11.9 MM) ROUND CABLES 80812435	6	 0* to 4	6	Aerial Pole MNT BKT with 1x MPS Strap ASSY.
	4 Splice Trays	H	.470 - .550 (11.9 - 14.0 MM) ROUND CABLES 80812436	7	 0* to 4	7	Wall MNT BKT with 2x Wall Plugs and Screws
		J	.156 - .170 (4.0 - 4.3 MM) ROUND DROP CABLES 80812251	8	 0* to 4		
		K	.093 - .125 (2.4 - 3.2 MM) ROUND DROP CABLES 80812400				
		1	.2x 2.4 - 3.2 MM Round Drop Cables 1x 6.9 - 8.1 MM Round Cable TLG-1				

*Pigtails and PLC Splitters available on special request.

*Note: If zero is selected, Closure will be supplied with Bulk head only.



Fibre and splitter storage tray



96F Splice Only Configuration

COYOTE[®] STP-L Specifications

Specifications

Features	Description
Splice Capacity (Maximum)	96
Splice Tray Capacity (Maximum)	4
Express Capacity (Maximum) – Microtube, Blown Fiber, Buffer Tube	96, 72, 48
Grommet Quantity – Express Chamber, Splice and Drop Chamber	2(Bottom) and 4 (Top)
Cable Diameters	0.093" – 0.55" (2.4 – 14 mm)
Configuration	Butt
Application	Aerial (ADSS); Underground
Ingress Protection	IP68
Size ¹	7.8" W x 11.8" L x 4.4" H (198 x 300 x 112 mm) [1 Deep Cover]
Pallet Quantity	72

¹Outermost part of the assembly



PREFORMED
LINE PRODUCTS

Preformed Line Products
180 Ohrtmann Road
Willowton, Pietermaritzburg

Mailing Address:
P.O. Box 4015
Willowton Pietermaritzburg, 3200

Telephone: +27 (0) 33 397 5800
Fax: +27 (0) 333877094
Web Site: www.preformed.com/za/
E-mail: sales@preformedsa.co.za
© 2021 Preformed Line Products
Printed in SOUTH AFRICA
CO-CA-08-15-1
09-17-300