



PREFORMED LINE PRODUCTS

The connection you can count on.

OCTOBER 2014

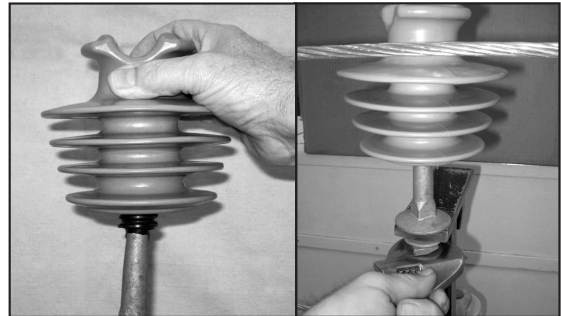
Polymer Insulators: Tie Top

Be sure to read and completely understand this procedure before applying product. Be sure to select the proper PREFORMED™ product before application.

TIE TOP POLYMER INSULATORS



Step #1 Install the insulator on the pin and hand tighten until the mastic material provides resistance to the installation rotation. If the top groove is not in line with the conductor, the insulator can be turned up to an additional one half turn for the purpose of alignment. If it is not possible to turn the insulator, loosen the nut on the pin, align the insulator, and retighten. Make sure the insulator remains tight on the pin and in contact with the mastic in the insulator.



SAFETY CONSIDERATIONS

This application procedure is not intended to supersede any company construction or safety standards. This procedure is offered only to illustrate safe application for the individual. **FAILURE TO FOLLOW THESE PROCEDURES MAY RESULT IN PERSONAL INJURY OR DEATH.**

Do not modify this product under any circumstances.

This product is intended for use by trained technicians only. **This product should not be used by anyone who is not familiar with, and not trained to use it.**

When working in the area of energized lines, extra care should be taken to prevent accidental electrical contact.

For proper performance and personal safety, be sure to select the proper size PREFORMED product before application.

PREFORMED products are precision devices. To insure proper performance, they should be stored in cartons under cover and handled carefully.



PREFORMED LINE PRODUCTS

P.O. Box 91129, Cleveland, Ohio 44101 • 440.461.5200 • www.preformed.com • e-mail: inquiries@preformed.com

SP3245