



PREFORMED LINE PRODUCTS
The connection you can count on.


POLYMER INSULATORS Tie Top—Pin-Type

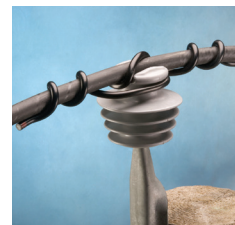
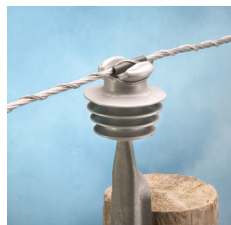


 COMMUNICATIONS

 ENERGY

 SPECIAL INDUSTRIES

 SOLAR



PLP Distribution Products

POLYMER INSULATORS TIE TOP CONSTRUCTION

Description

The PLP Polymer Insulators are ideal for use in:

- Overhead distribution line construction - bare or covered conductors
 - Spacer Cable
 - Tree wire
- Available for 1" or 1-3/8" pin construction

These insulators are manufactured from a proprietary high-density polyethylene-based compound having a dielectric constant that is similar to (and compatible with) polyethylene covered overhead conductor.

The insulators are designed to meet the appropriate dimensional, electrical and mechanical requirements of the applicable ANSI C29.5 and C29.6 insulator standards. A neutral spool insulator is available and meets the ANSI C29.3 Class 53-2 standard and can be used in any application calling for this insulator standard.

Features

- Tie top designs are perfect for use with all PLP ties
- Matched dielectric properties with Jacketed Conductor
- Superior moisture and contamination shedding
- UV stabilized material
- High impact resistance
- Lightweight design
- Head dimensions - ANSI 29.5 & 29.6 compliant
- Dramatically reduces abrasion
- Ideal for jumpers and stinger wires
- 100% Recyclable



Spool Insulator



PREFORMED
LINE PRODUCTS

World Headquarters
660 Beta Drive
Cleveland, Ohio 44143

Mailing Address:
P.O. Box 91129
Cleveland, Ohio 44101

Telephone: 440.461.5200
Fax: 440.442.8816
Web Site: www.preformed.com
E-mail: inquiries@preformed.com

© 2016 Preformed Line Products
Printed in U.S.A.
EN-SS-1032-2
04.16.IH

Polymer Insulators Tie Top – Pin-Type			
PLP Catalog Number	ANSI Class*	Description	Mounting Pin Application
Neutral Applications			
IP-53-2**	53-2	A-Neck - 1-3/4" Diameter	5/8"
15kV Applications			
IP-15-C**	55-3	C Neck	1"
IP-15-F**	55-4	F Neck	1"
25kV Applications			
IP-25-F1	55-5	F Neck	1"
IP-25-F2	55-5†		1-3/8"
IP-25-J1	56-1†	J Neck	1"
IP-25-J2**	56-1		1-3/8"
35kV Applications			
IP-35-F1	55-6†	F Neck	1"
IP-35-F2	55-7†		1-3/8"
IP-35-J1	55-6	J Neck	1"
IP-35-J2	55-7		1-3/8"

* Nominal ANSI C29.5 or C29.6 Class designation

** RUS Accepted

† Meets the electrical requirements of the ANSI Class designation, but there are differences in the physical characteristics.