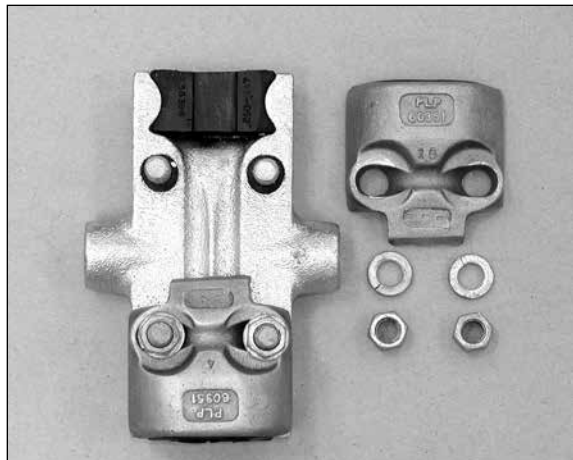


CUSHION-GRIP® T2 Support for Twisted Pair Conductor

NOMENCLATURE



Thermal Rating (Continuous)
Standard 125°C
HT Version 210°C

CUSHION-GRIP T2 Support Keepers: High-strength Aluminum Alloy Casting

CUSHION-GRIP T2 Support Body: Galvanized Ductal Iron Casting

U-bolts: Galvanized Steel

Nuts and Lock Washers: Galvanized Steel

GENERAL RECOMMENDATIONS

The CUSHION-GRIP T2 Support is intended for use on aluminum based twisted pair conductors. (T2 and VR Conductors) The clamp is designed to reduce the static and dynamic stresses at the support point, so the conductor is protected against the effects of oscillations. The conductor is cushioned by field proven, captive elastomer inserts, which guard against abrasion, wear and fatigue.

The level of protection provided by the CUSHION-GRIP T2 Support is comparable to a bolted clamp over armor rods. This equates to a reduction in bending strain as high as 50% as compared to bare conductor in a bolted clamp. This reduction in bending strain can be directly related to an increase in overall conductor life. The CUSHION-GRIP T2 Support is designed for up to 125°C continuous conductor operation (150°C two hour emergency).

The Standard CUSHION-GRIP T2 support is designed for up to 125°C continuous conductor operation (150°C two hour emergency) and the CCT2-HT version can be used for applications with continuous conductor operating temperatures up to 210°C (240°C two hour emergency).

Features and Benefits:

- The CUSHION-GRIP T2 Support is shipped assembled. U-bolts are captivated in the base.
- Labor savings – to install the CUSHION-GRIP T2 Support simply install the base, place the keepers over the conductor, and install the washers, nuts then tighten.
- Integral Cushions – minimize conductor bending stresses at critical entry locations.

Mechanical Strength:

The CUSHION-GRIP T2 Support will withstand a pulloff load from the trunnion pins of the insulator cap of 5,000 lbs., applied in any direction. This includes the vertical up direction (uplift).

Slip load:

When initially installed the CUSHION-GRIP T2 Support has a slip load that ranges between 10% to 15% of the conductor's rated breaking strength (RBS).

Line Angle:

The maximum recommended line angle for a CUSHION-GRIP T2 Support is 30° as a single support and 60° in a double support configuration.



CUSHION-GRIP® T2 Support for Twisted Pair Conductor

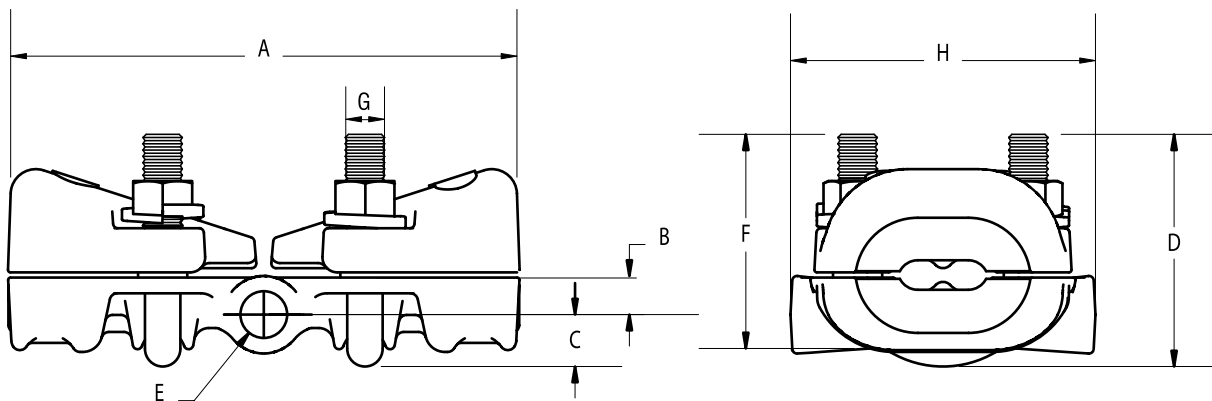
ORDERING INFORMATION

Catalog Number	Conductor Range Inches (mm)		Nominal Conductor Sizes Max	Weight/Unit Pounds (Kg)	Standard Carton Quantity
	Min	Max			
CCT2-0103	2 x 0.250 (2 x 6.4)	2 x 0.447 (2 x 11.4)	2 x #4 to 2 x 2/0	2.85 (1.3)	12
CCT2-0104	2 x 0.477 (2 x 11.4)	2 x 0.642 (2 x 16.3)	2 x 2/0 to 2 x 266.8 kcmil	4.75 (2.2)	12
CCT2-0106	2 x 0.721 (2 x 18.3)	2 x .858 (2 x 21.8)	2 x 336 to 2 x 477 kcmil	7.30 (3.3)	12
CCT2-0105	2 x 0.859 (2 x 21.8)	2 x 1.108 (2 x 28.1)	2 x 477 to 2 x 795 kcmil	7.60 (3.5)	12



NOTE: For high temperature (HT) version add HT to the catalog number (Example - CCT2-0106HT).

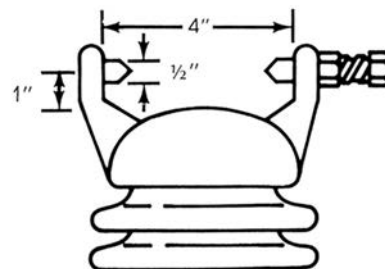
DIMENSIONAL INFORMATION



Catalog Number	Dimensions Inches							
	A	B	C	D	E	F	G	H
CCT2-0103	5-1/2	3/8	1/2	2-3/8	0.595	2-1/4	9/16	3-7/8
CCT2-0104	6-1/2	1/2	3/4	3	0.595	2-3/4	3/4	3-7/8
CCT2-0106	7-1/4	7/8	3/4	3-5/8	0.595	3-1/2	1/2	3-7/8
CCT2-0105	7-1/2	7/8	1	3-5/8	0.595	3-1/2	3/4	3-7/8

CLAMP FOR TRUNNION

To ensure proper fit and service life, it is recommended that only line post insulators with clamp top trunnion caps that conform to ANSI standards be used. See the illustration on the right for nominal cap dimensions that illustrate ANSI standards that have been established outlining the permissible dimensions and tolerances for trunnion caps. Consult the insulator manufacturer when in doubt about insulator standards.



The above dimensions are approximates for design information. Consult ANSI specification C29.7-1977 for exact dimensions.