



String Hardware Assemblies

Preformed Line Products String Assemblies include a full selection of tower hardware for tangent suspension, angle, and dead-end assemblies. The assemblies are organized by rated voltage values, number of conductors, general assembly type, and vertical strength of the associated insulators.

Each component in the standard assemblies shown was selected with respect to the fit with all other components in mind. All parts have been carefully selected to ensure that they operate as a complete system.

All items will arrive in one weather-resistant crate, so all string parts will be delivered at the same time. String Assemblies are packaged and marked by string or tower for easy field identification, to minimize handling and expedite string installation. The number of assemblies per crate can be modified based on customer requirements.

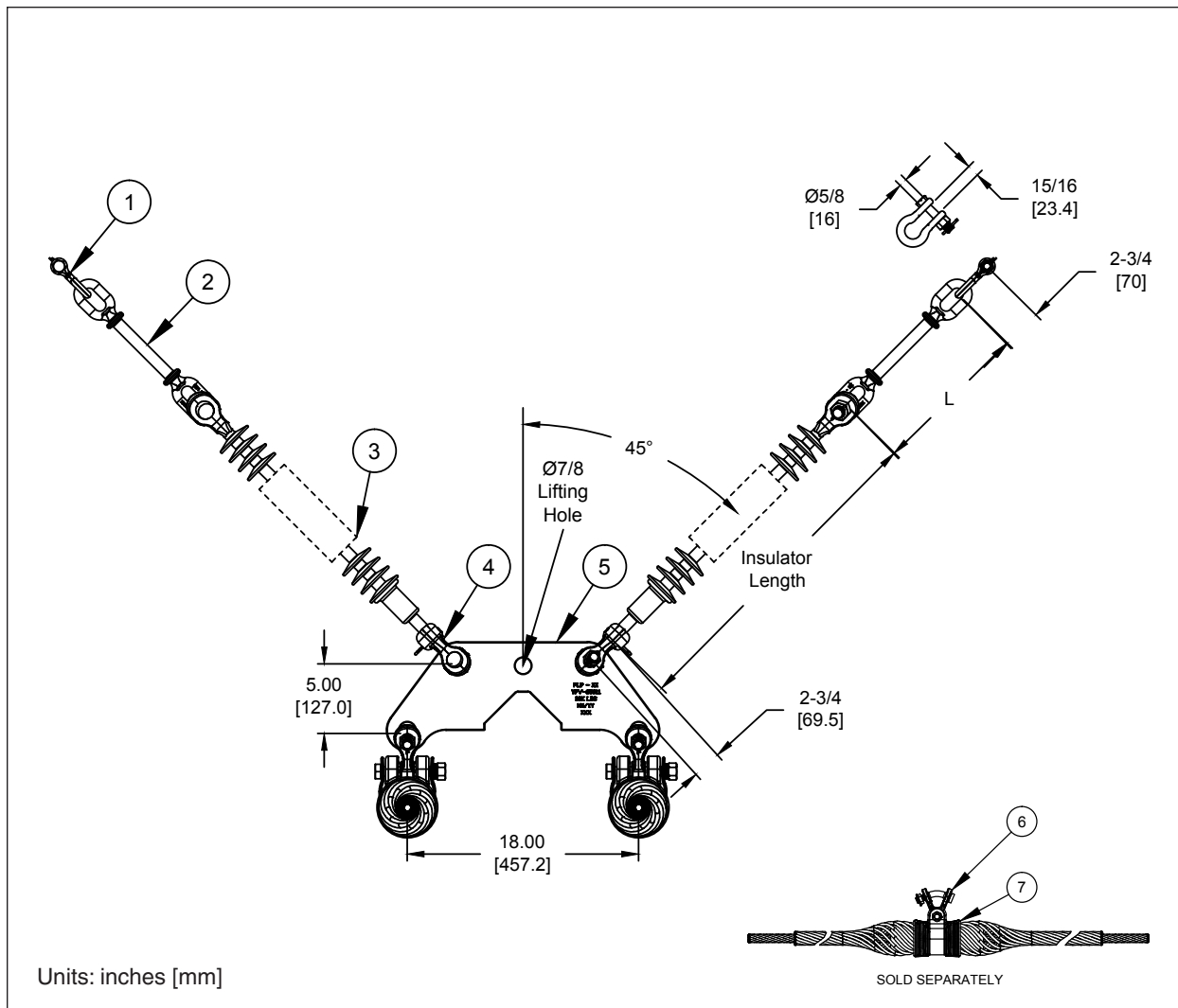
The catalog numbers provided represent commonly used string configurations. Please contact your local Preformed Line Products sales agency if you are interested in design modifications, or creation of an assembly to your specification.

NOTES

1. All galvanizing has been performed per ASTM A153.
2. Parts with length "L" are variable length and dependent on the string design and line parameters.
3. Suspension Clamp and associated attachment hardware sold separately. See the Suspension and Support section of the Transmission Catalog for AGS / CGS / Bolted Clamp and Armor Rods options.
4. Compression Dead-end Assemblies are sold separately. Please see the Compression Dead-end section of the Transmission Catalog for ACSR / ACSS / ACCC configurations.
5. Corona rings are packaged separately.
6. Please see the individual component drawings for detailed dimensions and material properties of parts.

Transmission Line String Hardware

V-String Assembly – Tangent Suspension Twin-Bundle Conductor, 25K Catalog Number S-VH-22-25



ALL DIMENSIONS ARE APPROXIMATE AND MAY VARY PER FACTORY TOLERANCES, CONTACT PLP FOR MORE INFORMATION.

Bill of Materials						
SYM	Part Number	Description	QTY	Material	Weight (Ea) Lbs. (Kg)	UBS
1	AS-30BNK	Anchor Shackle	2	Galv. Steel	1.1 (0.5)	30,000
2	EEL-30-L	Eye-Eye Link ("L")	2	Galv. Steel	Variable	30,000
3	Supplied By Other	Insulator String	2	–	–	–
4	SYC-30	Socket Y-Clevis	2	Ductile Iron	2.5 (1.1)	30,000
5	YPD-65611	Yoke Plate, V-String Twin	1	Ductile Iron	22.7 (10.3)	30,000
6	See Note 3 on page 8-2	Attachment Hardware	2	Ductile Iron	–	–
7	See Note 3 on page 8-2	Suspension Hardware	2	Aluminum	–	–