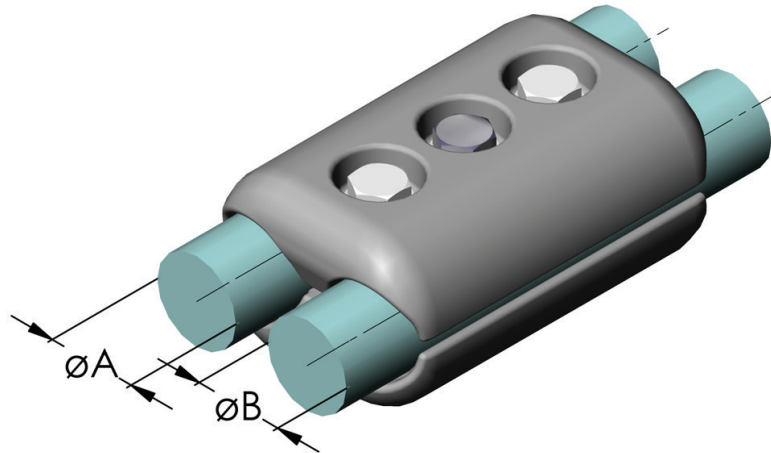


# Al-Parallel Groove Connector for Single Conductor

2 Conductors run

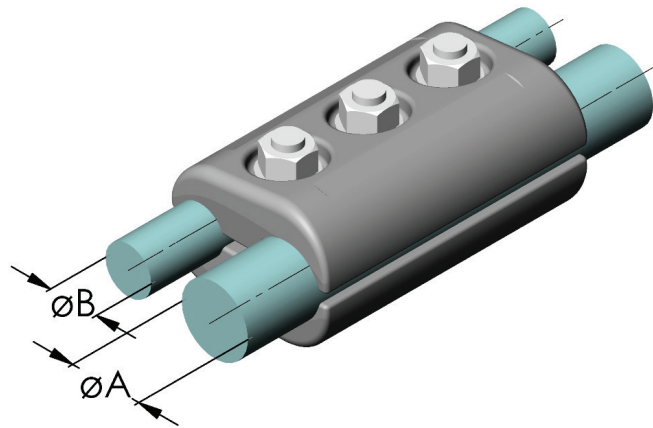


Catalog Number	Voltage	ØA *	ØB *	Screws
P11K-028	550 kV	22,0-33,0	22,0-33,0	3
P11K-211	245 kV	19,1-21,1	19,1-21,1	3
P11K-225	245 kV	12,6-22,5	12,6-22,5	3
P11K-226	245 kV	12,6-22,5	12,6-22,5	3
P11K-234	245 kV	21,2-23,4	21,2-23,4	3
P11K-257	245 kV	23,5-25,7	23,5-25,7	3
P11K-299	245 kV	28,0-29,9	28,0-29,9	3
P11K-319	245 kV	30,0-31,9	30,0-31,9	3
P11K-326	420 kV	22,5-32,6	22,5-32,6	3
P11K-328	420 kV	22,5-32,6	22,5-32,6	3
P11K-329	420 kV	22,5-32,6	22,5-32,6	3
P11K-330	420 kV	22,0-33,0	22,0-33,0	3
P11K-340	245 kV	32,0-34,0	32,0-34,0	3
P11K-360	245 kV	35,0-36,0	35,0-36,0	3
P11K-365	420 kV	36,0-37,0	36,0-37,0	3
P11K-368	420 kV	35,3-36,8	35,3-36,8	3
P11K-392	420 kV	31,2-39,2	31,2-39,2	3
P11K-395	420 kV	37,1-39,2	37,1-39,2	5
P11K-411	550 kV	30,0-44,0	30,0-44,0	3
P11K-413	420 kV	40,0-42,0	40,0-42,0	5
P11K-432	245 kV	39,2-43,2	39,2-43,2	3
P11K-446	420 kV	46.3	46.3	3
P11K-447	420 kV	30,0-44,0	30,0-44,0	3
P11K-548	550 kV	46,3-54,8	46,3-54,8	3

\*Dimensions are in millimeters. Please specify exact diameter in case of order.

# Al-Parallel Groove Connector for Single Conductor

2 Conductors run (reduction of Ø)



Catalog Number	Voltage	ØA *	ØB *	Screws
P11K-026	245 kV	22,5-32,6	12,6-22,5	3
P11K-029	245 kV	14,5-20,8	13,0-16,5	3
P11K-030	245 kV	20,9-33,2	13,0-20,2	3
P11K-039	245 kV	39,2	30,7-32,0	4
P11K-040	245 kV	38,6-43,4	22,2-29,1	3
P11K-317	420 kV	22,5-34,6	22,5-36,7	4
P11K-327	420 kV	27,37	27,37-36,67	3
P11K-396	420 kV	35,0-39,2	22,0-39,2	5

\*Dimensions are in millimeters. Please specify exact diameter in case of order.



# Al-Parallel Groove Connector for Single Conductor

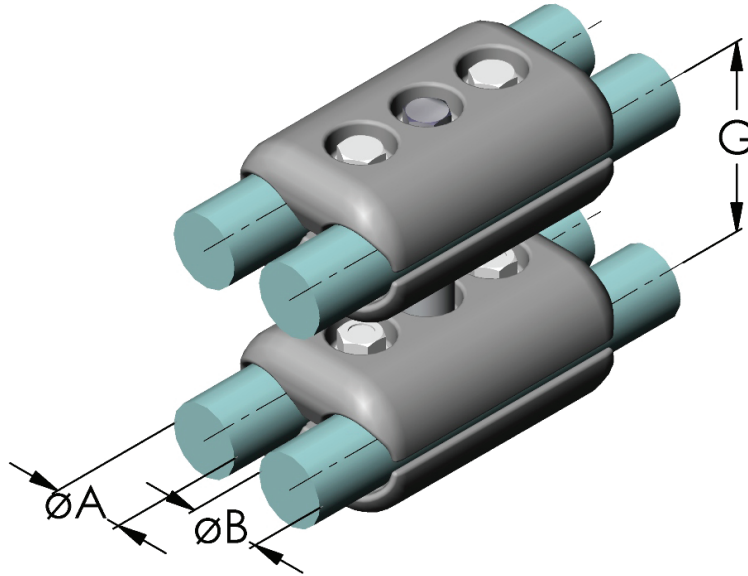
For conductor run/end



Catalog Number	Voltage	$\varnothing A$ *	$\varnothing B$ *	Screws
P11K-037	550 kV	37,0-39,2	37,0-39,2	3
P11K-046	550 kV	46,0-46,3	46,0-46,3	3
P11K-412	550 kV	30,0-44,0	30,0-44,0	5

\*Dimensions are in millimeters. Please specify exact diameter in case of order.

# Al-Duplex parallel groove connector



Catalog Number	Voltage	ØA *	ØB *	Bundle-spacing G
P22K-033	245 kV	30,0-31,9	30,0-31,9	100
P22K-365	420 kV	36,0-37,0	36,0-37,0	200

\*Dimensions are in millimeters. Please specify exact diameter in case of order.