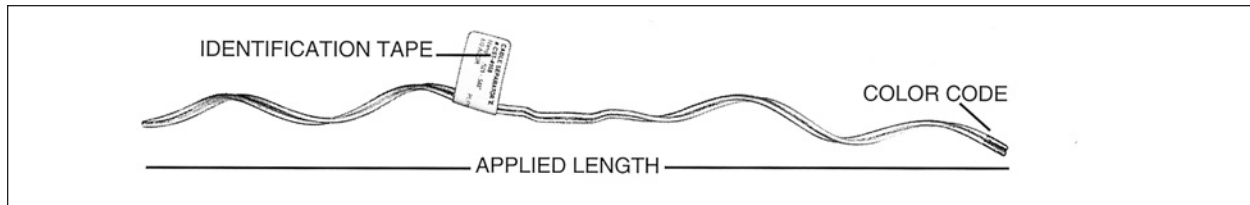




Cable Separator Tie

FOR USE ON BARE OR PLASTIC JACKETED CONDUCTORS
AND TRI-PLEX OR QUADRAPLEX
CABLE SEPARATORS



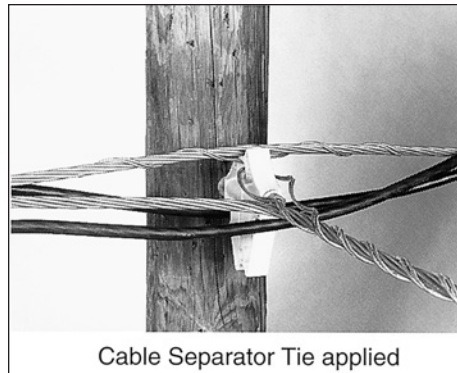
NOMENCLATURE

Material: Aluminized steel.

Color Code: Identifies proper conductor size, corresponding to tabular information appearing in this section.

Identification Tape: Lists catalog numbers and nominal conductor sizes.

Applied Length: Describes length of tie after installation, plus assists in product identification.



Cable Separator Tie applied

GENERAL RECOMMENDATIONS

The Cable Separator Tie is intended for use on aluminum based conductors with diameters from .245" to .588". Each Cable Separator Tie covers a range of conductor diameters as outlined in the following table.

Cable Separator Ties are designed to fit Preformed™ Cable Separators (except 5060100 series). However, Cable Separator Ties can also be used with cable separators from other manufacturers. Consult Preformed Line Products Company for recommendations.

To ensure proper fit and service life of the Cable Separator Tie, it is recommended only Cable Separator Ties with uniform dimensions be used. When in doubt, consult PLP® for general guidelines.

The Cable Separator Tie is designed to provide superior mechanical strength and resiliency during conductor motion and cyclic loading conditions.

The Cable Separator Tie is designed to outperform hand tie devices during conductor motion activity, such as aeolian vibration and galloping. However, on some lines the use of dampers may be necessary to prevent damage. Utilities that have experienced conductor motion or expect to, should consider adding dampers. Consult PLP for general guidelines and advice concerning conductor motion and dampers.

INSTALLATION GUIDELINES

Line Angles – General Guidelines: Cable Separator Tie will normally accept small angles up to 10°, but in all cases the conductor should rest in the preferred insulator groove, independently of the tie, so the tie is not required to force the conductor to remain in that groove. The largest practical angle a tie can accommodate depends upon limiting factors such as conductor size, tension, span lengths, sag angles, insulator style and orientation, etc. Consult PLP for further guidance on line angle issues.

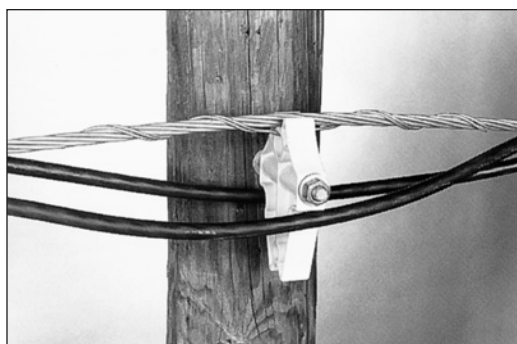
Tapping: Taps should not be made directly over the legs or loop of the Cable Separator Tie.

Conductor Compatibility: Cable Separator Ties should be used only on the size, type, and lay direction for which they are designed. When using conductors not mentioned in this catalog section, consult PLP.

Cable Separator Tie

For use on:

ACAR, All-Aluminum
ACSR, Aluminum Alloy
AWAC®, Compacted ACSR
Plastic Jacketed Conductor



Catalog Number	Diameter Range (Inches)		Nominal Conductor Size		Units Per Carton	Wt./ Lbs.	Applied Length (Inches)	Color Code
	Min.	Max.	Bare Conductor	Plastic Jacket Conductor				
CST-4102	.245	.277	#4 (6/1, 7/1) #4 (7W Alum. Alloy)	#6 (7W, 2/64s) #6 (solid 3/64s) #6 (6/1, 2/64s)	100	9	12	Orange
CST-4104	.316	.357	#2 (6/1, 7/1) #2 (7W Alum. Alloy) #1 (6/1)	#4 (7W, 3/64s) #4 (6/1, 7/1, 3/64s)	100	10	14	Red
CST-4105	.358	.405	1/0 (7W All Alum.) 1/0 (6/1) 1/0 (7W Alum Alloy)	#3 (7W, 4/64s) #2 (7W, 3/64s) #4 (7W, 5/64s)	100	12	15	Yellow
CST-4106	.406	.459	2/0 (7W All Alum.) 2/0 (6/1) 2/0 (7W Alum. Alloy)	#2 (6/1, 3/64s) #2 (7W, 4/64s) #1 (7W, 4/64s)	100	14	17	Blue
CST-4107	.460	.520	3/0 (7W All Alum.) 3/0 (6/1) 3/0 (7W Alum. Alloy)	#4 (7W, 8/64s) #1 (6/1, 4/64s) #1 (7W-19W, 5/64s) 1/0 (7W, 4/64s)	100	14	18	Orange
CST-4108	.521	.588	4/0 (7W All Alum.) 4/0 (6/1) 4/0 (7W Alum. Alloy)	1/0 (6/1, 4/64s) 1/0 (7W, 5/64s) 2/0 (7W, 64s) 1/0 (6/1, 5/64s)	100	18	19	Red

EXPLANATORY NOTES:

- (1.) "Diameter Range" indicates the size of conductors that utilize the same tie. To obtain outside diameters of many conductors falling within the diameter range listed, consult the conductor charts in the General Information Section.
- (2.) "Nominal Conductor Size" indicates only a few conductors, that have outside diameters within the ranges listed. Consult the General Information Section for those not shown.
- (3.) AWAC is a registered trademark of the Copperweld Co.