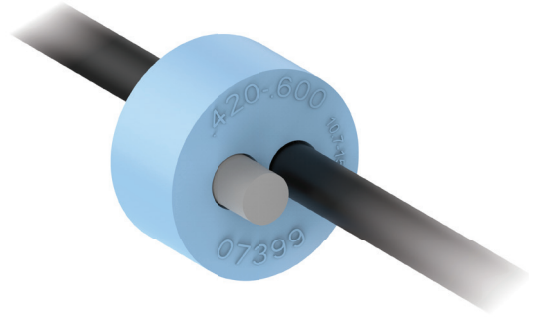




COYOTE® SILICONE GROMMET KIT



INSTALLATION INSTRUCTIONS



IMPORTANT SAFETY INFORMATION

READ AND COMPLETELY UNDERSTAND ALL INSTRUCTIONS BEFORE INSTALLING PRODUCT. FAILURE TO FOLLOW THESE INSTRUCTIONS MAY RESULT IN PERSONAL INJURY OR DEATH.

This product is intended for use by trained technicians only. This product should not be used by anyone who is not familiar with and not trained to use it. When working in the area of energized lines, extra care should be taken to prevent accidental electrical contact. Be sure to wear proper safety equipment per your company protocol. These instructions are not intended to supersede any company construction or safety standards. These instructions are offered only to illustrate safe installation for the individual. PLP products are intended for the specified application only. Do not modify this product under any circumstances. Do not reuse or reinstall any PLP product unless that capability is expressly indicated in the product's Installation Instructions. For proper performance and personal safety, be sure to select the proper PLP product before installation. PLP products are precision devices. To ensure proper performance, they should be stored in cartons under cover and handled carefully.

PACKAGE COMPONENTS



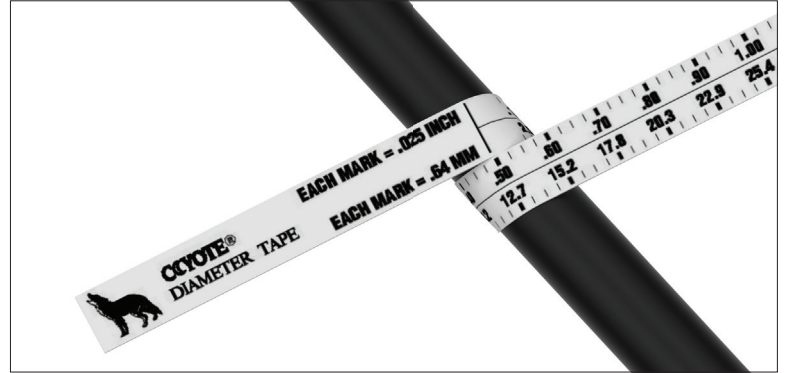
1. End Plate Grommet
2. Plugs (one provided for each multi-hole grommet entry)
3. Measure Tape
4. Silicone Lubricant (1)

COYOTE® SILICONE GROMMET KITS

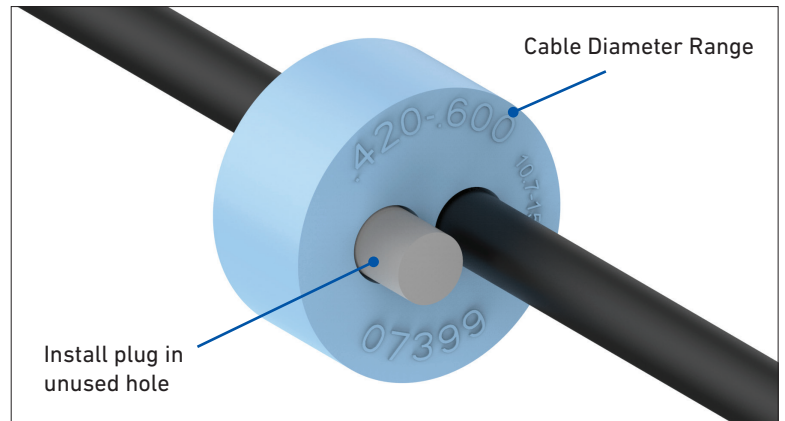
Catalog Number	Cable Range in (mm)	Description	Image	Slitting Location
8003691	0.40 - 0.60 (10.2 - 15.2)	1-entry grommet		
8003692	0.60 - 0.85 (15.2 - 21.6)	1-entry grommet		
8003693	0.85 - 1.0 (21.6 - 25.4)	1-entry grommet		
8003694	1.0 - 1.25 (25.4 - 31.7)	1-entry grommet		
8003663	0.42 - 0.60 (10.7 - 15.2)	2-entry grommet		
8004122	RPX Only	2-entry grommet		
8004065	0.250 - 0.312 (6.4 - 7.9)	4-entry grommet		
8003664	0.30 - 0.43 (7.6 - 10.9)	4-entry grommet		
8003990	0.50 - 0.60 (12.7 - 15.2) 0.125 - 0.25 (3.2 - 6.4) and flat drop	4-entry grommet		
8003665	0.125 - 0.25 (3.2 - 6.4) and flat drop	6-entry grommet		
8003676	0.42 - 0.60 (10.7 - 15.2) 0.125 - 0.25 (3.2 - 6.4) and flat drop	7-entry grommet		
8004094	0.093 - 0.125 (2.4 - 3.2)	8-entry grommet		
8003677	0.125 - 0.25 (3.2 - 6.4) and flat drop	8-entry grommet		N/A

NOTE: Grommet Kit contains (1) Grommet, (1) Cable Measure Tape, (1) Silicone Lubricant Pack, and (1) Set of Plugs where applicable

- 1 Measure the cable to determine the diameter and hole location to use in the grommet.



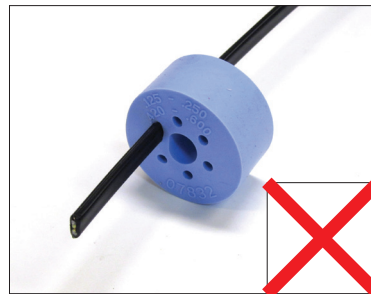
- 2 If using cut cable, insert the cable through the grommet. If your application requires express cables, **see Step 4 for grommet slitting procedure.**



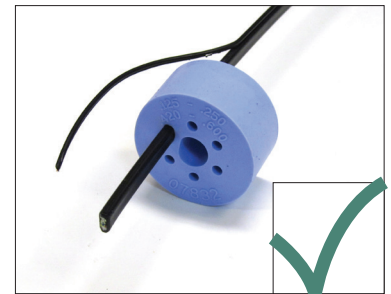
INSTALLING FIGURE 8 STYLE CABLES AND CABLES WITH TRACER WIRES

- 3 Remove the tracer wire or ground wire from the portion of the cable that will be positioned in the grommet and insert the cable into the grommet. Remove any burrs left on the cable caused by separating the tracer wire from the sheath.

Cable with Tracer Wire



Incorrect Installation



Correct Installation

Figure 8 Style Cable



Incorrect Installation



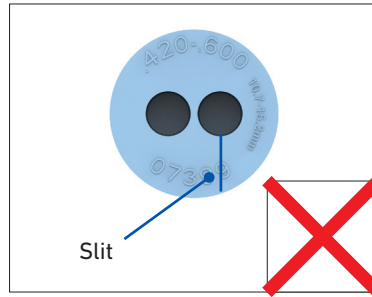
Correct Installation

GROMMET SLITTING

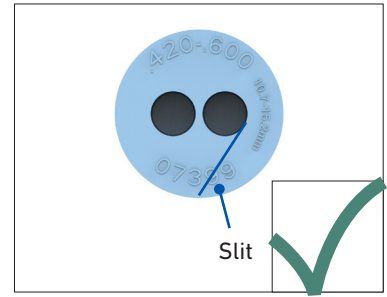
4

If slitting is required, lay the grommet on a stable flat surface.

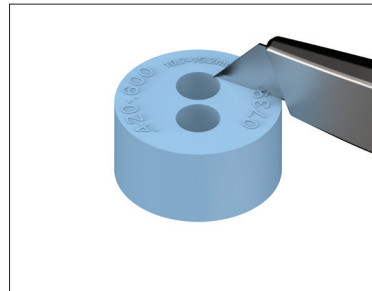
1. **Consult the grommet chart on page 2 for slitting locations of all grommets**
2. Use a pen to sketch slitting lines on top surface of grommet prior to cutting
3. Position the utility knife with the cutting edge against the top surface and cut through the grommet.



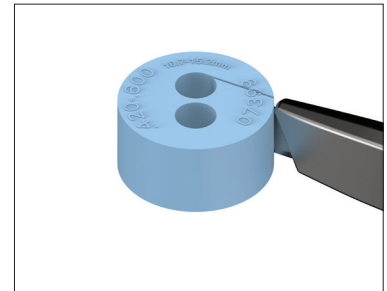
Incorrect Slitting Angle



Correct Slitting Angle



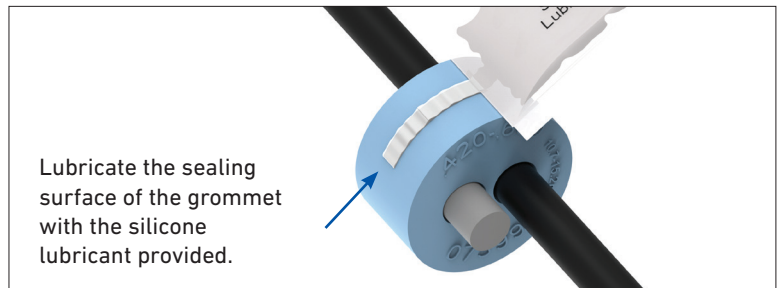
Blade Position Start



Blade Position Finish

5

Lubricate the outer surface of each grommet. Spread the lubricant evenly around the outer surface.



Lubricate the sealing surface of the grommet with the silicone lubricant provided.

FUTURE ENTRY

6

Loosen bolts on End Plate Cap. Remove the plug from the grommet entry hole selected for the future cable entry. Carefully pierce the thin layer of material on the outside surface of the grommet and push the cable through the grommet. Retighten bolts on End Plate Cap.