



Palms/Flags



BBAP

Busbar Aluminium Palm (Inline)

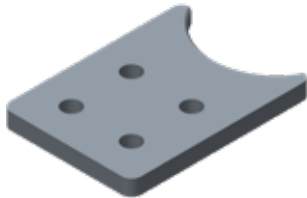
Palms can be welded to busbars or end caps and current ratings are matched to the rating of the Busbars. Choose palm types from the selection below. Please contact PLP for various other sizes and styles.

Part Number	Palm Type
BBAP-AS#	AS#

Part Number System

BBAP	Busbars Aluminium Palm Inline
AS#	Palm Type E.g. AS1, AS2 etc...

Example: BBAP-AS5



BBAPT

Busbar Aluminium Palm (Transverse)

Part Number	Busbar Outer Ø (mm)	Palm Type
BBAPT-080-AS#	80	AS#
BBAPT-100-AS#	100	AS#
BBAPT-125-AS#	125	AS#
BBAPT-141-AS#	141	AS#
BBAPT-160-AS#	160	AS#

Part Number System

BBAPT	Busbar Aluminium Palm Transverse
080	Busbar Outer Diameter
AS#	Palm Type E.g. AS1, AS2 etc...

Example: BBAPT-080-AS5



BBECP

Busbar End Cap Palm

Part Number	Busbar Outer Ø (mm)	Palm Type
BBECP-080-AS#	80	AS#
BBECP-100-AS#	100	AS#
BBECP-125-AS#	125	AS#
BBECP-141-AS#	141	AS#
BBECP-160-AS#	160	AS#

Part Number System

BBECP	Busbar End Cap Palm
080	Busbar Outer Diameter
AS#	Palm Type E.g. AS1, AS2 etc...

Example: BBECP-080-AS5

Palms/Flags



BBEP

Busbar End Palm (Capped)

Part Number	Busbar Outer Ø (mm)	Palm Type
BBEP-080-AS#	80	AS#
BBEP-100-AS#	100	AS#
BBEP-125-AS#	125	AS#
BBEP-141-AS#	141	AS#
BBEP-160-AS#	160	AS#

Part Number System

BBECP	Busbar End Palm Capped
080	Busbar Outer Diameter
AS#	Palm Type E.g. AS1, AS2 etc...

Example: BBEC-080-AS5



BBEPL

Busbar End Palm (L-Type)

Can be used as an end cap palm and/or fixed support.

Part Number	Busbar Outer Ø (mm)	Palm Type
BBEPL-080-AS#	80	AS#
BBEPL-100-AS#	100	AS#
BBEPL-125-AS#	125	AS#
BBEPL-141-AS#	141	AS#
BBEPL-160-AS#	160	AS#

Part Number System

BBEPL	Busbar End Palm (L Type)
080	Busbar Outer Diameter
AS#	Palm Type E.g. AS1, AS2 etc...

Example: BBEPL-080-AS5