



Conductor Terminations

CTA

Aluminium Compression Terminal

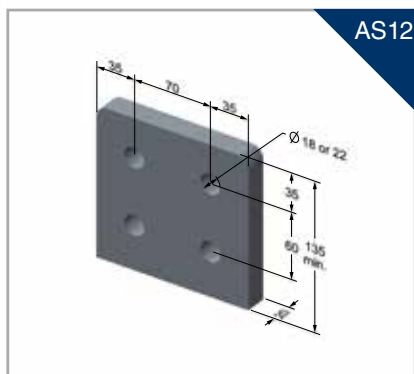
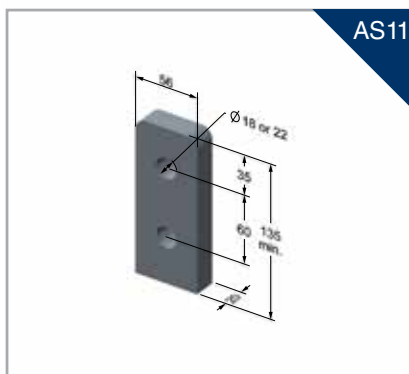
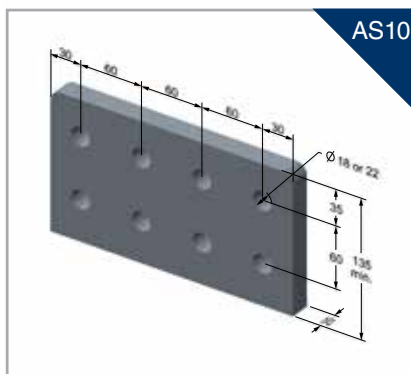
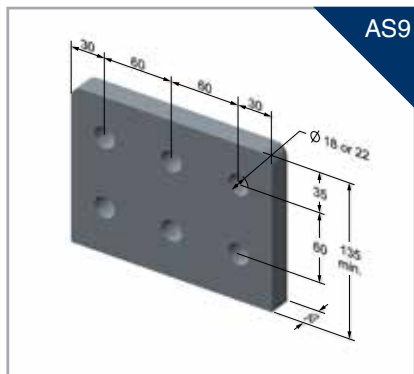
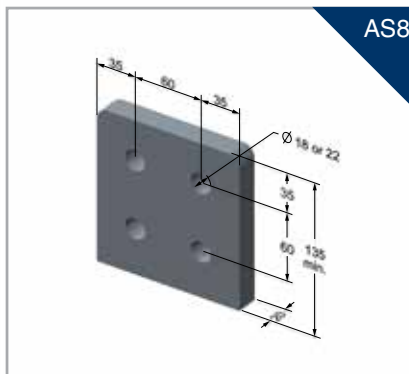
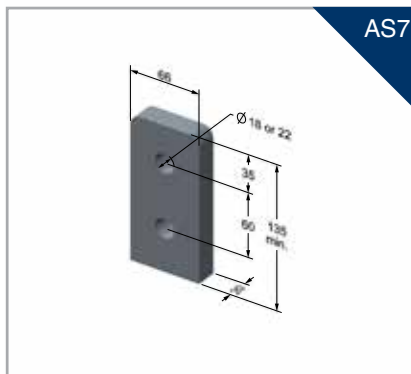
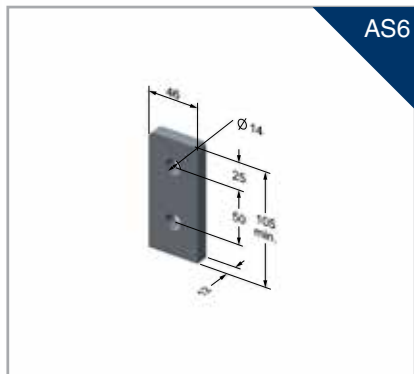
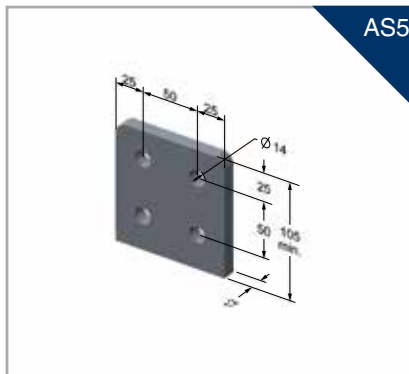
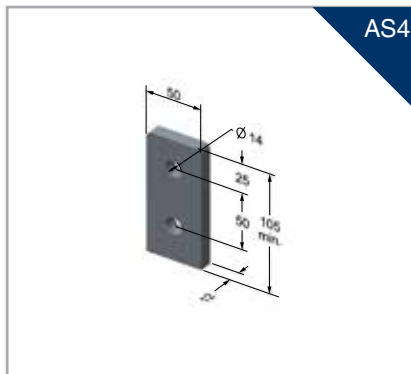
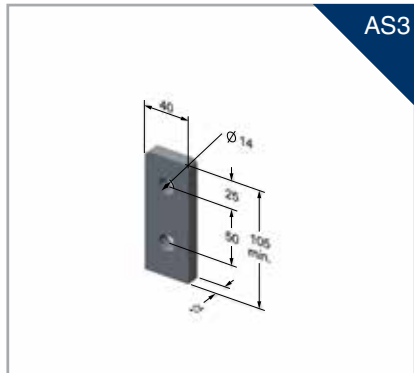
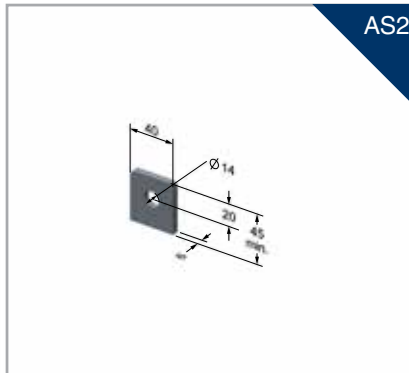
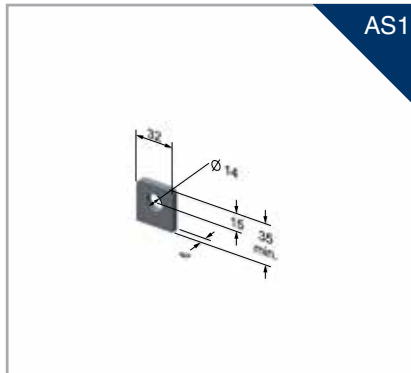
Please fill in the following information for PLP to manufacture compression terminals to suit your requirement. Copy and fax or scan and email your completed catalogue page to us.

Fax: (02) 8805 0090 **Email:** plp-salesupport@preformed.com.au

Conductor Stranding

No.

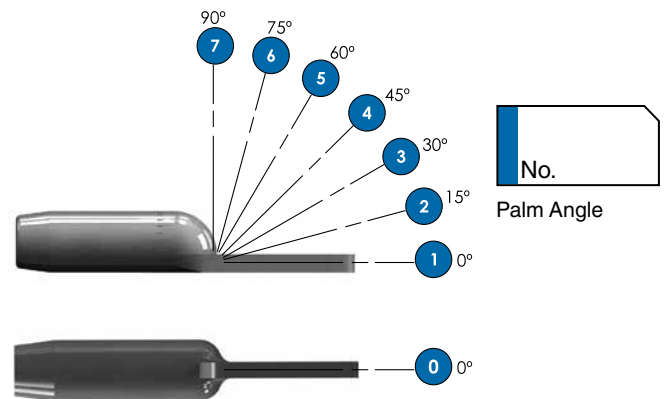
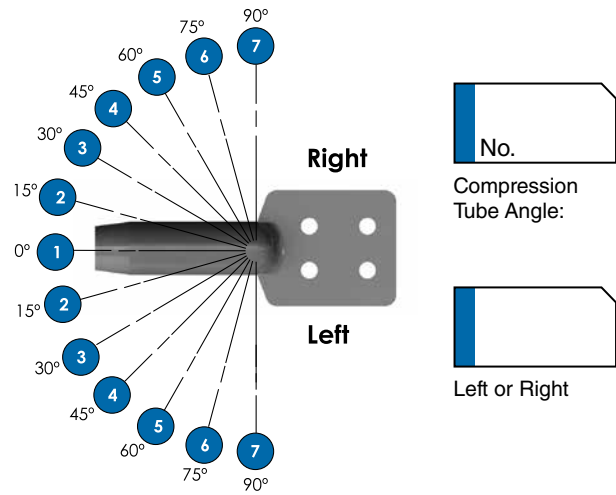
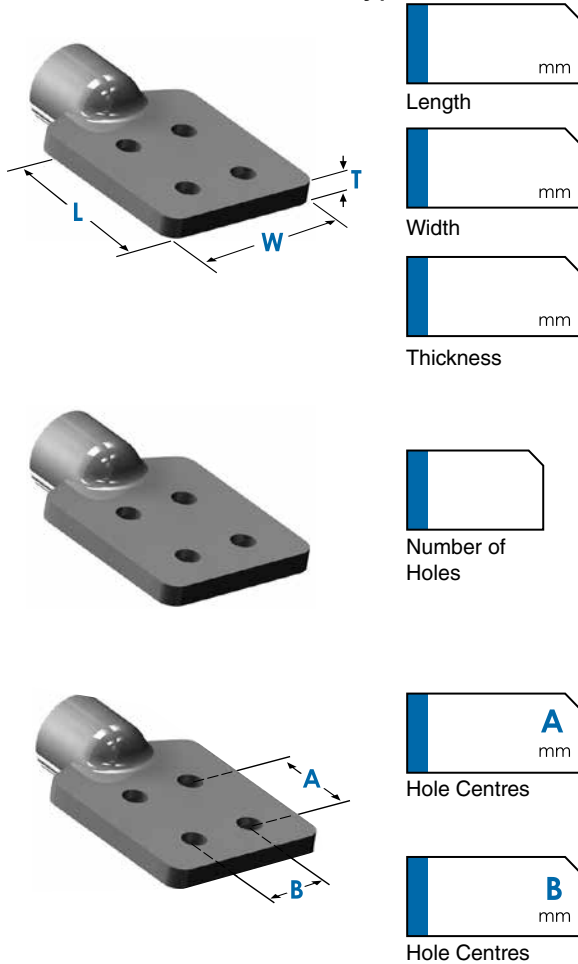
Choose from Australian standard palm types AS 62271.301



Conductor Terminations

CTA

For Non Standard Palm Types



Palm Terminal Characteristics

AS 62271.301

Terminal Number	Bolt Hole Ø (mm)	Net Contact Area (mm) ²	Min Thickness (Al)	Assigned Current Rating (Al)
1	14	780	6	80
2	14	1,430	6	200
3	14	3,670	12	630
4	14	4,670	12	800
5	14	9,300	12	1,250
6	14	4,270	12	630
7	18 or 22	7,730	20	1,250
8	18 or 22	15,300	20	2,000
9	18 or 22	21,000	20	3,150
10	18 or 22	28,100	20	4,000
11	18 or 22	6,430	20	1,000
12	18 or 22	17,183	20	2,500

Conductor Terminations



CTAPTW

Compression Terminal Aluminium Pin Type

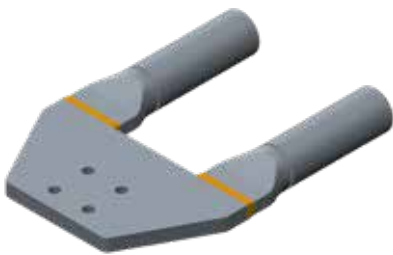
Pin type compression terminals are used to connect strung bus to equipment bushings and pins. Standard designs will carry up to 1100Amps but heavier designs are available for higher system loads. Please advise PLP of the current load expected when requesting this product. Tin plating is available as an option where connection onto copper occurs.

Part Number	Conductor Ø (mm)	Pin Ø (mm)	Bend Angle° (mm)
CTAPTW-143 - # - *	14.3	#	*
CTAPTW-188 - # - *	18.8	#	*
CTAPTW-199 - # - *	19.9	#	*
CTAPTW-238 - # - *	23.8	#	*
CTAPTW-263 - # - *	26.3	#	*
CTAPTW-293 - # - *	29.3	#	*
CTAPTW-315 - # - *	31.5	#	*
CTAPTW-338 - # - *	33.8	#	*

Part Number System

CTAPTW	Compression Terminal Aluminium Pin Type
113	Conductor Outer diameter
#	Pin diameter mm, Enter Pin Diameter (25, 30, 40 or 50mm)
*	Bend Angle° Enter angle - 0, 15, 30, 45, 90

Example: CTAPT-113-45-30



CTAT

Compression Terminal Aluminium Twin Type

Part Number	Conductor Ø (mm)	Conductor Spacing	Palm Type	Bend Angle°
CTAT-263 - # - * - ^	26.3	#	*	^
CTAT-270 - # - * - ^	27.0	#	*	^
CTAT-293 - # - * - ^	29.3	#	*	^
CTAT-338 - # - * - ^	33.8	#	*	^

Part Number System

CTAT	Compression Terminal Aluminium Twin (Type)
263	Conductor Outer diameter
#	Conductor Spacing – 115 or 160
*	Palm Type - e.g. AS1, AS2, AS3
^	Bend Angle° - 0, 15, 30, 45 or 90

Example: CTAT-263-115-AS5-30

Conductor Terminations

3

BUSLIGN™ Fittings For
Flexible Conductors
And Strung Bus



CDET

Compression Deadend Terminal

Jumper terminals are manufactured from forged aluminium and have the compression area clearly identified. Compression jumper terminals outlined below are indicative only. Palm angle is normally 30° to match a dead-end with an in-line palm. When ordering jumper terminals, please ensure the palm configuration matches the compression dead-end palm to which the terminal is to be fitted. Tin plating is available as an option where connection onto copper occurs.

Part Number	Stranding
CDET-163	19/3.25
CDET-175	30/7/2.50
CDET-210	30/7/3.00
CDET-210	37/3.00
CDET-238	19/4.75
CDET-245	30/7/3.50
CDET-263	37/3.75
CDET-270	61/3.00
CDET-270	54/7/3.00
CDET-293	61/3.25
CDET-293	54/7/3.25
CDET-315	61/3.50
CDET-315	54/7/3.50
CDET-338	61/3.75
CDET-338	54/3.75+19/2.25



Conductor Terminations



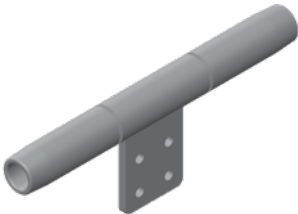
CRCTC

Compression Run Compression Tee (Closed)

Part Number	Run Conductor Ø (mm)	Tee Conductor Ø (mm)
CRCTC-263-293	26.3	29.3

Part Number System

CRCTC	Compression Run Compression Tee (Closed)
26.3	Run Conductor Outer Diameter
29.3	Tee Conductor Outer Diameter



CRPCT

Compression Run Palm Tap (Closed)

Part Number	Conductor Ø (mm)	Palm No.
CRCTC-263-AS#	26.3	AS#

Part Number System

CRCTO	Compression Run Palm Tap (Closed)
26.3	Run Conductor Outer Diameter
AS#	Palm Type - e.g. AS1, AS2, AS3

Conductor Terminations



CDE

Compression Dead-ends (ACSR Conductors)

Part Number	Conductor Stranding	Outer Sleeve Die Size	Inner Sleeve Die Size	Palm #
CDE-113-1	6/2/3.75	18 A/F	18 A/F	-
CDE-125	12/7/2.50	28.50 A/F	16 A/F	AS4
CDE-143-1	6/4.75+7/1.60	21 A/F	9.5 A/F	AS4
CDE-146	7/4.39+7/1.93	22 A/F	9.5 A/F	AS4
CDE-159	26/2.54+7/1.90	28.50 A/F	11 A/F	AS4
CDE-165-1	30/7/0.093	28.50 A/F	14.2 A/F	AS4
CDE-175-1	30/7/2.50	28.5 A/F	16 A/F	AS4
CDE-181-1	30/7/2.59	34.50 A/F	16 A/F	AS4
CDE-195-1	30/7/2.79	34.50 A/F	16 A/F	AS4
CDE-199-1	26/3.14+7/2.44	34.50 A/F	16 A/F	AS4
CDE-210-1	30/7/3.00	34.50 A/F	17 A/F	AS4
CDE-219	26/3.45+7/2.68	34 A/F	19 A/F	-
CDE-224-1	30/7/3.20	34.50 A/F	19 A/F	AS4
CDE-235-1	30/7/0.132	40 A/F	19 A/F	-
CDE-236	26/3.71 7/2.89	40 A/F	19 A/F	-
CDE-245-1	30/7/3.50	40 A/F	19 A/F	AS4
CDE-250	48/3.00+7/2.33	34 A/F	17.3 A/F	-
CDE-260-1	30/7/3.71	40 A/F	19 A/F	AS4
CDE-270-1	54/7/3.50	44.50 A/F	17 A/F	AS5
CDE-271	45/3.38/7/2.25	44.50 A/F	17 A/F	AS5
CDE-286-1	54/7/3.18	41 A/F	19 A/F	AS5
CDE-293-1	54/7/3.25	44.50 A/F	19 A/F	AS5
CDE-300-1	54/7/3.35	44.50 A/F	19 A/F	AS5
CDE-308-1	4.50/3.85/7/2.57	44.50 A/F	19 A/F	AS5
CDE-315-1	54/7/3.50	47.50 A/F	19 A/F	AS5
CDE-318-1	54/7/3.53	47.50 A/F	19 A/F	AS5
CDE-324	42/2.72+19/2.59	47.50 A/F	26 A/F	AS5
CDE-338-1	54/3.75-19/2.25	47.50 A/F	20 A/F	AS5
CDE-362-1	54/4.02+19/2.41	50 A/F	20.5 A/F	AS5

Note: Confirm stranding when ordering.
Contact PLP for transverse palm.

CDEA

Compression Dead-ends (AAC Conductors)

Please confirm stranding when ordering.



Part Number	Stranding	Palm No.	Outer Sleeve Die Size	Part Number System	
				CDEA	Compression Dead-end AAC Conductor Outer diameter
CDEA-163 -1	19/3.25	AS#4	28.5 A/F	163	Standard
CDEA-175 -1	19/3.50	AS#4	28.8 A/F	-1	Standard
CDEA-188 -1	19/3.75	AS#4	34.5 A/F		
CDEA-210 -1	37/3.00	AS#4	34.5 A/F		
CDEA-238 -1	19/4.75	AS#4	40 A/F		
CDEA-293 -1	61/3.25	AS#5	44.5 A/F		
CDEA-338 -1	61/3.75	AS#5	47.5 A/F		



Conductor Terminations



CDEAAAC

Compression Dead-ends (AAAC Conductors)

Suits both 1120 and 6201 grade aluminium conductors.
Please confirm stranding when ordering.

Part Number	Stranding	Palm Number	Outer Sleeve Die Size
CDEAAAC-135 -1	7/4.50	AS# 4	21 A/F
CDEAAAC-163 -1	19/3.25	AS#4	28.5 A/F
CDEAAAC-188 -1	19/3.75	AS#4	30 A/F
CDEAAAC-210 -1	37/3.00	AS#4	34.5 A/F
CDEAAAC-238 -1	19/4.75	AS#4	40 A/F
CDEAAAC-263 -1	37/3.75	AS#4	40 A/F
CDEAAAC-270 -1	61/3.00	AS#5	40 A/F
CDEAAAC-293 -1	61/3.25	AS#5	44.5 A/F
CDEAAAC-315 -1	61/3.50	AS#5	48 A/F
CDEAAAC-338 -1	61/3.75	AS#5	47.5 A/F

Part Number System

CDEAAAC	Compression Dead-end AAAC
135	Conductor Outer diameter
-1	Standard

CDS

Compression Dead-ends - Eye Type (SC/GZ and SC/AC)



Part Number	Conductor Stranding	Die Size
CDS-083-1	7/2.75	17 A/F
CDS-090	4/3/3.00	17 A/F
CDS-098-1	7/3.25	17 A/F
CDS-105	19/2.00	19 A/F
CDS-113-2	7/3.75	19 A/F
CDS-120-1	7/4.00	19 A/F
CDS-128-2	7/4.25	19 A/F

Note: Made from 304 grade stainless steel incorporating an earth bonding point.

CDST

Compression Dead-ends - Tongue Type (SC/GZ and SC/AC)



Part Number	Conductor Stranding	Die Size
CDST-083	7/2.75	17 A/F
CDST-090	3/4/3.00	17 A/F
CDST-098	7/3.25	17 A/F
CDST-113	7/3.75	19 A/F
CDST-128	7/4.25	19 A/F

Note: Made from 304 grade stainless steel incorporating an earth bonding point.