



SERVICE-GRIP DEAD-END

Be sure to read and completely understand this procedure before applying product. Be sure to select the proper PREFORMED™ product before application.

1.00 NOMENCLATURE

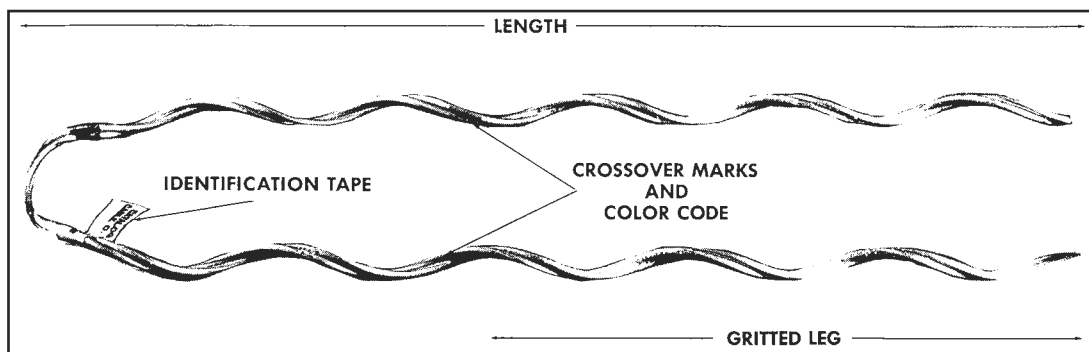


FIGURE 1

- 2.00 Using the spool insulator as a sheave, pull service to desired sag and insert dead-end around the spool as shown. (Figure 2)



FIGURE 2

- 4.00 Align cross-over marks and wrap on second leg. The SERVICE-GRIP Dead-end can be applied easily with one hand. (Figure 4)



FIGURE 4

- 3.00 Holding the sag with one hand, wrap on one leg of the SERVICE-GRIP Dead-end starting at the cross-over mark. (Figure 3)



FIGURE 3

- 5.00 Completed application of the SERVICE-GRIP Dead-end. (Figure 5)



FIGURE 5

- 6.00** ALTERNATE METHOD #1: Pull service to desired sag, then wrap neutral around spool bar to hold sag while the SERVICE-GRIP Dead-end is being applied. (Figure 6)



FIGURE 6

- 7.00** ALTERNATE METHOD #2: The phase conductors can be used to pull and hold triplex to desired sag while SERVICE-GRIP Dead-end is applied to neutral. (Figure 7)



FIGURE 7

- 8.00** ALTERNATE METHOD #3: The hand line is split and a rolling bend knot is tied to the triplex. The ground man can pull and hold triplex to desired sag while lineman applies the SERVICE-GRIP Dead-end. (Figure 8)



FIGURE 8

- 9.00** Three SERVICE-GRIP Dead-ends installed on one spool insulator. (Figure 9)



FIGURE 9

- 10.00** SERVICE-GRIP Dead-ends used at mid-span. (Figure 10)

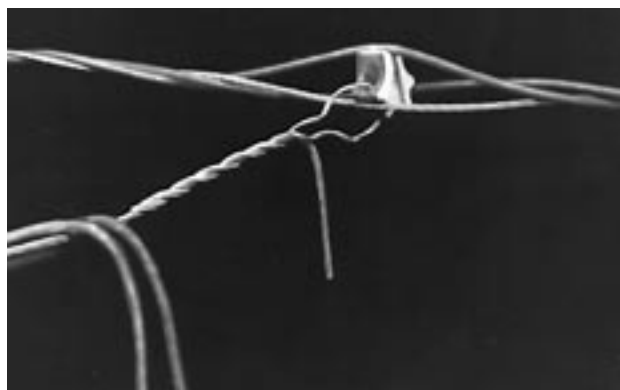


FIGURE 10

11.00 GENERAL NOTES

- 11.01** SERVICE-GRIP Dead-ends are to be used on service drops only. They are not to be used for primary or secondary circuits on distribution lines.
- 11.02** SERVICE-GRIP DEAD-ENDS ARE PRECISION DEVICES. To insure a tight assembly and prevent distortion, install as illustrated.
- 11.03** To minimize grit loss, store in cartons under cover, preferably shelf storage, until used. Do not suspend from hooks in the back of service trucks.
- 11.04** SERVICE-GRIP Dead-ends may be applied three times on new installations if sag adjustments are necessary.

Do not reuse after the final application.

- 11.05** This product is designed for use on smooth-contoured hardware and insulators with ample radius to maintain the loop area (1" min. loop dia.). Drive hooks are not recommended without the use of a thimble in the loop of the dead-end.

12.00 SAFETY CONSIDERATIONS

- 12.01** This application procedure is not intended to supersede any company, construction or safety standards. This procedure is offered only to illustrate safe application for the individual. **CAUTION: Failure to follow these procedures and restrictions may result in personal injury or death.**
- 12.02** This product is intended for a single (one-time) use and for the specified application. **CAUTION: DO NOT REUSE OR MODIFY THIS PRODUCT UNDER ANY CIRCUMSTANCES.**
- 12.03** This product is intended for use by trained technicians only. This product **should not be used** by anyone who is not familiar with, and not trained in, the use of it.
- 12.04** When working in the area of energized lines, **EXTRA CARE** should be taken to prevent accidental electrical contact.
- 12.05** For proper performance and personal safety, be sure to select the proper size PREFORMED™ product before application.
- 12.06** PREFORMED products are precision devices. To insure proper performance they should be stored in cartons under cover and handled carefully.



PREFORMED LINE PRODUCTS

P.O. Box 91129, Cleveland, Ohio 44101 • 440.461.5200 • www.preformed.com • e-mail: inquiries@preformed.com