



PREFORMED LINE PRODUCTS

The connection you can count on.

TELE-COMMUNICATIONS

Product Catalogue



Standard Terms and Conditions of Business

1. Application of Conditions

These terms and conditions shall govern and control all offers and sales by PREFORMED™ LINE PRODUCTS (SOUTH AFRICA) (PTY) LTD. (herein called "PLP"). Unless expressly accepted in writing signed at its head office in Pietermaritzburg by an authorised signatory, any qualification of these conditions in a customer's order or enquiry, or anything contrary to or conflicting with any of these conditions shall be treated as inapplicable and of no effect.

2. Acceptance

Any tender or quotation by PLP only applies for thirty days from date thereof; and no order shall bind PLP until the customer shall receive written confirmation thereof from the PLP, duly signed on behalf of PLP.

3. Prices

All prices are Nett, F.O.R. Works at Pietermaritzburg and subject to change without notice. Value Added Tax (VAT) is not included and will be added-on where applicable. Payment terms are net 30 days.

4. Financial Responsibility

The customer's financial responsibility is at all times subject to approval of PLP's credit department and PLP at any time may require payment in advance or a satisfactory security or guarantee that invoices will be paid promptly when due. If the customer fails to comply with any term of payment, PLP reserves the right to withhold further deliveries or to terminate the agreement and any unpaid amount thereupon shall become due immediately.

5. Terms of Payment

Net 30 days from date of PLP's statement. Should any amount not be paid timeously, all other amounts payable by the customer, but not yet due, shall immediately become due and payable. Interest at the rate of 15.5% p.a shall be payable on all overdue amounts calculated from due date to date of actual payment.

6. Delivery

PLP will use its best endeavors to deliver the products by the time fixed for delivery, but if from any cause other than the wilful default of PLP delivery is delayed, PLP will not be responsible for any loss or damage thereby caused to the customer. Failure of one delivery shall not vitiate the contract as to others. No responsibility is accepted for delays due to loss in manufacturing or for damage and/or other delays due to Act of God, War, Fire, Civil Commotion, Accidents, and for other causes beyond PLP's control. Offers of delivery from stock are subject to the fitting being unsold on receipt of order.

7. Delivery Charges

Unless otherwise agreed in writing or stated in the confirmation of order, delivery charges are for customer's account.

8. Warranty

PLP warrant that all products manufactured and/or supplied by PLP are free from defects in material and workmanship under normal and proper usage for a period of one year from the date of delivery, when such products have been installed and maintained to PLP's recommended procedures. Subject to the provisions of clause 9 below, in the event of breach of this warranty, PLP's liability will be limited to the free replacement only of the products provided such defect is proved to be directly attributable to defective materials or workmanship and subject to a claim being received by PLP in writing within 14 (fourteen) days of such defect. This warranty is exclusive and in lieu of all other warranties, whether express, implied or otherwise arising by operation of law, trade, or course of dealing. In addition, the remedies set forth herein are the sole and exclusive remedies. PLP shall not be liable for any consequential or incidental damages of any kind.

9. Liability

The liability of PLP for any loss or damage, whether special or general, direct or consequential, in respect of any claim arising out of any contract entered into with a customer in connection with the manufacture and/or the sale and/or the supply and/or the delivery of our products, whether such claim shall be for breach of contract, breach of warranty, breach of any statutory duty or for any delict (including the negligence of our employees or servant) shall not exceed the sale price of the relevant products sold to the customer.

10. Packing

All goods are packed in PLP's standard corrugated cartons, wooden crates and/or suitable alternatives at PLP's discretion.

11. Loss or Damage in Transit

PLP is not responsible for this risk. In the case where PLP has accepted transit risk in terms of clause 1 of these conditions, transit loss or damage must be reported by the customer or consignee immediately in writing to the carrier, and also to PLP. Documentary evidence, as prescribed by the CARRIERS must be given by the consignee to PLP within seven days of receipt of the consignment in question.

12. Testing and Inspection

When testing and inspection is specified by customers and agreed to by PLP, PLP shall test/ inspect at its Works in a suitable area designated by PLP.

13. Deviations in Quantities Manufactured

Products manufactured are subject to a deviation of plus or minus 10% in quantity.

14. Standard Packs

PLP reserves the right to supply in increments of its standard packs.

15. Cancellation

The customer shall not be entitled to cancel or repudiate any order or refuse to accept delivery of any order and/or claim damages or set-off as a consequence of late or short delivery.

16. Returns

No product shall be returned without PLP's prior written authorization. Only non-obsolete standard items in original cartons may be returned. Carriage must be prepaid. Requests for return must be instituted within 90 days of original delivery and returns will be subject to factory inspection before acceptance and credit authorization. PLP reserves the right to apply a minimum servicing charge of 10% of the invoice amount.

17. Specifications

PLP reserves the right to change specifications without prior notice.

18. Ownership and Risk

Notwithstanding the delivery of any product to a customer, ownership of the product shall not pass to the customer until PLP has received payment in full of the contract price of the said product. Risk in the product shall pass to the customer on delivery.

19. Costs

Should PLP incur legal costs in regard to litigation with the customer or for the collection of any amount due by the customer, the customer shall pay such costs on the attorney-and-client scale as well as collection costs calculated at 10% (TEN PERCENT) of each and every payment made.

20. Confidentiality

The customer agrees that all information furnished by or obtained from PLP in connection with the sale of goods hereunder will be confidential, and the Buyer agrees not to disclose any such information to any other person, or use such information for any purpose, other than performing this contract.

21. Miscellaneous

The failure of either party to insist upon performance of any term or condition herein or to exercise any right or privilege shall not thereafter waive the future performance of such term, condition, right or privilege or of any other terms, conditions, rights or privileges, whether of the same or similar type. The right herein and the construction of these Terms and Conditions shall be governed by the laws of the Republic of South Africa, without giving effect to principles of conflict of laws. These Terms and Conditions shall be binding upon and inure to the benefit of the parties hereto and their respective successors and assigns. Each provision hereof shall be severable, and in the event any provision hereof is held to be contrary to law, invalid or unenforceable, the remaining provisions shall not be affected thereby, but shall remain in full force and effect. The paragraph headings herein are solely for the convenience of and reference by the parties and do not constitute any part of these Terms and Conditions. The customer may not assign its rights or delegate its obligations hereunder without PLP's prior written consent.

22. Patent

PLP shall defend the customer against any claim of infringement and shall pay any resulting damages finally awarded, provided that (a) the customer promptly notifies PLP in writing of any claim, and (b) PLP has sole control of the defence and all related settlement negotiations. This obligation does not apply to claims arising out of combinations of goods with goods provided by others, or to claims resulting from compliance of the goods with customer's design or specifications, or which the customer assumes and shall hold PLP harmless for any claims thereof.



Index

COYOTE® Fiber Optic Termination Point Closure (FTP)	3 - 4
COYOTE® Service Termination Point Junior Closure (STP-JR)	5 - 8
COYOTE® Service Termination Point Medium Closure (STP-MD)	9 - 11
COYOTE® Service Termination Point Large Closure (STP-L)	12 - 15
COYOTE® Service Termination Point X-Large Closure (STP-XL)	16 - 20
COYOTE® Single Fiber Management System Closure (SFMS)	21 - 26
FIBERLIGN® Dead End (FDE)	27 - 28
FIBERLIGN® Dead End For Microfiber (FDEM)	29
Plastic Capstan Clamp (PCC)	30 - 31
Stay Assembly V1	32
Stay Assembly V2	33
Thimble Grip (TGG)	34
Double Wrap Guy Grip (DWGG)	34
STAYROD (STROD)	34
FIBERLIGN® Downlead Cushioned Monopole Clamp (DCCMP)	35
FIBERLIGN® Downlead Cushioned Clamps (DC800)	36
Telecom Universal Bracket-Downlead Clamp (TUB)	37



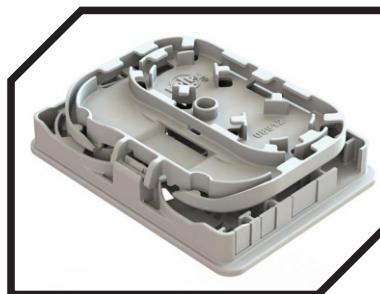
COYOTE[®] FTP FIBER-OPTIC TERMINAL POINT



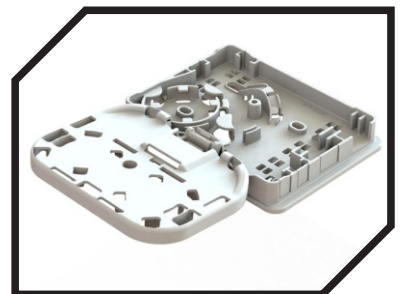
 **2 Splice Capacity**



 **2 Connectors**



 **Secure Fiber Storage**



PLP®Fiber Optic Products

COYOTE ® FTP(FIBER OPTIC TERMINATION POINT)

Description

PLP Fiber-Optic Terminal Point -FTP is a compact wall organizer for protecting and accommodating internal fiber optic splices in homes, offices or apartments .

The FTP is easily installed on walls without the use of special tools, The Coyote FTP solution is manufactured in accordance with ISO 9001:2015 Quality Procedures to ensure excellent quality and is backed by the unparalleled customer and field experience carried by PLP since 1947.

Key Features

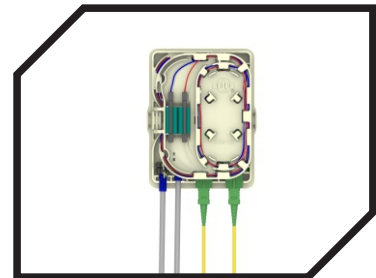
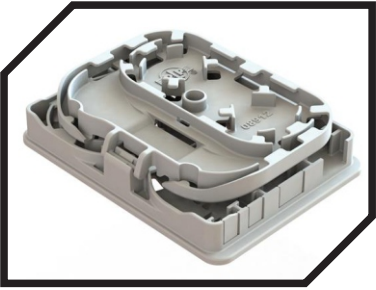
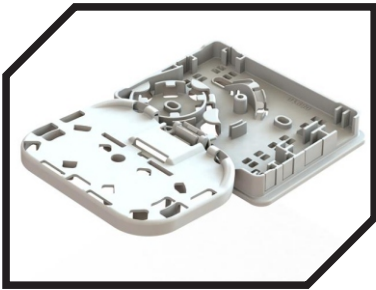
- 2 Fiber Splice
- Multiple entry points(rear included)
- 2 Connectors
- Secure Fiber Storage
- Robust engineered construction
- Ease of installation

Components and Packing

- 1 - Lid
- 2 - Base with splice tray and support block for
 - Splice protectors/ Mechanical splice
- 3 - Felt (Optional)
- 4 - Plastic cable ties
- 5 - Wall mounting screws and wall plugs
- 6 - Installation manual (QR code downloadable)

Characteristics

- Allows accommodation of (2) adapters for subscriber output and (5) drop wire inputs.
- Tray allows (2) splicing by (mechanical or fusion.)
- Designed for pre-connectorized system to store fiber jumper.
- Fiber inputs ports through the back of the base.
- Compact size: H=108mm
L = 80 mm x P = 28 mm.
- Colours: white and grey (other colors available at special request. MOQ's apply)
- Can be easily installed on any flat vertical wall.
- The tray design allows for perfect routing and control of fibers.

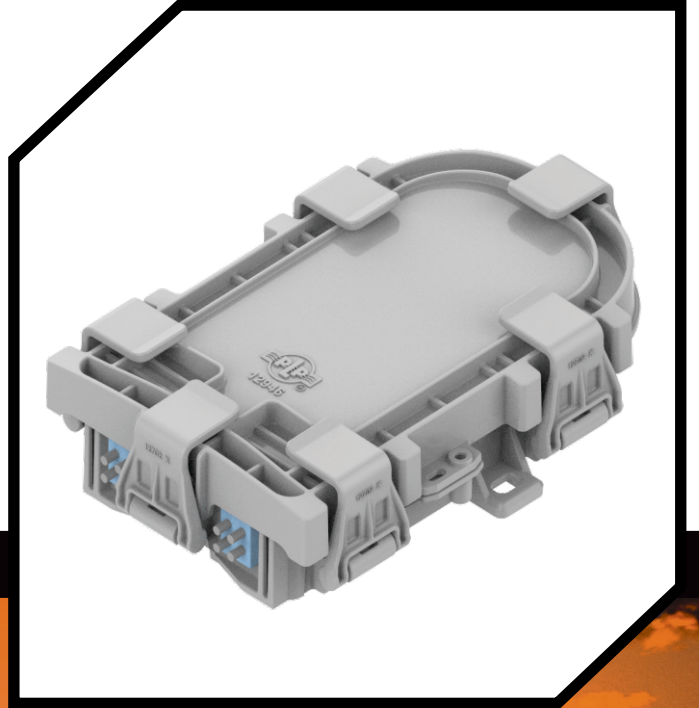


Catalog No.	Colour	Description
FTP-White	White	Fiber-Optic Terminal Point
FTP-Beige	Beige	Fiber-Optic Terminal Point
FTP-Grey	Grey	Fiber-Optic Terminal Point



P/P PREFORMED LINE PRODUCTS
The connection you can count on.

COYOTE[®] STP-JR (Service Termination Point)



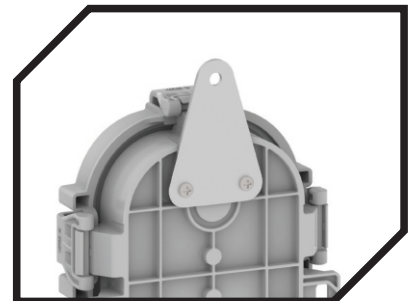
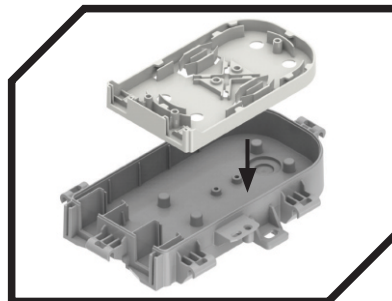
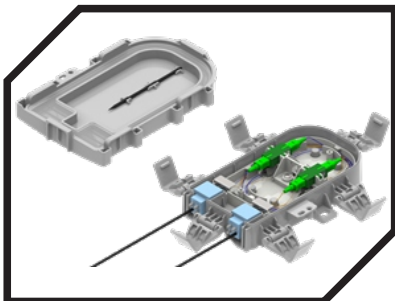
12 Splice Capacity



IP-68



Underground and
Aerial Application



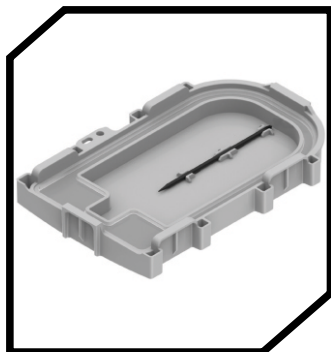


PLP®Fiber Optic Products

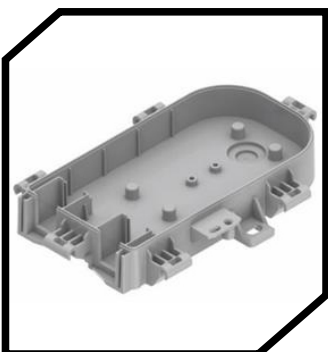
COYOTE® STP-JR(SERVICE TERMINATION POINT)

Description

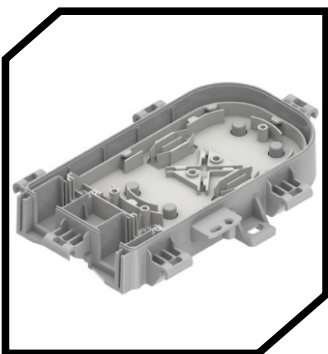
The COYOTE® STP-JR is a small scale, cost effective closure which provides an alternative to traditional network interface devices, while offering much greater application flexibility. The robust latch system, paired with an integrated overmoulded cover, allows for quick re-entry and creates a secure seal over a wide range of cable profiles.



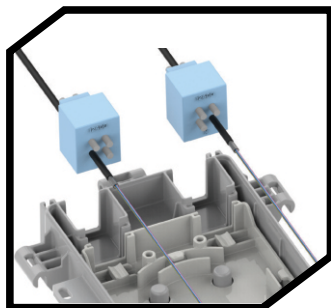
STP-JR Lid + Fiber pick



Base with no Organizer



Splice Organizer

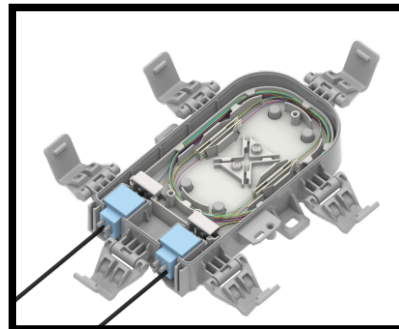


grommets view

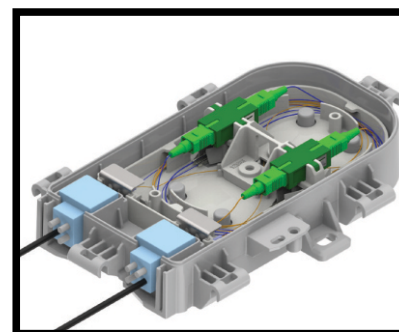
Network operators value the security of each splice and desire robust closure along the entire fiber route to ensure that they can maintain the high level of service today's customers demand. Manufactured from high strength materials and subjected to stringent thermocycle and Ingress protection tests, the STP-JR is closure that is built to last and protect your Fiber Optic splices from water ingress. Our IP 68 rating is not just a statement, it is a Testimony of a product that has been engineered, tried and tested.

Key Features:

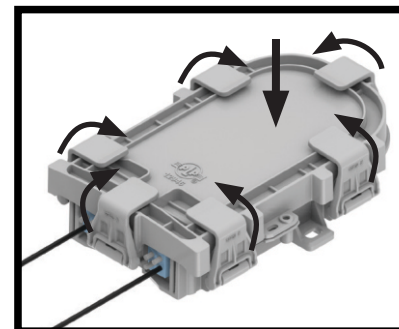
- Size: 8" x 4.8" x 1.9"
(200 x 125 x 49 mm)
- Application: Indoor/Outdoor Premises, Pedestal Wall/Pole Network Interface Device (NID)
- Degree of Protection: IP-68
- Material Construction: Rugged UV Stabilized Flame Retardant Material (UL94-5VA Rated)
- Max Splice Capacity: 12 Single Fusion, 4 Mechanical
- Max Adapter Quantity: 2 Simplex SC, 2 Duplex LC
- Grommet Quantity: 2(Multi-Hole Grommets Available)
- Aerial- Underground Application
- 12 Fiber Splice Capacity
- Ease of Installation
- Connected Facility



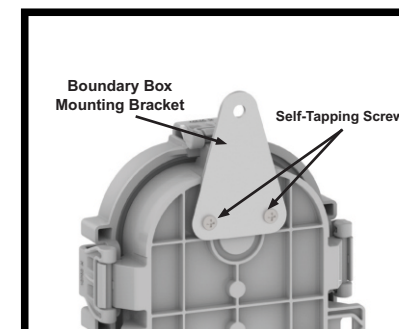
COYOTE® STP-JR splice only



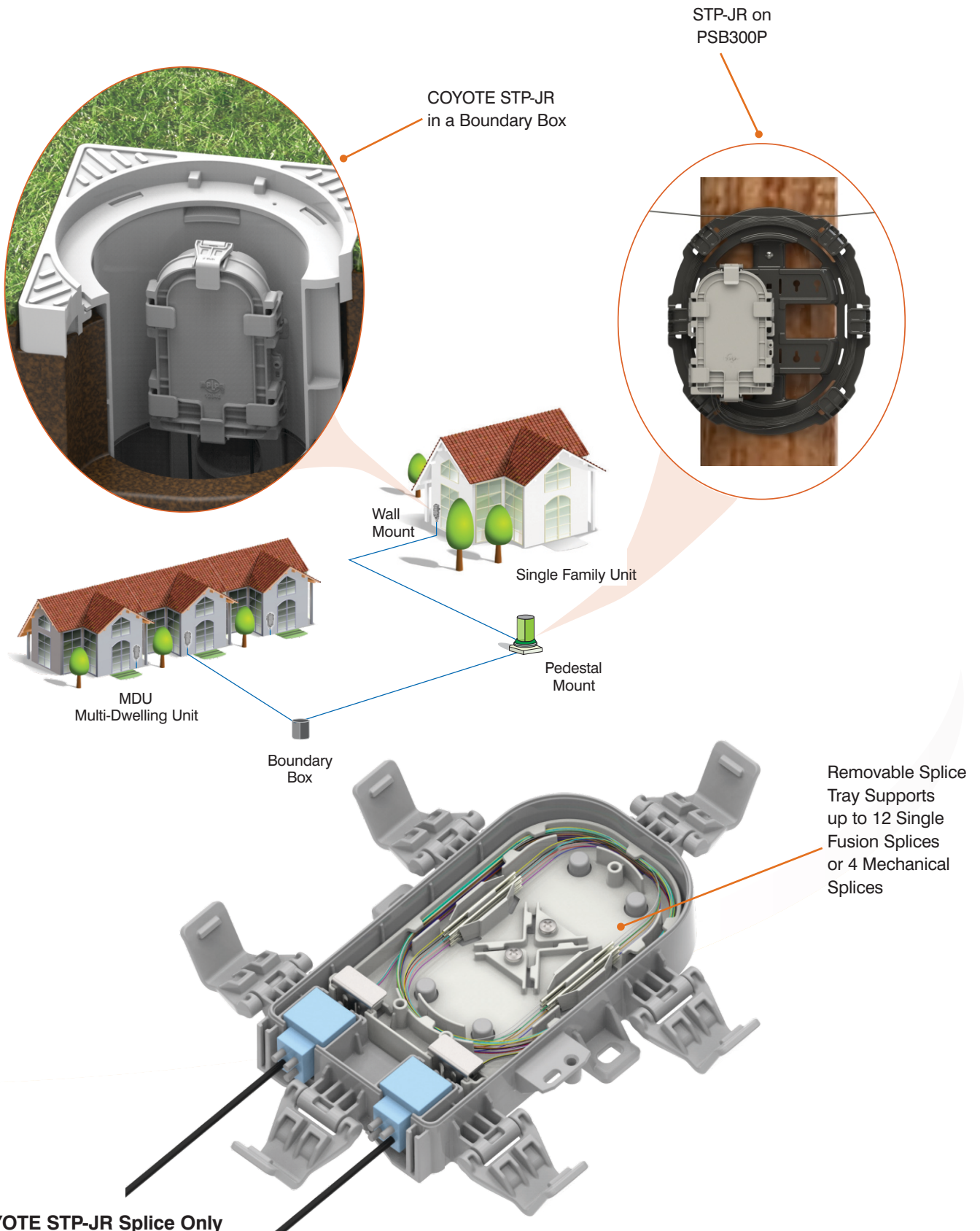
COYOTE® STP-JR splice + cross connect

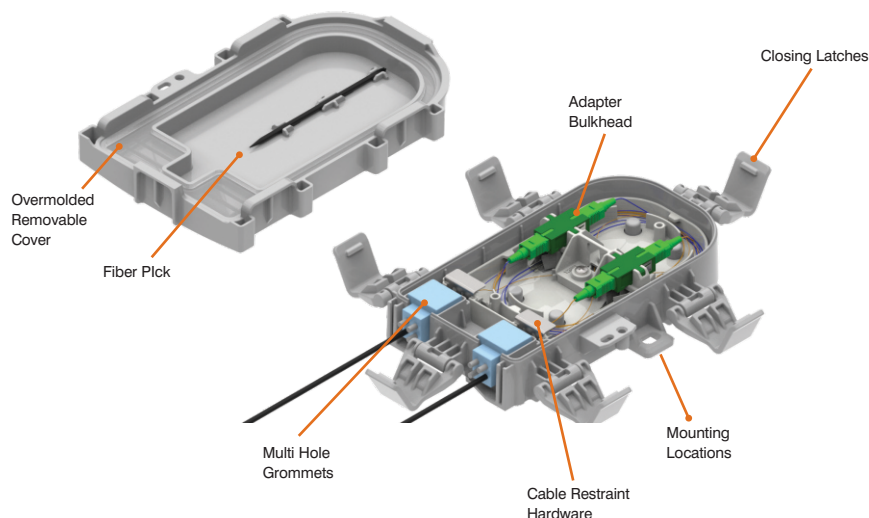


6 Latches



Boundary box mounting bracket








COYOTE STP-JR Splice and Cross-Connect

COYOTE[®] STP-JR Ordering Instructions

Catalog Number Example: STP-JR-MM-2-1-N

 STPJR – **XX** – **X** – **XX** – **X**

Grommet Selection Select 4	Cable Diameter Range In
A	SOLID / PLUG 80812437
B	.170 - .220 (4.3 - 5.6 MM) ROUND CABLES 80812219
C	.220 - .270 (5.6 - 6.9 MM) ROUND CABLES 80812433
D	.270 - .320 (6.9 - 8.1 MM) ROUND CABLES 80812220
E	.320 - .370 (8.1 - 9.4 MM) ROUND CABLES 80812434
F	.370 - .420 (9.4 - 10.7 MM) ROUND CABLES 80812172
G	.420 - .470 (10.7 - 11.9 MM) ROUND CABLES 80812435
H	.470 - .550 (11.9 - 14.0 MM) ROUND CABLES 80812436
J	.156 - .170 (4.0 - 4.3 MM) ROUND DROP CABLES 80812251
K	.093 - .125 (2.4 - 3.2 MM) ROUND DROP CABLES 80812400
1	.2x 2.4 - 3.2 MM Round Drop Cables 1x 6.9 - 8.1 MM Round Cable TLG-1

Organizer Options Select 1
1
Splice Only
2
Splice and Cross-Connect

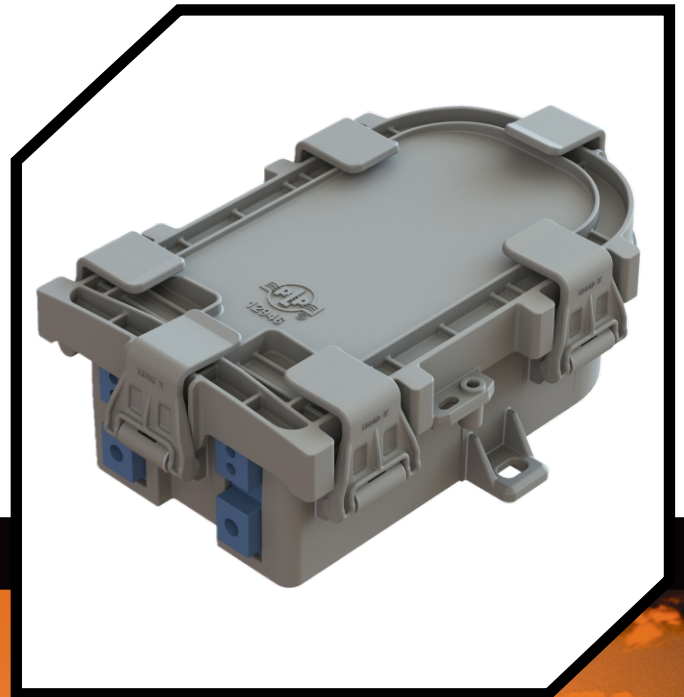
Adapter Type Select 1		
N	NONE	0
1		1 or 2
	SC/APC	
2		1 or 2
	SC/UPC	
3		1 or 2
	LC/APC	
4		1 or 2
	LC/UPC	

Accessories	
A	STP MOUNTING BRACKET
B	FIBER PICK
C	FELT AND CABLE TIES
D	MEASURE TAPE
E	SPLICE PROTECTORS 12
F	PEDESTAL BRACKET
N	NONE

*Items in blue now supplied std in all kits.



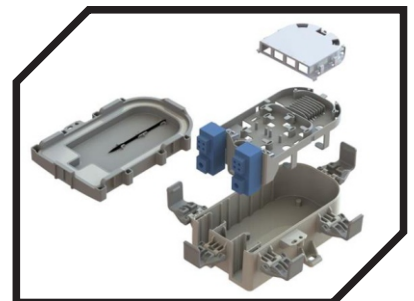
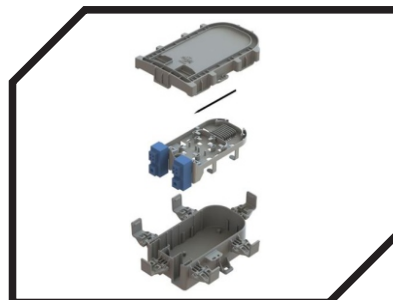
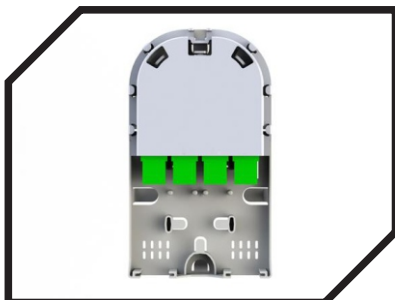
COYOTE[®] STP-MD Service Termination Point- Medium



 24 Splice Capacity

 IP-68

 Underground and Aerial Application



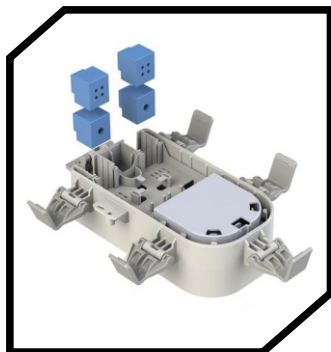


PLP®Fiber Optic Products

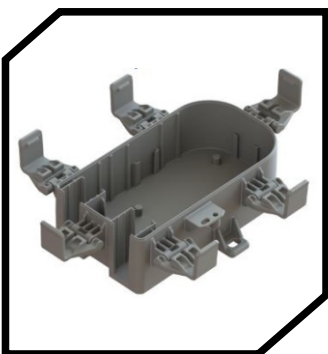
COYOTE® STP-JR(SERVICE TERMINATION POINT)

Description

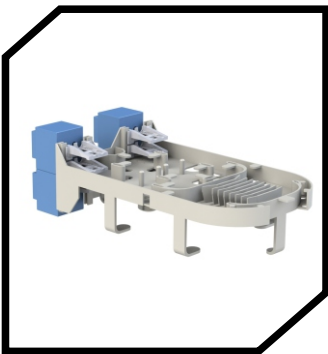
The COYOTE® STP-MD is a small scale, cost effective closure which provides an alternative to traditional network interface devices, while offering much greater application flexibility. The robust latch system, paired with an integrated overmoulded cover, allows for quick re-entry and creates a secure seal over a wide range of cable profiles.



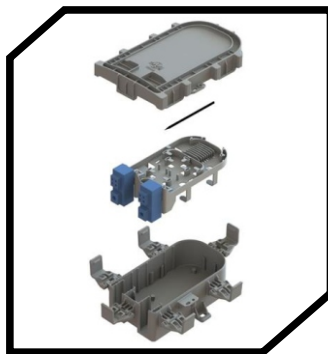
Grommet View



No Splice Platform



Splice Platform + Retention Clips

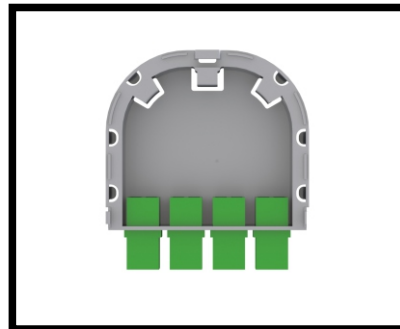


COYOTE® STP-MD Splice only

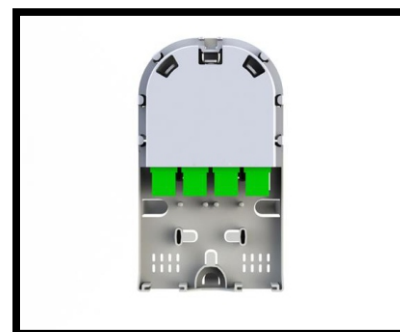
Network operators value the security of each splice and desire robust closure along the entire fiber route to ensure that they can maintain the high level of service today's customers demand. Manufactured from high strength materials and subjected to stringent thermocycle and Ingress protection tests, the STP-MD is closure that is built to last and protect your Fiber Optic splices from water ingress. Our IP 68 rating is not just a statement, it is a Testimony of a product that has been engineered, tried and tested.

Key Features:

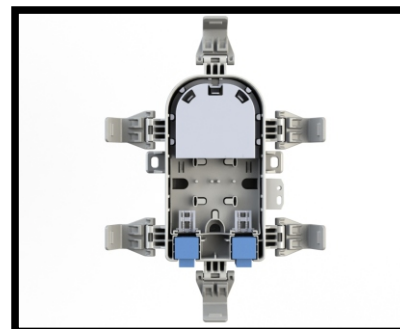
- Size: 8" x 4.8" x 2.75"
(200 x 125 x 70 mm)
- Supports up to 4 single or multi-hole grommets covering a cable diameter range from 2.4mm to 14.0mm.
- Drops: Maximum 8
- Max Splice Capacity: 24
- Max Adapter Capacity: 4 Flangless SC connectors.
- Capable of storing expressed buffer tube cable up to 24ct standard buffer tube, 48ct tight buffer tube.
- One slot available for small PLC Splitter (max length: 40mm)
- If Splitter installed, splice count drops to 21 single fusion splices.
- Re-enterable and reusable.
- Designed to the TELCORDIA GR-771-CORE standard.
- Constructed with UV stabilized, flame retardant material.
- IP 68 rating: 100% waterproof
- Express loop through compatible
- Aerial - Underground Application.
- Ease of Installation.
- Connected facility (2x)



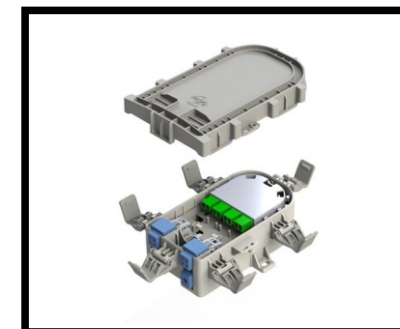
Bulkhead + Adapters



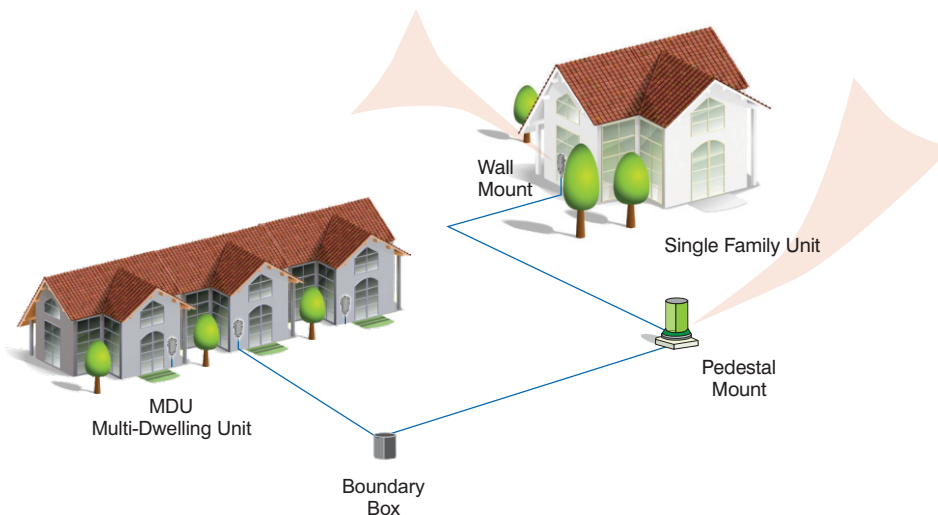
Splice Platform + Bulkhead + Adapters



Base + latches + grommets + bulkhead + retention clips



COYOTE® STP-MD Splice + Cross connect







COYOTE[®] STP-MD Ordering Instructions

Catalog Number Example: STP-MD-MM-2-1-N

STPMD- XX - X - XX - X

Grommet Selection Select 4		Cable Diameter Range In
A		SOLID / PLUG 80812437
B		.170 - .220 (4.3 - 5.6 MM) ROUND CABLES 80812219
C		.220 - .270 (5.6 - 6.9 MM) ROUND CABLES 80812433
D		.270 - .320 (6.9 - 8.1 MM) ROUND CABLES 80812220
E		.320 - .370 (8.1 - 9.4 MM) ROUND CABLES 80812434
F		.370 - .420 (9.4 - 10.7 MM) ROUND CABLES 80812172
G		.420 - .470 (10.7 - 11.9 MM) ROUND CABLES 80812435
H		.470 - .550 (11.9 - 14.0 MM) ROUND CABLES 80812436
J		.156 - .170 (4.0 - 4.3 MM) ROUND DROP CABLES 80812251
K		.093 - .125 (2.4 - 3.2 MM) ROUND DROP CABLES 80812400
1		2x 2.4 - 3.2 MM Round Drop Cables 1x 6.9 - 8.1 MM Round Cable TLG-1

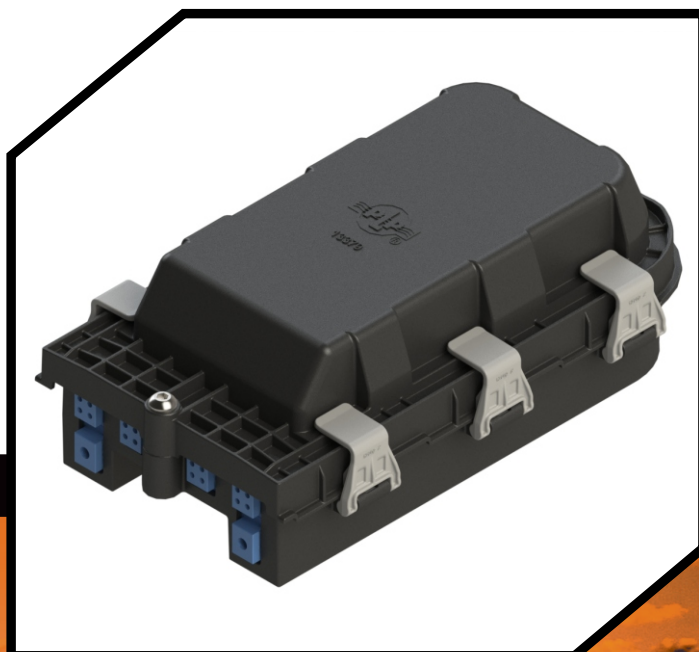
Organizer Options Select 1	
1	
	Splice Only
2	
	Splice and Cross-Connect

Adapter Type Select 1		
N	NONE	0
1		1 or 2
	SC/APC	
2		1 or 2
	SC/UPC	
3		1 or 2
	LC/APC	
4		1 or 2
	LC/UPC	

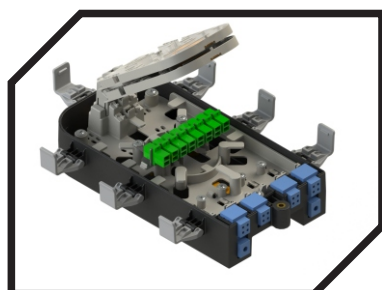
Accessories	
A	STP MOUNTING BRACKET
B	FIBER PICK
C	FELT AND CABLE TIES
D	MEASURE TAPE
E	SPLICE PROTECTORS 12
F	PEDESTAL BRACKET
N	NONE

*Items in blue now supplied std in all kits.

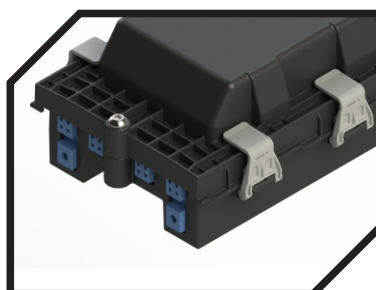
COYOTE® STP-L (Service Termination Point)



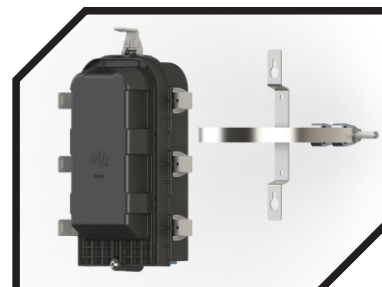
 24-96F Splice Capacity and Cross-connect facility



 IP-68

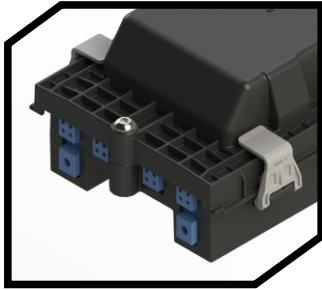


 Underground and Aerial Application





COYOTE® STP-L (Service Termination Point-Large)

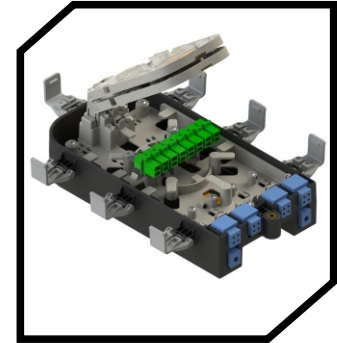


Grommet view
2x Feeder / 16x Drops (Max)

Description

The COYOTE® STP-L is a small scale, cost effective closure which provides an alternative to traditional network interface devices, while offering much greater application flexibility. The closure features a unique design with independent access.

The robust latch system, paired with an intergrated overmoulded cover, allows for quick re-entry and creates a secure seal over a wide range of cable profiles.



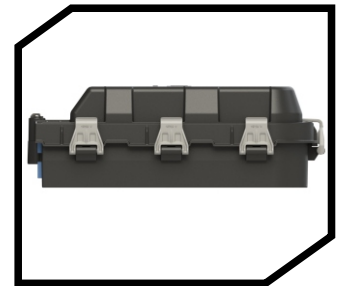
48F 8SC connectors or 16LC



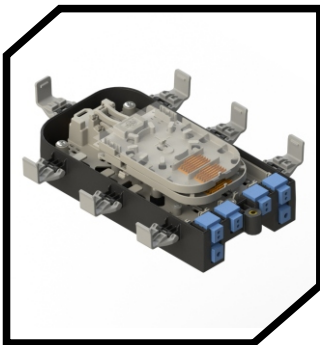
Buffer tube storage area

Key Features:

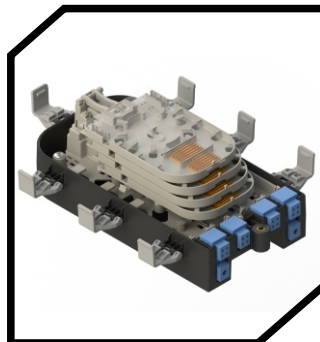
- Can support up to 16 drops with 2 ports for loop through.
- Constructed from UV-stabilized, flame retardant material.
- Robust latch system paired with factory installed gaskets allows for quick re-entry and re-use.
- Versatile design capable of being configured for Splice, Pre-Con and GPON applications.
- Intergrated Splitter facility with dedicated Splice protector holder for 2x Micro PLC Splitters and 2x 40mm Splice Protectors.
- Each Splice tray accommodates 2x interchangeable 12F Splice blocks (Double stack) which can be replaced with a PLC Splitter block (Holds up to 4 Splitters).



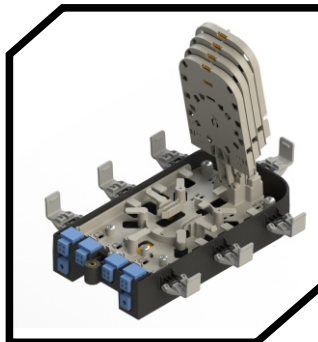
Deep Lid + Base + latches



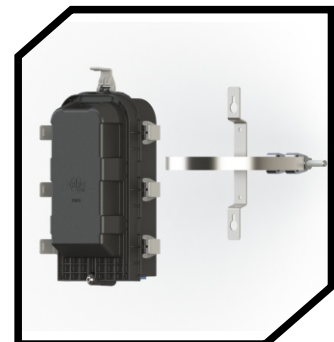
48F Splice Organizer



96F Splice Organizer



PLC Splitter facility with 2x splitter
dedicated splice holders and bare
fibre storage.







Pole Installation

COYOTE STP-L 6 Grommet Design Ordering Instructions

Catalog Number Example: STPL-48-AAAAEE-1-4-N

STP-L - X - XXXXXX - X-X - X
 (Section 1) (Section 2) (Section 3) (Section 4)
 Must be in alphabetical order



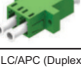



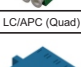

Section 1

Fibre Count	
24	
	1 Splice Tray
48	
	2 Splice Trays
72	
	3 Splice Trays
96	
	4 Splice Trays

Section 2

Grommet Selection Select 6	Cable Diameter Range In
A	SOLID / PLUG 80812437
B	.170 - .220 (4.3 - 5.6 MM) ROUND CABLES 80812219
C	.220 - .270 (5.6 - 6.9 MM) ROUND CABLES 80812433
D	.270 - .320 (6.9 - 8.1 MM) ROUND CABLES 80812220
E	.320 - .370 (8.1 - 9.4 MM) ROUND CABLES 80812434
F	.370 - .420 (9.4 - 10.7 MM) ROUND CABLES 80812172
G	.420 - .470 (10.7 - 11.9 MM) ROUND CABLES 80812435
H	.470 - .550 (11.9 - 14.0 MM) ROUND CABLES 80812436
J	.156 - .170 (4.0 - 4.3 MM) ROUND DROP CABLES 80812251
K	.093 - .125 (2.4 - 3.2 MM) ROUND DROP CABLES 80812400
1	2x 24 - 3.2 MM Round Drop Cables 1x 6.9 - 8.1 MM Round Cable TLG-1

Section 3

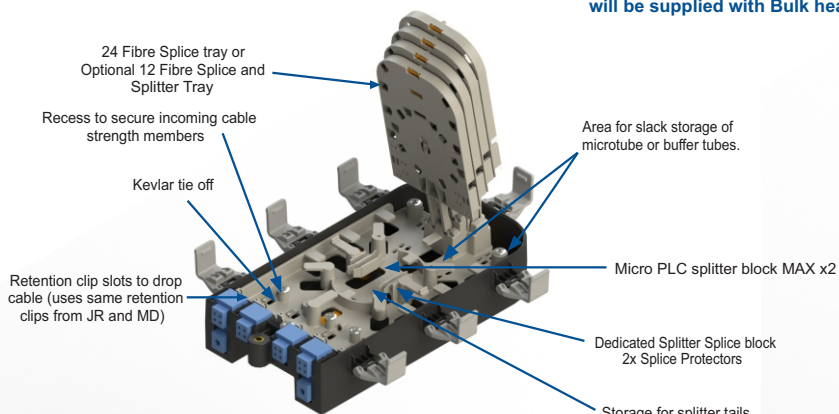
Adapter Type	
S	Splice only
1	 0* to 8
2	 0* to 8
3	 0* to 8
4	 0* to 8
5	 0* to 4
6	 0* to 4
7	 0* to 4
8	 0* to 4

Section 4

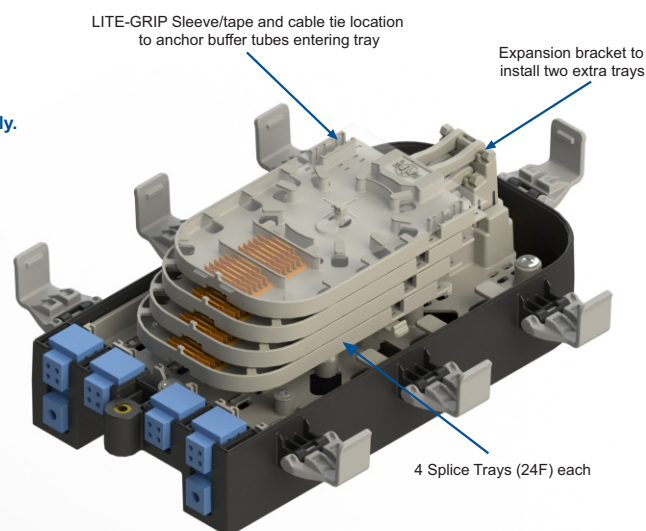
Accessories	
N	None
1	Splice Protector
2	Pole/ Wall MNT BKT Only
3	External Cable Fixation BKT
4	PLC-Splitter Block (80812439)
5	Aerial Pole MNT BKT with 2x Coach screws
6	Aerial Pole MNT BKT with 1x MPS Strap ASSY.
7	Wall MNT BKT with 2x Wall Plugs and Screws

*Pigtails and PLC Splitters available on special request.

*Note: If zero is selected, Closure will be supplied with Bulk head only.



Fibre and splitter storage tray



96F Splice Only Configuration



COYOTE[®] STP-L Specifications

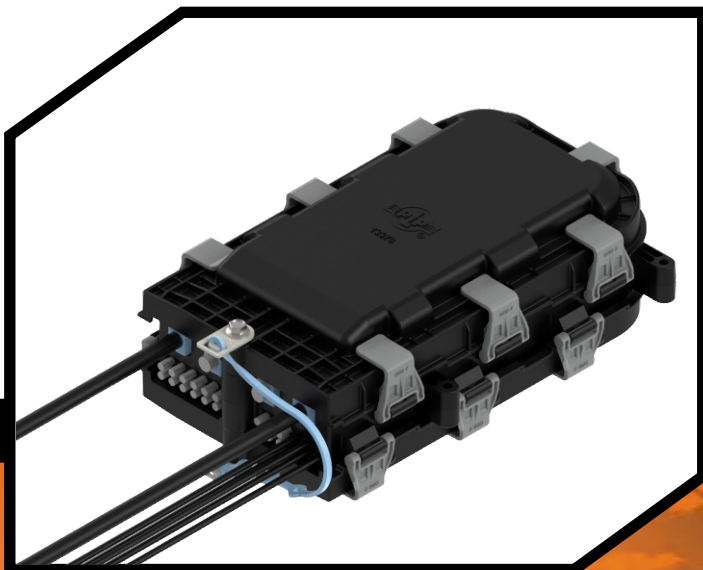
Specifications

Features	Description
Splice Capacity (Maximum)	96
Splice Tray Capacity (Maximum)	4
Express Capacity (Maximum) – Microtube, Blown Fiber, Buffer Tube	96, 72, 48
Grommet Quantity – Express Chamber, Splice and Drop Chamber	2(Bottom) and 4 (Top)
Cable Diameters	0.093" – 0.55" (2.4 – 14 mm)
Configuration	Butt
Application	Aerial (ADSS); Underground
Ingress Protection	IP68
Size ¹	7.8" W x 11.8" L x 4.4" H (198 x 300 x 112 mm) [1 Deep Cover]
Pallet Quantity	72

¹Outermost part of the assembly



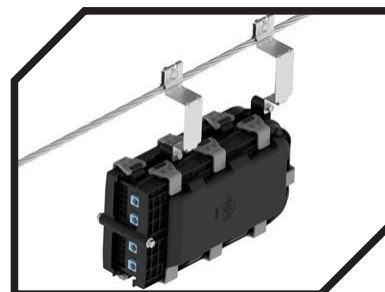
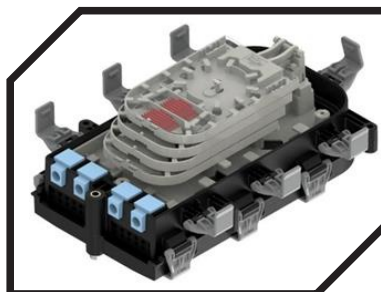
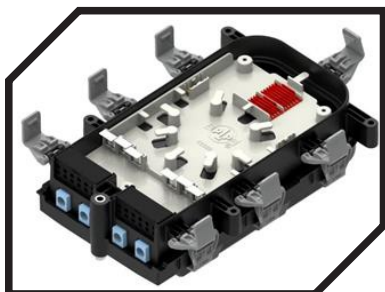
COYOTE® STP-XL Service Termination Point



 **24 -144F Splice Capacity**

 **IP-68**

 **Underground and Aerial Application**





PLP®Fiber Optic Products

COYOTE® STP-XL(SERVICE TERMINATION POINT- XL)

Description

The COYOTE® STP-L is a small scale, cost effective closure which provides an alternative to traditional network interface devices, while offering much greater application flexibility. The closure features a unique design with independent access.

The robust latch system, paired with an integrated overmoulded cover, allows for quick re-entry and creates a secure seal over a wide range of cable profiles.

Key Features:

- Can support up to 16 drops with 2 ports for loop through.
- Constructed from UV-stabilized, flame retardant material.
- Robust latch system paired with factory installed gaskets allows for quick re-entry and re-use.
- Versatile design capable of being configured for Splice, Pre-Con and GPON applications.
- Integrated Splitter facility with dedicated Splice protector holder for 2x Micro PLC Splitters and 2x 40mm Splice Protectors.
- Each Splice tray accommodates 2x interchangeable 12F Splice blocks (Double stack) which can be replaced with a PLC Splitter block (Holds up to 4 Splitters).



Grommet View



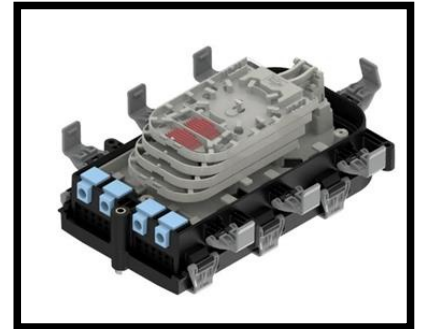
Grommet view



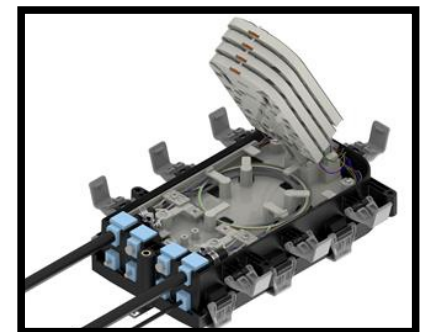
Splice Organizer



Splice Organizer + Splice trays



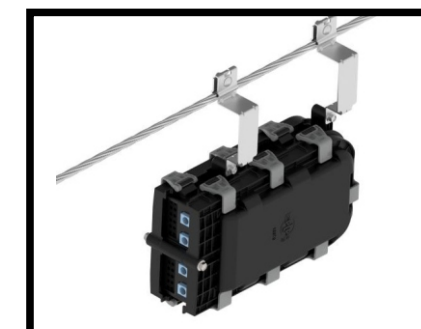
Splice + Adapters



Base + Lid + latches



Base + Lid + Latches







Installation

COYOTE® STP-XL 6 Grommet Design Ordering Instructions










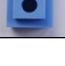
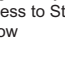
Catalog Number Example: STPXL-6G-48-AAEE-AA

STPXL-6G- XX - XXXX - XX
 (Section 1) (Section 2) (Section 3)
 Must be in
 alphabetical order


Section 1

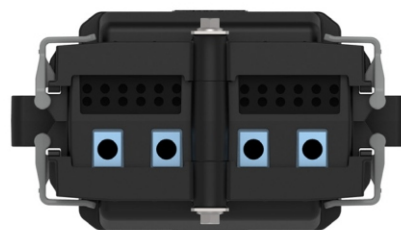
Splice Capacity Selection	
24	
	1 Splice Tray
48	
	2 Splice Trays
72	
	3 Splice Trays
96	
	4 Splice Trays

Section 2

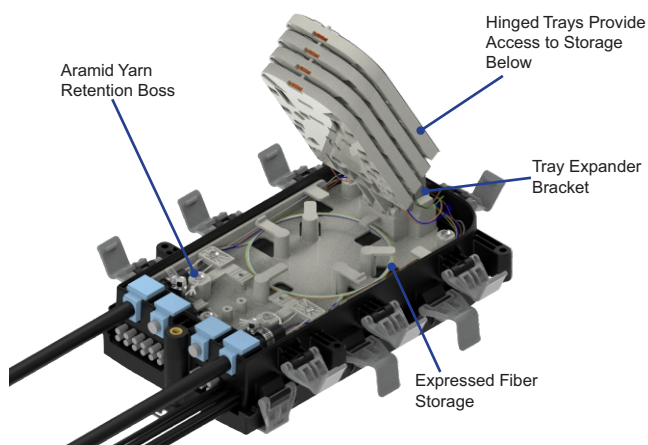
Grommet Selection Select 4	Cable Diameter Range In
A 	SOLID / PLUG 80812437
B 	.170 - .220 (4.3 - 5.6 MM) ROUND CABLES 80812219
C 	.220 - .270 (5.6 - 6.9 MM) ROUND CABLES 80812433
D 	.270 - .320 (6.9 - 8.1 MM) ROUND CABLES 80812220
E 	.320 - .370 (8.1 - 9.4 MM) ROUND CABLES 80812434
F 	.370 - .420 (9.4 - 10.7 MM) ROUND CABLES 80812172
G 	.420 - .470 (10.7 - 11.9 MM) ROUND CABLES 80812435
H 	.470 - .550 (11.9 - 14.0 MM) ROUND CABLES 80812436
J 	.156 - .170 (4.0 - 4.3 MM) ROUND DROP CABLES 80812251
K 	.093 - .125 (2.4 - 3.2 MM) ROUND DROP CABLES 80812400
1 	.2x 2.4 - 3.2 MM Round Drop Cables 1x 6.9 - 8.1 MM Round Cable TLG-1

Section 3

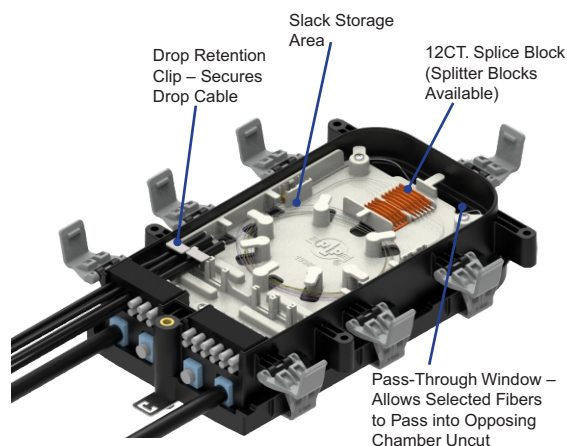
Drop Grommet Selection (Select 2)	Cable Diameter Range
A 	0.185" – 0.200" (4.7 – 5.1 mm) 12 ROUND CABLES



6 Grommet Design End Plate



Splice/Slack Storage Tray



Drop Storage Tray









COYOTE® STP-XL 8 Grommet Design Ordering Instructions

Catalog Number Example: STPX-8G-48-AACCEEHH

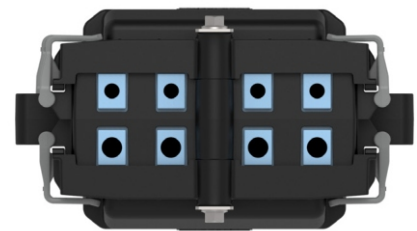
STPX-8G- XX - XXXXXXXX
(Section 1) (Section 2)
Must be in
alphabetical order

Section 1

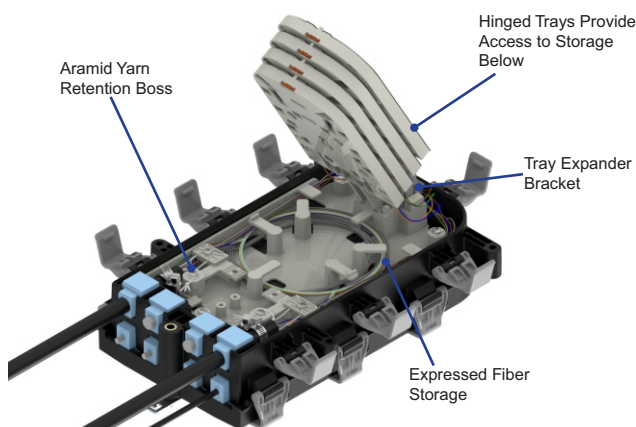
Splice Capacity Selection	
24	 1 Splice Tray
48	 2 Splice Trays
72	 3 Splice Trays
96	 4 Splice Trays
120	 5 Splice Trays
144	 6 Splice Trays

Section 2

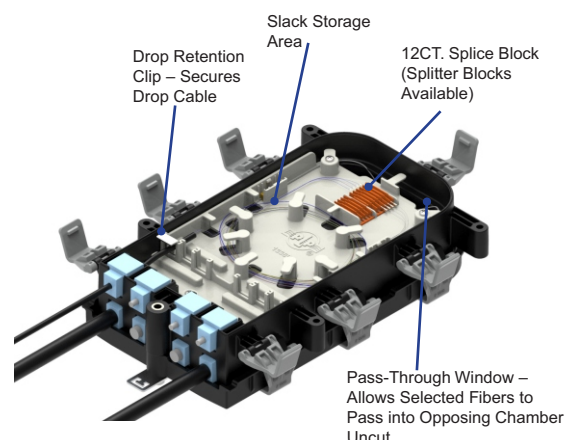
Grommet Selection Select 4	Cable Diameter Range In
A	SOLID / PLUG 80812437
B	.170 - .220 (4.3 - 5.6 MM) ROUND CABLES 80812219
C	.220 - .270 (5.6 - 6.9 MM) ROUND CABLES 80812433
D	.270 - .320 (6.9 - 8.1 MM) ROUND CABLES 80812220
E	.320 - .370 (8.1 - 9.4 MM) ROUND CABLES 80812434
F	.370 - .420 (9.4 - 10.7 MM) ROUND CABLES 80812172
G	.420 - .470 (10.7 - 11.9 MM) ROUND CABLES 80812435
H	.470 - .550 (11.9 - 14.0 MM) ROUND CABLES 80812436
J	.156 - .170 (4.0 - 4.3 MM) ROUND DROP CABLES 80812251
K	.093 - .125 (2.4 - 3.2 MM) ROUND DROP CABLES 80812400
1	.2x 2.4 - 3.2 MM Round Drop Cables 1x 6.9 - 8.1 MM Round Cable TLG-1



8 Grommet Design End Plate



Splice/Slack Storage Tray



Drop Storage Tray

COYOTE[®] STP-XL Specifications

Specifications

Catalog Numbers	6 Grommet Design	8 Grommet Design
Splice Capacity (Maximum)	96	144
Splice Tray Capacity (Maximum)	4	6
Express Capacity (Maximum) – Microtube, Blown Fiber, Buffer Tube	144, 72, 48	144, 72, 48
Grommet Quantity – Splice Chamber, Drop Chamber	4, 2	4, 4
Cable Diameters	0.093" – 0.55" (2.4 – 14 mm)	0.093" – 0.55" (2.4 – 14 mm)
Configuration	Butt	Butt
Application	Aerial, Lashed Messenger, ADSS	Aerial, Lashed Messenger, ADSS
Ingress Protection	IP68	IP68
Size ¹	7.8" W x 11.8" L x 4.4" H (198 x 300 x 112 mm) [2 Shallow Covers]	7.8" W x 11.8" L x 5.3" H (198 x 300 x 135 mm) [1 Shallow and 1 Deep Cover]
Pallet Quantity	72	72

¹Outermost part of the assembly

COYOTE[®] STP-XL Accessories

Catalog Numbers	Description
STPXL-TK-002	Splice Tray Kit – Includes (1) Splice Tray, (1) Splice Tray Cover, [®] (2) LITE-GRIP Retention Blocks for Microtube, (2) 1-Hole LITE-GRIP Retention Blocks, (2) 2-Hole LITE-GRIP Retention Blocks, (2) Splice Blocks, (1) Felt Strip, (1) Pack of Zip Ties
STPXL-EK-001	Splice Tray Expander Kit – Includes (1) Deep Cover, (1) Tray Expander Bracket
7400033	Aerial Hanger Bracket



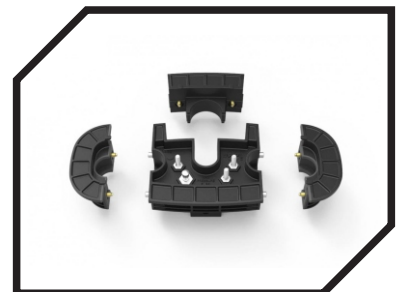
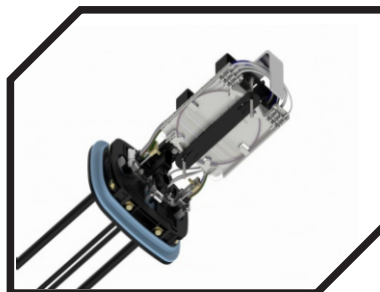
COYOTE® Single Fiber Management System



 **24 -144F Splice Capacity**

 **IP-68**

 **Underground and Aerial Application**





COYOTE® Single Fiber Management System



Preformed Line Products new COYOTE® SFMS, Single Fiber Management System, further expands the capability of the COYOTE Fiber Optics product line. The new system was designed to be compatible with all sizes of the COYOTE Dome Closure series, thus providing network planners with the ultimate flexibility to address network designs with varying degrees of customer density. This modular system design, with options for multiple splice trays, provides the ability to expand closure capacity as customer demand increases. The benefits

of PLP's patented segmented end plate design and its unique grommet sealing system, when combined with the features of the new COYOTE SFMS, provide endless opportunities to adapt your network.



SFMS with Dark Fiber Storage Support Module and Single Element Splice Trays



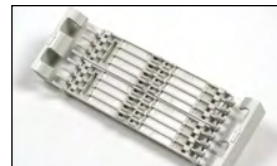
SFMS with Support Module and Single Circuit Splice Trays



Single Element Splice Tray



Single Circuit Splice Tray



Splice Tray Module

Key Features

SFMS Closure Sizes:

COYOTE® ONE Dome Closure (406 mm x 145 mm)
 Dome Closure 6.5" x 17" (218 mm x 453 mm)
 Dome Closure 6.5" x 22" (218 mm x 574 mm)
 Dome Closure 9.5" x 19" (292 mm x 509 mm)
 Dome Closure 9.5" x 28" (292 mm x 749 mm)
 GLC Closure 9.5" x 17" (292 mm x 453 mm)
 GLC Closure 9.5" x 28" (292 mm x 749 mm)

• Cable Port Quantity:

3 in the COYOTE ONE Dome
 4 in the COYOTE 6.5" Dome Closures
 7 in the COYOTE 9.5" Dome & GLC Closures

• Configuration:

Butt/Expressed Splice

• Applications:

COYOTE ONE Dome and Dome Closures – direct buried, below grade, pole/wall mount, or aerial applications.
 COYOTE GLC Closures – pedestal applications and blowing access/ splice point for blown fiber applications

• Sealable, Re-Enterable, and Re-Usable:

Utilizes the same silicone grommet sealing system and segmented end plate design that is found throughout the COYOTE Dome Closure Family

• Modular:

Splice Tray Modules allow you to add splice trays without having to remove previously installed splice trays

• Customizable:

Create the closure that fits your application needs



Splice Tray Support Clip



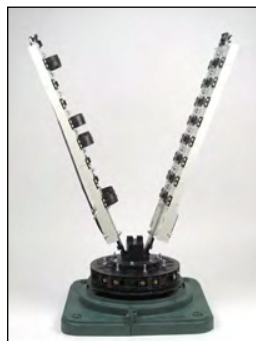
Splice Tray Support Bracket



Splice Tray Cover

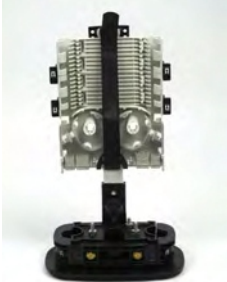







Buffer Tube Storage and Module Alignment Straps








COYOTE®- SFMS Fiber Organizer Selection





COYOTE ONE (406 x 145 mm) Organizer Selections	With Dark Fiber Storage	Without Dark Fiber Storage	
			
Cat. No.	COYSFMS-ONE-001	COYSFMS-ONE-002	3 Port Segmented End Plate





COYOTE 6.5" (218 x 453 mm) Organizer Selections	With Dark Fiber Storage	Without Dark Fiber Storage	
	 Dome		
Cat. No.	COYSFMS-617-001	COYSFMS-617-002	6.5" Port Segmented End Plate - 4 Port

COYOTE Dome 6.5 (218 x 574 mm) Organizer Selections	With Dark Fiber Storage	Without Dark Fiber Storage	
			
Cat. No.	COYSFMS-622-001	COYSFMS-622-002	6.5" Port Segmented End Plate - 4 Port

All Closure Kits Include: (1) end plate with organizer, (1) dome, (1) collar, (1) gasket, (4) strength member brackets, and miscellaneous hardware



COYOTE Dome 9.5" (292 x 509 mm) Organizer Selections	With Dark Fiber Storage		Without Dark Fiber Storage		9.5" Port Segmented End Plate - 7 Port
					
Cat. No.	COYSFMS-919-001		COYSFMS-919-002		

COYOTE Dome 9.5 x 28 (292 x 749 mm) Organizer Selections	With Dark Fiber Storage		Without Dark Fiber Storage		9.5" Port Segmented End Plate - 7 Port
					
Cat. No.	COYSFMS-928-001		COYSFMS-928-002		

COYOTE GLC 9.5 x 17" (292 x 453 mm) Organizer Selections	With Dark Fiber Storage		Without Dark Fiber Storage		9.5" Port Segmented End Plate - 7 Port
					
Cat. No.	COYSFMS-G17-001		COYSFMS-G17-002		

COYOTE GLC 9.5 x 28 (292 x 749 mm) Organizer Selections	With Dark Fiber Storage		Without Dark Fiber Storage		9.5" Port Segmented End Plate - 7 Port
					
Cat. No.	COYSFMS-G28-001		COYSFMS-G28-002		





All Closure Kits Include: (1) end plate with organizer, (1) dome, (1) collar, (1) gasket, (4) strength member brackets, & miscellaneous hardware



COYOTE® Splice Tray Selection Chart

<div>COYOTE FIBER OPTICS</div>		Support Module Type	Tray Module Capacity	Single Circuit Trays		Single Element Trays	
				4 Splice Count - Single Fusion	6 Splice Count - Single Fusion	8 Splice Count - Single Fusion	12 Splice Count - Single Fusion
							
				Catalog Number		80811409	80811933
	Dark Fiber Storage		2	16 Trays 64 Ct.	16 Trays 96 Ct.	8 Trays 64 Ct.	8 Trays 96 Ct.
	No Dark Fiber Storage		3	24 Trays 96 Ct.	24 Trays 144 Ct.	12 Trays 96 Ct.	12 Trays 144 Ct.
ONE Dome 10" x 16" (406 x 155 mm)		COYSFMS-ONE-002					
	Dark Fiber Storage		3	24 Trays 96 Ct.	24 Trays 144 Ct.	12 Trays 96 Ct.	12 Trays 144 Ct.
	No Dark Fiber Storage		4	32 Trays 128 Ct.	32 Trays 192 Ct.	16 Trays 128 Ct.	16 Trays 192 Ct.
Dome 6.5" x 17" (165 x 431 mm)		COYSFMS-617-002					
	Dark Fiber Storage		5	40 Trays 160 Ct.	40 Trays 240 Ct.	20 Trays 160 Ct.	20 Trays 240 Ct.
	No Dark Fiber Storage		6	48 Trays 192 Ct.	48 Trays 288 Ct.	24 Trays 192 Ct.	24 Trays 288 Ct.
Dome 6.5" x 22" (165 x 558 mm)		COYSFMS-622-002					

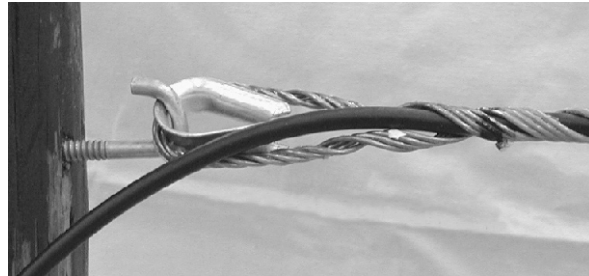
COYOTE® SFMS Accessories

Tray Packs	Catalog Number	Description
	80811409	4ct Single Circuit Tray Pack
	80811933	6ct Single Circuit Tray Pack
	80811934	8ct Single Element Tray Pack
	80811935	12ct Single Element Tray Pack

Tray Accessories	Catalog Number	Description
	80811944	Tray Module Kit - Includes (1) Splice Tray Module, (1) Nut Driver, (1) Buffer Tube Storage Strap, (1) Module Alignment Strap, & (1) Self Tapping Flange Nut
	80811405	Small Parts Bag for SFMS - Includes (1) Splice Tray Cover, (1) Nut Driver, (1) Splice Tray Support Bracket, (1) Splice Tray ID Label for Trays 1-64, & (1) Splice Tray ID Label for Trays 65-128
	80811270	Splice Tray Support Clip



FDE: FIBERLIGN® DEAD END FOR USE ON Short Span ADSS



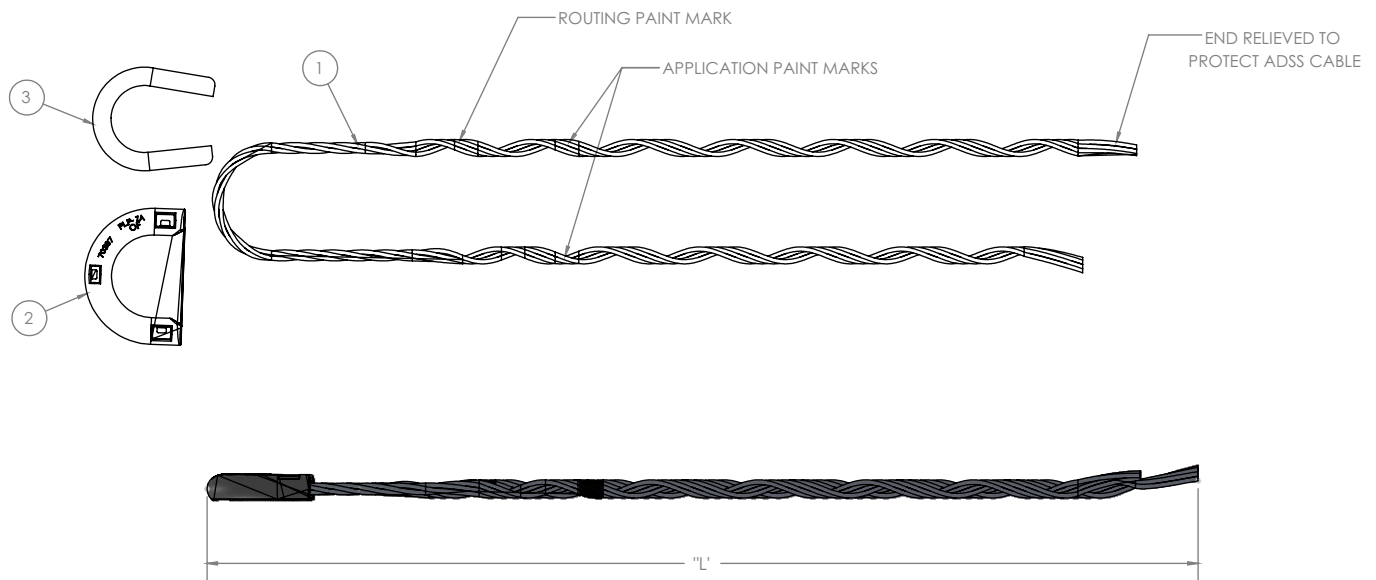
General Recommendations

The Thimble Type Dead End with a pressed steel galvanised thimble is designed for use on SHORT SPAN – MAX. 80 METRES overhead dielectric self-supporting (ADSS) fibre optic cable with polyethylene sheath.

The FIBERLIGN® Dead End product is designed to securely but gently terminate ADSS aerial fibre optic cable by transferring axial tensile load and distributing radial compressive forces through the sheath and onto the internal strength members without damaging the optical fibres.

Specific dead end design and performance depends upon a number of factors such as cable brand and design, strength member construction, sheath type, tension load requirements and temperature and environmental operating conditions. Due to these factors, two types of dead ends are offered as shown in the table and both types are limited to short spans as noted above and NOT RECOMMENDED for use at road/rail/river crossings and in excessive temperature areas.

For other operating conditions and cable types refer to the section “FIBERLIGN® DEAD END WITH STRUCTURAL REINFORCING RODS”.



ITEM NO.	PART NUMBER	DESCRIPTION	QTY.
1	-	DEAD END	1
2	00070397	PLASTIC SNAP ON THIMBLE	1
3	00069019	HDG STEEL THIMBLE	1

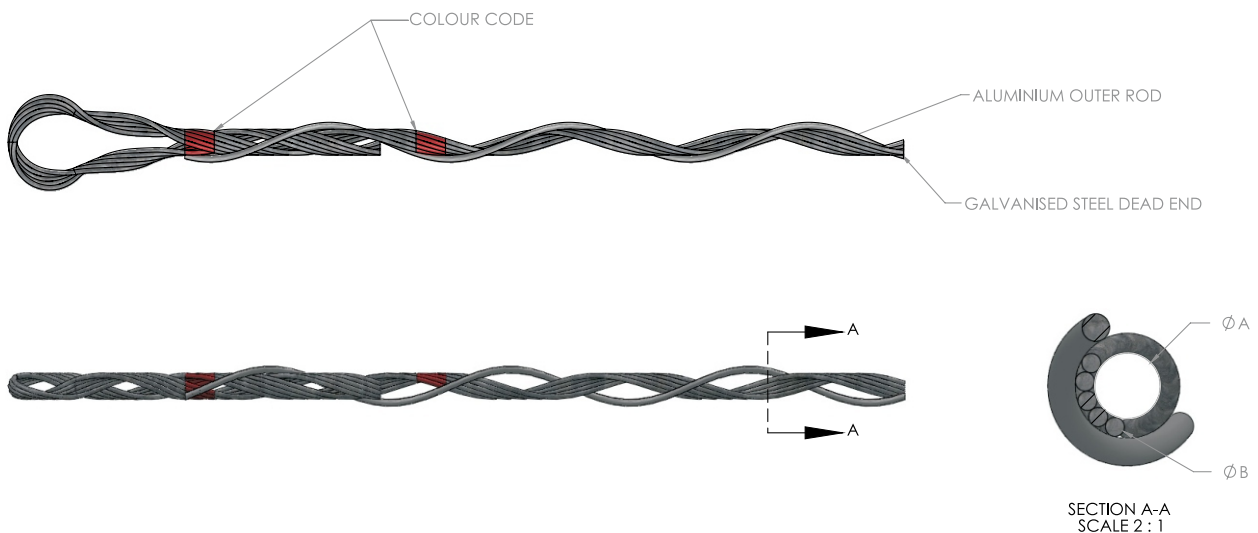
GALVANISED STEEL FITTING FOR MODERATE TENSION MAX. 800KG

CATALOGUE NO.	CABLE DIAMETER (mm)	COLOUR CODE	MASS (kg)	APPROX. LENGTH OF FITTING (L - mm)
FDE0001	3.8 – 4.5	BLACK	0.35	390
FDE0002	4.8 – 6.2	GREEN	0.35	430
FDE0003	6.2 – 7.8	YELLOW	0.38	560
FDE0004	7.8 – 9.5	PURPLE	0.38	660
FDE0005	9.5 – 10.7	WHITE	0.35	725
FDE0006	10.7 – 12.8	ORANGE	0.35	810
FDE0007	12.8 – 15.0	BLACK	0.38	930



FDEM: FIBERLIGN® DEAD END FOR USE ON Microfiber

CAT NO.	FIBER DIAMETER	COLOUR CODE	DIM "A"	DIM "B"
FDEM 134	3.40 mm	YELLOW	2.90 mm	1.63 mm
FDEM 165	4.20 mm	GREEN	3.28 mm	1.63 mm
FDEM 275	6.99 mm	BLUE	5.60 mm	2.34 mm

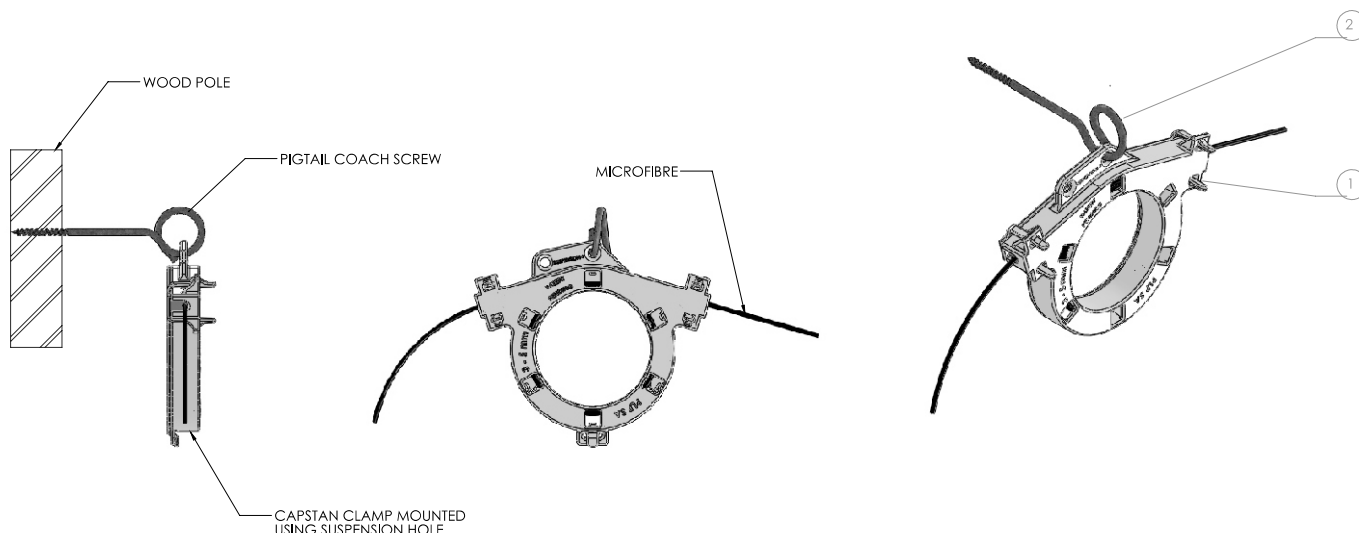


NOTES:

- MATERIAL: GALVANISED STEEL WITH ALUMINIUM OUTER ROD
- FOR TENSIONS UP TO 500N
- OTHER SIZES AVAILABLE ON REQUEST



PCC Plastic Capstan Clamp

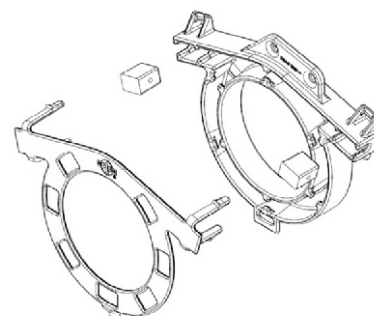


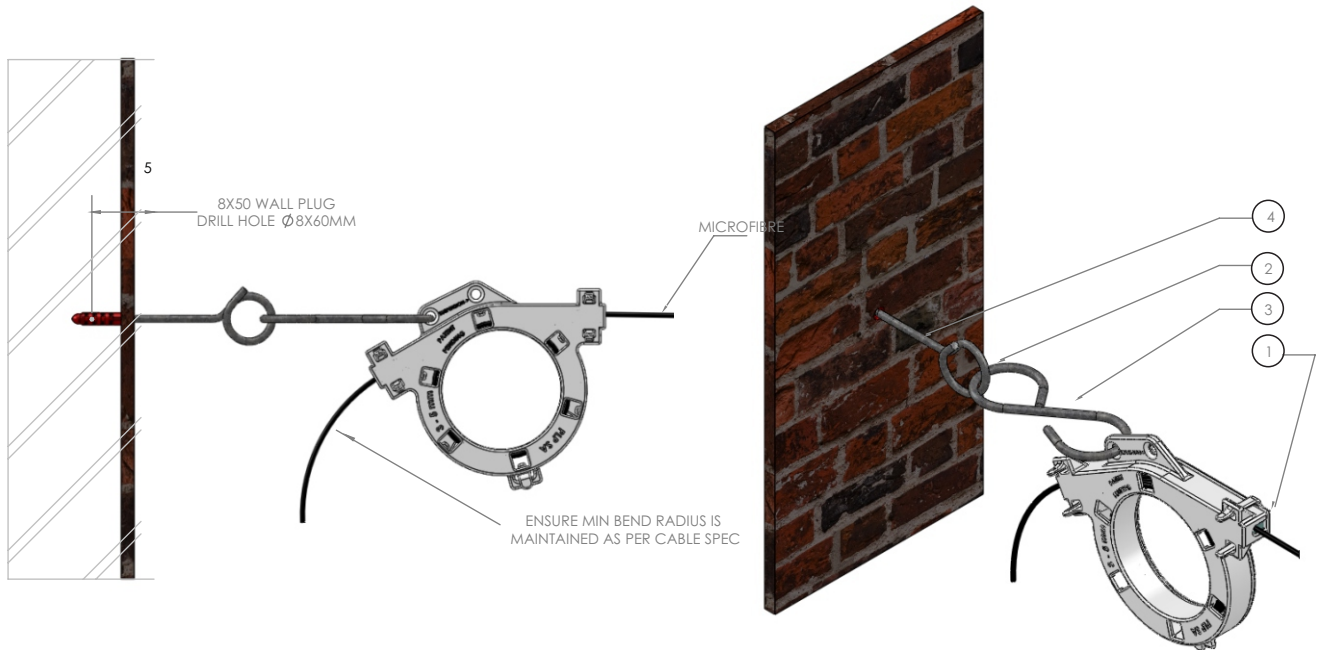
ITEM NO.	PART NUMBER	DESCRIPTION	WEIGHT	MATERIAL	Default Qty.
1	PCC 3-5	PLASTIC CAPSTAN CLAMP FOR TELECOMM	0.15 KG	UV STABLE NYLON	1
2	PTCS-6135	6MM PIGTAIL COACH SCREW 135MM LENGTH	0.043 KG	EN3 STEEL HDG	1

The all new TELECOMS CAPSTAN CLAMP is a multipurpose 3-in-1 clamp designed to support the use of Micro fibre cable used in Fibre to the Home (FTTH) applications. The compact design was developed to Terminate, Suspend and Store Micro fibre cable using the Capstan effect which exponentially increases gripping force per turn. The design reduces any possibility of cable damage and signal losses. The user friendly design requires no tools and is easy to install and reapply.



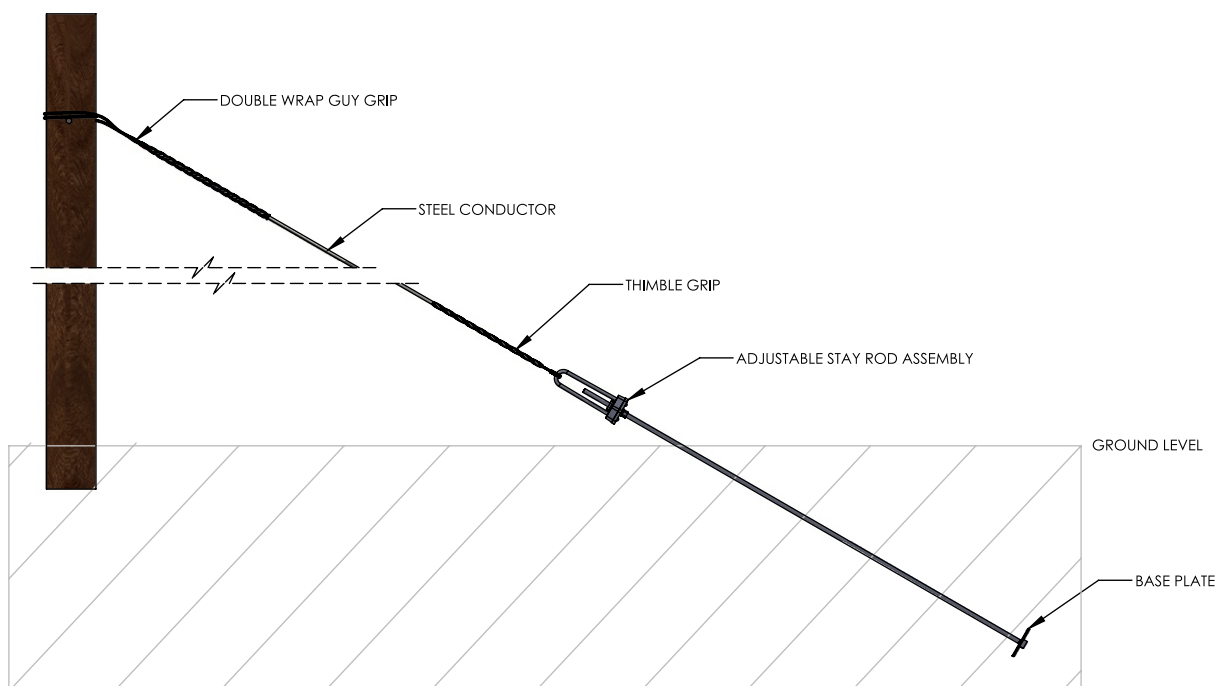
Cable Storage





ITEM NO.	PART NUMBER	DESCRIPTION	WEIGHT	MATERIAL	Default Qty
1	PCC 3-5	PLASTIC CAPSTAN CLAMP FOR TELECOMM	0.15 KG	UV STABLE NYLON	1
2	PTCS-6135	6MM PIGTAIL COACH SCREW 135MM LENGTH	0.043 KG	EN3 STEEL HDG	1
3	SH680	"S" HOOK 6MM DIAMETER X 80MM LENGTH	0.07 KG	MILD STEEL	1
4	WP8	8X50 WALL PLUG TO FIT 8MM HOLE	-	PLASTIC	1

Stay Assembly V1



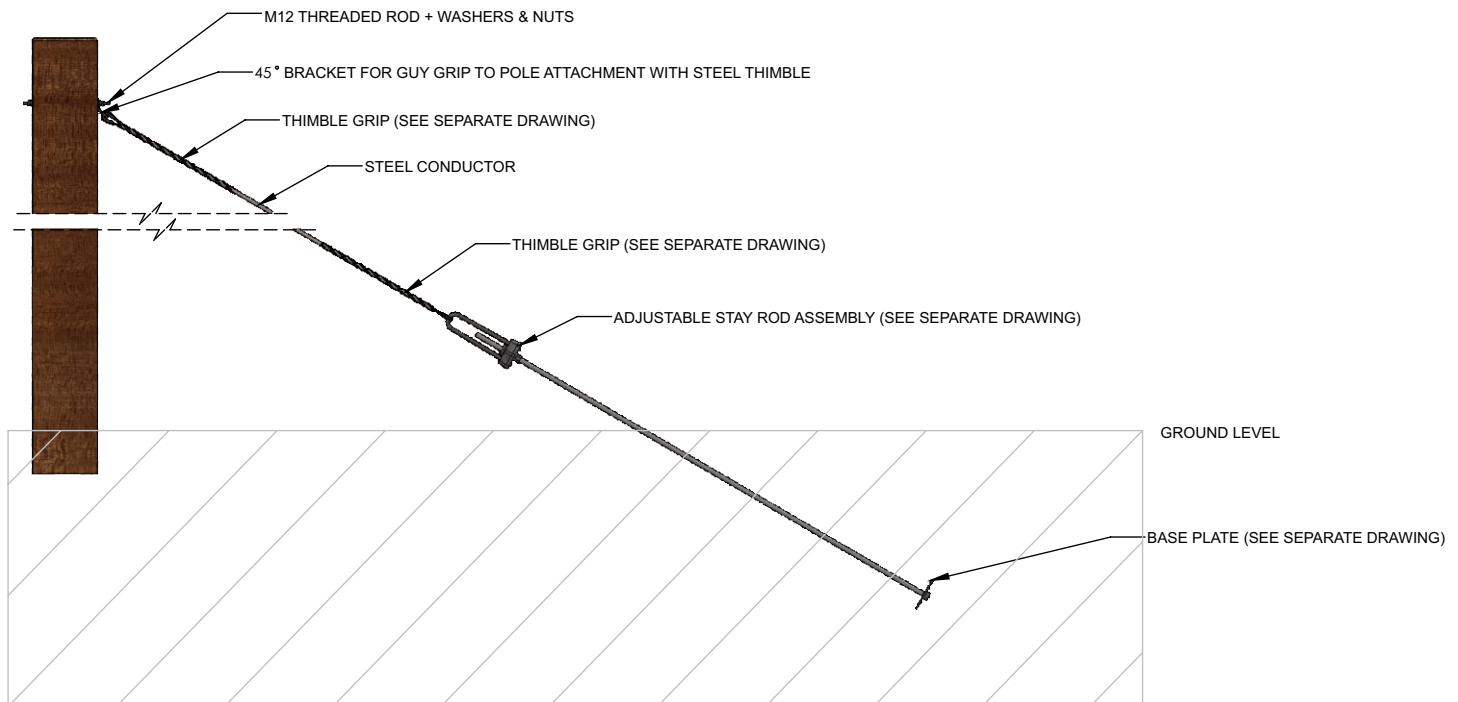
PART NO.	DESCRIPTION
DWGG XXX/XXX	DOUBLE WRAP GUY GRIP- Select size from Table on page TC-34
TGG XXX/XXX	THIMBLE GRIP- Select size from Table on page TC-34
STROD XXXXXX	ADJUSTABLE STAY ROD ASSEMBLY- Select size from Table on page TC-34
BP XXXXXXX	STAY ROD BASE PLATE- Select size from Table on page TC-34

NOTES:

- REPLACE XXX/XXX DIAMETER RANGE TO COVER STAYWIRE SIZE (Refer to DWGG and TGG Table -Pg TC-34)
- VARIOUS STAY ROD SIZES ARE AVAILABLE, CONTACT PLP
- STAY ROD BASE PLATE ORDERED SEPARATELY FROM STAY
- ROD ASSEMBLY, VARIOUS SIZES ARE AVAILABLE



Stay Assembly V2



PART NO.	DESCRIPTION
STROD - XXXXXX	ADJUSTABLE STAY ROD ASSEMBLY- Select size from Table on Page TC-34
TGG XXX/XXX	THIMBLE GRIP- Select size from TGG Table on Page TC-34
M12STUDHDG	M12 THREADED ROD HDG C/W WASHER & NUT
BP XXXXXXXX	STAY ROD BASE PLATE - Select size from Table on Page TC-34
TGGB45A	45 DEGREE BRACKET FOR GUY ATT. ASSEMBLY

NOTES:

- REPLACE XXX/XXX DIAMETER RANGE TO COVER STAYWIRE SIZE (Refer to DWG and TGG Table -Pg TC-37)
- VARIOUS STAY ROD SIZES ARE AVAILABLE, CONTACT PLP
- STAY ROD BASE PLATE ORDERED SEPARATELY FROM STAY
- ROD ASSEMBLY, VARIOUS SIZES ARE AVAILABLE

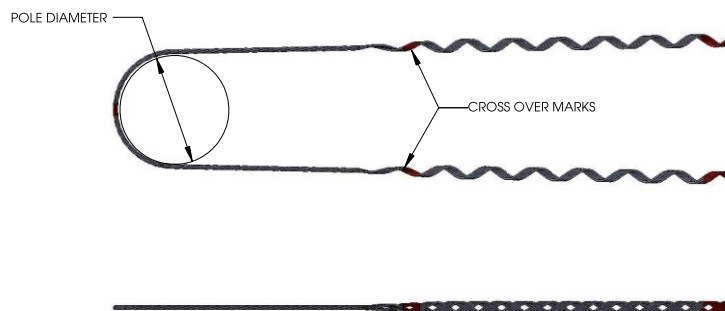


TGG



CATALOGUE NO.	STAYWIRE STRANDING	DIAMETER (mm)	COLOUR CODE
TGG : 201	7/1/70	5.01	BLUE
TGG : 240	7/2.03	6.09	ORANGE
TGG: 250	7/2.12	6.35	GREEN
TGG: 345	3/4.00	8.76	YELLOW
TGG: 432	5/4.00	10.97	BROWN
TGG: 384	4/4.0	9.85	RED
TGG: 396	7/3.35	10.23	BLUE
TGG: 472	7/4.00	10.05	GREEN

DWGG



RIGHT HAND LAY STANDARD

CATALOGUE NO.	STAYWIRES STRANDING	DIAMETER (mm)	COLOUR CODE
DWGG 250-150	7/1.22	150	GREEN
DWGG 250-200	7/2.12	200	GREEN
DWGG 250-250	7/2.12	250	GREEN
DWGG 384-150	7/3.25	150	RED
DWGG 384-200	7/3.25	200	RED
DWGG 396-300	7/3.35	300	BLUE
DWGG 432-150	5/4.00	150	BROWN
DWGG 432-250	5/4.00	250	BROWN
DWGG 480-200	7/4.00	200	GREEN
DWGG 480-250	7/4.00	250	GREEN
DWGG 520-200	19/2.65	200	ORANGE
DWGG 520-250	19/2.65	250	ORANGE

Please advise pole diameter at time of placing the order

STROD

CATALOGUE NO.	STAYWIRE STRANDING	DIAMETER (mm)
---------------	--------------------	---------------

STROD12-138

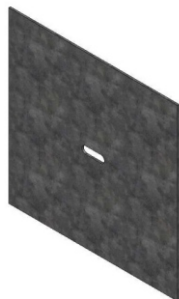
STROD161830

STROD16-LG

STROD24-2400

STROD25-LG

BASEPLATE



CATALOGUE NO.	STAYWIRE STRANDING	DIAMETER (mm)
---------------	--------------------	---------------

Bp1501506

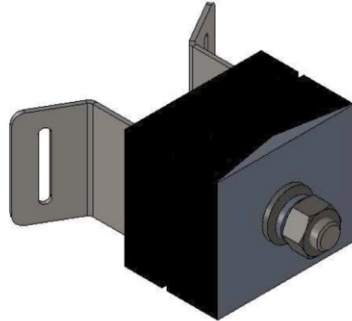
Bp3003005

Bp3803806

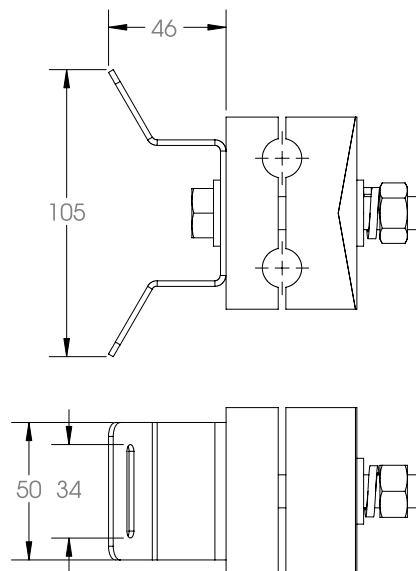
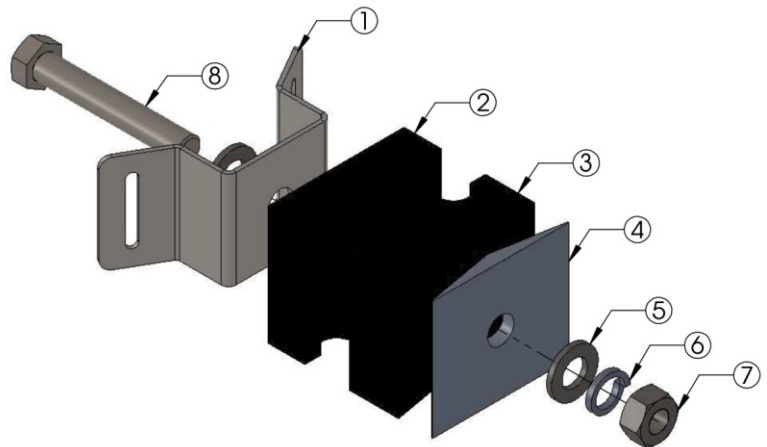
Bp6006006



FIBERLIGN[®] Downlead Cushioned Mono Pole Clamp



ITEM NO.	DESCRIPTION	QTY
1	Monopole Bracket	1
2	Urethane Downlead Cushion	1
3	Urethane Downlead Cushion	1
4	Ext. Al. Cap.	1
5	M12 Stainless Steel Flat Washer	2
6	M12 Stainless Steel Spring Washer	1
7	M12 Stainless steel nut	1
8	M12 x 75 Hex set screw SS	1



CAT NO	RANGE (mm)
DCCMP 374/465	9.5 – 11.8
DCCMP 468/563	11.9 – 14.3
DCCMP 567/657	14.4 – 16.7
DCCMP 661/756	16.8 – 19.2
DCCMP 850/949	21.6 – 24.1

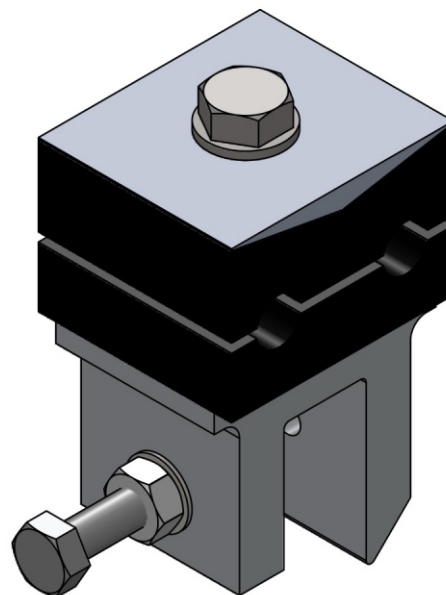
NOTES:

Attachment to be done using stainless steel banding strap
Bolt to be torqued to 60NM

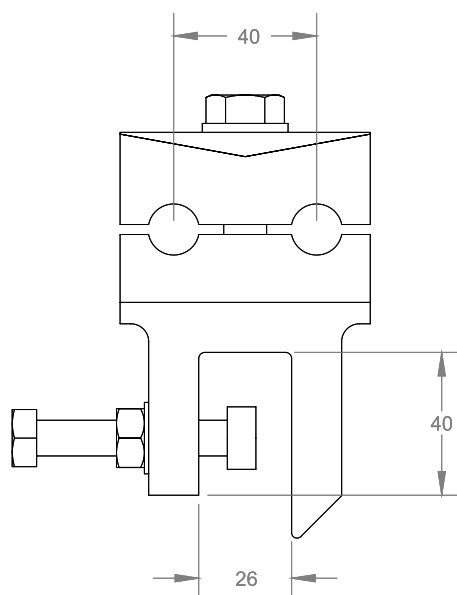
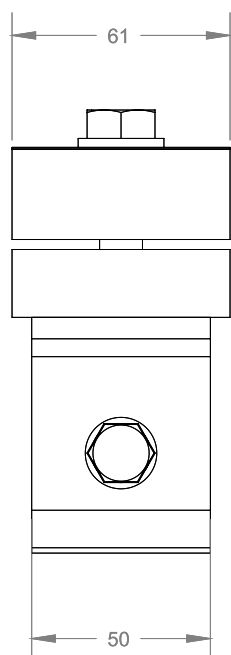
FIBERLIGN® Downlead Cushioned Clamps

The clamp body is made from aluminium alloy, and is designed to clamp onto the angle iron member of steel towers, and to secure OPGW or ADSS downleads to structures while minimising compressive clamping forces which could be transferred to the optical elements.

The fasteners are stainless steel and specially selected for this application. The unit is supplied complete with urethane cushions of the selected size.

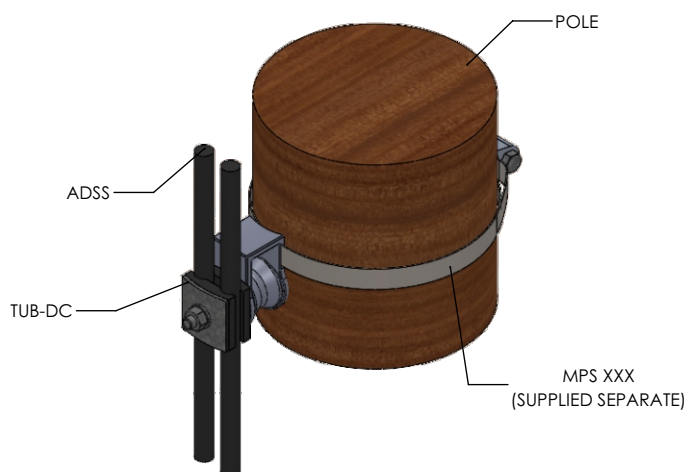


CATALOGUE NO.	DIAMETER RANGE (mm)	
	MIN.	MAX.
DC 8003041	9.5	11.8
DC 8003042	11.9	14.3
DC 8003043	14.4	16.7
DC 8003044	16.8	19.0

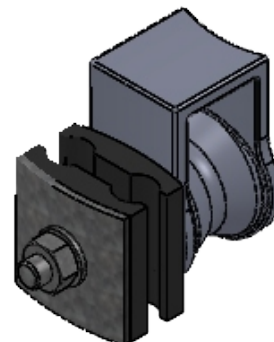




Telecom Universal Bracket- Download Clamp



TUB-DC APPLICATION WITH MPS TO MONOPOLE



TELECOM UNIVERSAL BRACKET - DOWNLOAD CLAMP KIT

ITEM NO.	PART NUMBER	DESCRIPTION	WEIGHT	MATERIAL	QTY.
1	TUB-01	TELECOM UNIVERSAL BRACKET	70 G	NYLON	1
2	TUB-02	RUBBER DOWNLEAD CUSHION	20 G	RUBBER	2
3	CSW 10	CURVED WASHER M10 50X50X3	57 G	STEEL HDG	1
4	M10X80SETHDG	M10 X 80 HEX SCREW HDG	-	8.8 STEEL HDG	1
5	M10WASHHDG	M10 GALVANISED STEEL WASHER	-	8.8 STEEL HDG	1
6	M10NUTHDG	M10 GALVANISED STEEL NUT	-	8.8 STEEL HDG	1

NOTES:

- BRACKET MATERIAL GLASS FILLED UV-STABILISED NYLON
- MAX VERTICAL LOAD ON BRACKET 1.5KN
- FOR ADSS CONDUCTOR SIZES 8-16MM



PREFORMED LINE PRODUCTS

The connection you can count on.

Preformed Line Products
180 Ohrtmann Road
Willowton, Pietermaritzburg
KwaZulu-Natal, South Africa

Mailing Address:

P.O. Box 4015
Willowton Pietermaritzburg, 3200

Telephone: +27 (0) 33 397 5800

Fax: +27 (0) 33 387 7094

Web Site: www.preformed.com/za/

E-mail: sales@preformedsa.co.za

© 2021 Preformed Line Products
Printed in SOUTH AFRICA
CO-CA-08-15-1
09-17-300