



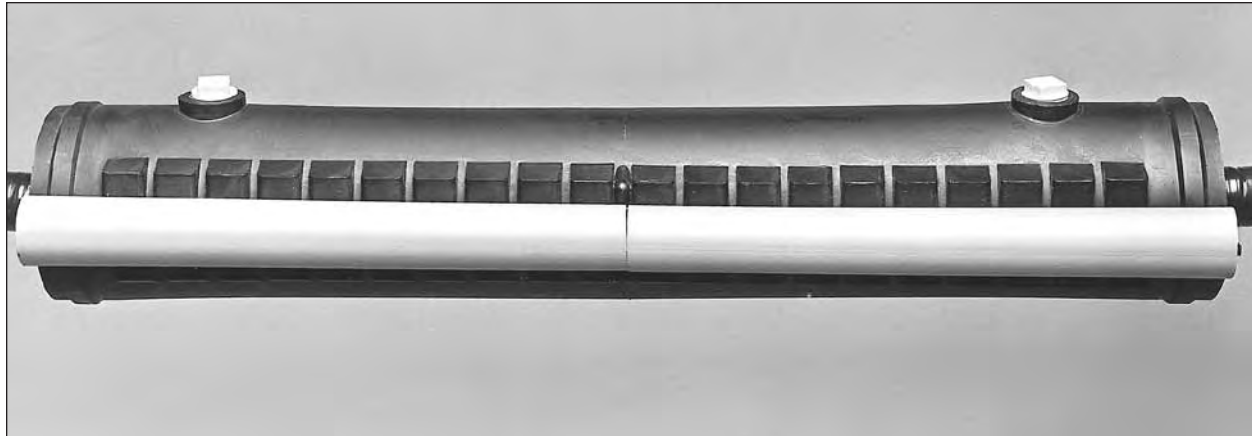
PREFORMED LINE PRODUCTS

Section 11 – REDDI™ Seal & Aerial REDDI Closures

Table of Contents	Page
REDDI Seal	11-2
Aerial REDDI Closure and Heat Shield	11-4
Aerial REDDI Closure	11-5
REDDI Seal and Aerial REDDI Closure	11-6



REDDI™ Seal



Preformed Line Products REDDI™ Seal is designed to be applied to non-pressurized filled cable. It must be filled with resin and will not hold air. REDDI Seal provides a reliable and cost-efficient way to encapsulate splice bundles whether the application is aerial, manhole, or buried. A rugged construction is designed to keep moisture out, prevent cable pull-out, and maintain electrical continuity.

Accommodates Underground, Overhead, and Buried Plant
REDDI Seal accommodates a variety of resin-filled applications where strong cable pull-out strength is a necessity. Ultraviolet stabilizers in the shell resist the effects of ozone and sunlight in aerial plant.



Easily Applied, Easily Re-entered

Holes are easily cut in the End Plates to accommodate a variety of cable diameters and multiple cable entries. These holes can be cut quickly in the field with a Power End Plate Cutter. The one-piece plastic shell is closed without tools by simply sliding the plastic closing clamps over the flange. Re-entry is accomplished by removing the closing clamps, opening the shell, and removing whatever resin is required.

The Reliability of the PREFORMED Splice Case in Plastic Re-enterable Closure.

REDDI Seal utilizes the same basic foam-filled End Plates, torque bar assembly, and End Plate sealing system as the ARMADILLO® Stainless. Many of the accessories and tools are also interchangeable.

It also includes the performance-proven LOCK-TAPE™ Sealing System.

Proper application will seal End Plates and lock them to the cable, which is designed to provide extra strong shear strength and help resist cable pull-out.

Unique End Plate Insert Design

A metallic grounding insert enables the REDDI Seal to be grounded through the End Plates and facilitates aerial applications. Shells can be applied and removed without disturbing the continuity of the ground. Hanger brackets are designed for attachment to the insert, providing strong quick aerial applications.

Durable One-piece Plastic Shell

Durable polyethylene resists the effects of moisture, gas and weather extremes. The closure is designed to remain chemically inert, resist corrosion and cracking, and have good dielectric properties.

Re-enterable Resin

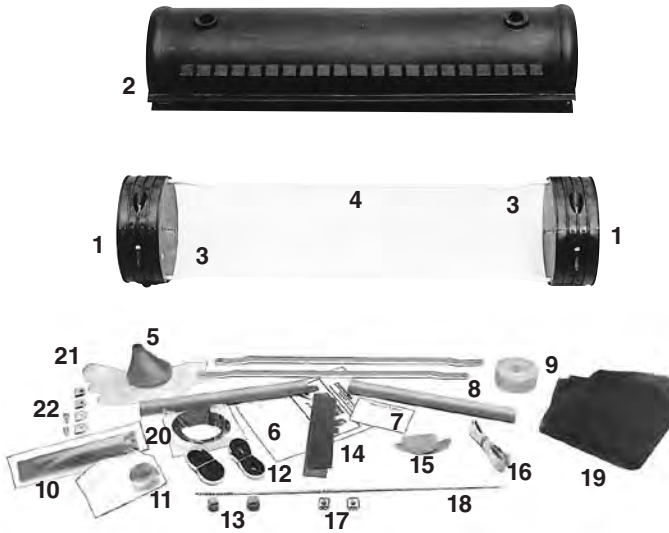
RD Encapsulant or other re-enterable resin pours through entry ports and is sealed with threaded plugs.

Laboratory Tested. Field Tried

Consult with Preformed Line Products for complete testing data.

REDDI™ Seal

(Shown is a REDDI™ Seal kit with bonding.)



The complete REDDI Seal kit is shown. Power End Plate Cutter, vinyl tape, C-Cement, and resin must all be obtained separately.

1. Standard Two-Section End Plates
2. Shell
3. End Plate insert (grounding)
4. Torque bars
5. Funnel
6. Application procedure
7. Cue Card
8. Closing clamps
9. LOCK-TAPE™ Sealant roll
10. End Plate LOCK-TAPE Sealant strips
11. Moisture barrier sealant
12. End seals
13. Threaded plastic plugs
14. Emery cloth (for scuffing sheath)
15. Pair Protectors
16. Cable bonding braid
17. SURE-GRIP™ Shield Connectors
18. CABLE Mea-SURE™ Tape
19. Spacer Mat
20. Flange seal
21. Gloves
22. Bonding clamps

Standard REDDI Seal Catalog Entries*			
Catalog Number* (With Bonding)	Catalog Number (Without Bonding)	Closure Size (mm)	Carton Quantity
8006068	8006143	4.0" x 25.8" (102 x 655)	1
8006085	8006145	6.5" x 28.4" (165 x 721)	1
8006087	8006147	9.5" x 28.4" (241 x 721)	1
8006185	8006216	6.5" x 38.5" (165 x 978)	1
8006227	8006229	9.5" x 38.5" (241 x 978)	1

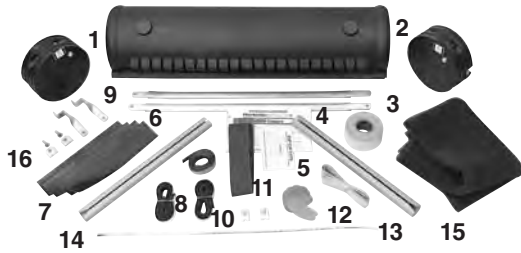
*For variations consult PLP support.

REDDI Seal Parts					
Part Description	For Use With a 4 (102) REDDI Seal (8006068)	For Use With a 6.5 (165) REDDI Seal (8006085)	For Use With a 9.5 (241) REDDI Seal (8006087)	For Use With a 6.5 (165) S-T-R-E-T-C-H REDDI Seal (8006185)	For Use With a 9.5 (241) S-T-R-E-T-C-H REDDI Seal (8006227)
End Plate Kits	8000388	8000389	8000390	8000389	8000390
Torque Bars [2 per closure]	80851245	80850952	80850952	80850985	80850985
Funnel	80802250	80802250	80802250	80802250	80802250
Closing Clamps [2 per closure]	80802176	80802613	80802613	80802136**	80802136**
LOCK-TAPE Supply	8000375	8000376	8000377	8000376	8000378
Moisture Barrier Sealant 1 ft. (305 mm)	80801796	80801796	80801796	80801796	80801796
Plastic Plugs (2 per closure)	80802143	80802143	80802143	80802143	80802143
Emery Cloth [24 strips, 2 x 18] (50 X 457)	8000429	8000429	8000429	8000429	8000429
Spacer Mat [80" roll, 18" x ¼"] (2032 X 457 X 6)	8000658	8000658	8000658	8000658	8000658
Hanger Bracket [2 per closure]	80802510	80802510	80802510	80802510	80802510

**Three closing clamps (per closure) are required.

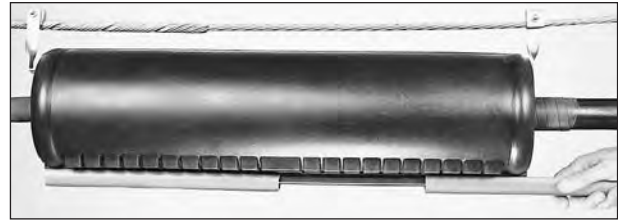


Aerial REDDI™ Closure and Heat Shield



(Shown is an Aerial REDDI™ Closure Kit with bonding.)

- | | |
|------------------------------------|---------------------------------------|
| 1. Standard Two-Section End Plates | 9. Hanger (2) |
| 2. Shell | 10. SURE-GRIP™ Shield Connectors (2) |
| 3. Torque bars | 11. Emery cloth (for scuffing sheath) |
| 4. Application procedure | 12. Pair Protectors |
| 5. Cue Card | 13. Cable bonding braid |
| 6. Closing clamps | 14. CABLE Mea-SURE™ Tape |
| 7. LOCK-TAPE™ Sealant strips | 15. Spacer Mat |
| 8. End seals | 16. Bonding clamps |



The Aerial REDDI Closure is designed specifically for free-breathing aerial use. It utilizes the same performance-proven LOCK-TAPE Sealant System as the PREFORMED Splice Case and the REDDI Seal and the same foam-filled End Plates as the REDDI Seal. A durable one-piece plastic shell with closing clamps is easily applied and re-entered.

A metallic grounding insert enables the REDDI Closure to be grounded through the End Plates and facilitates aerial applications. Shells are applied and removed without disturbing the continuity of the ground. Hanger brackets are designed for attachment to the insert, providing strong, quick aerial application.

Features:

- Designed specifically for free-breathing aerial use.
- Proven LOCK-TAPE Sealant System provides strong cable pull-out protection.
- 6.5" and 9.5" S-T-R-E-T-C-H REDDI Closures are well suited for use as repair closures.
- End Plate insert design grounds through the End Plates and facilitates aerial applications.
- Easily applied and re-entered.

Catalog No.* (With Bonding)	Catalog No. (Without Bonding)	Closure Size (mm)	Carton Quantity
8006170	8006171	4.0" x 25.8" (102 x 655)	1
8006172	8006173	6.5" x 28.4" (76 x 655)	1
8006174	8006175	9.5" x 28.4" (241 x 721)	1
8006183	8006182	6.5" x 38.5" (165 x 978)	1
8006181	8006180	9.5" x 38.5" (241 x 978)	1

*Kit includes SURE-GRIP Shield Connectors and Bonding Braid

PREFORMED™ Heat Shield

The Heat Shield fits easily around the Aerial REDDI Closure. It's designed to dramatically reduce the temperature inside the closure, and protect cable pair insulation from premature degradation in extremely hot environments.

PREFORMED Heat Shield	
Catalog Number	Closure Size (mm)
80804366	4.0 x 25.8 (102 x 655)
80804367	6.5 x 28.4 (165 x 721)
80804368	9.5 x 28.4 (241 x 721)
80804397	6.5 x 38.5 (165 x 978)
80804398	9.5 x 38.5 (241 x 978)



Aerial REDDI™ Closure

LOCK-TAPE™ System

LOCK-TAPE Sealant is supplied for both the cut End Plate and the cable. When properly applied, a gasket-like seal will be formed, locking the End Plate to the cable. LOCK-TAPE Sealant strips and rolls are supplied with the PREFORMED Splice Case Kit, REDDI Seal Kit and REDDI Closure Kit. It is also available in replacement kits or in individual rolls. (Refer to the REDDI Closure Parts chart.)



Two-Section End Plate Kit

Standard Two-Section End Plate Kits with external grounding in the End Plates are available in 4", 6.5" and 9.5" diameter sizes. (REDDI Closure Two-Section End Plate Kits are also interchangeable with the REDDI Seal.)

Three-Section End Plate

Three-Section End Plates with grounding and suspension inserts are also available in 6.5" and 9.5" sizes. Refer to table below for catalog numbers. "Left" and "right" refers to orientation of suspension inserts for Aerial REDDI Closure installations.

These kits are primarily for use as replacement parts when adding branch cable to an existing splice.

Two-Section End Plate Kit includes:

1. Two End Plates with grounding insert
2. LOCK-TAPE Sealant supply
3. Cue Cards
4. CABLE Mea-SURE™ Tape
5. Emery cloth (for scuffing sheath)

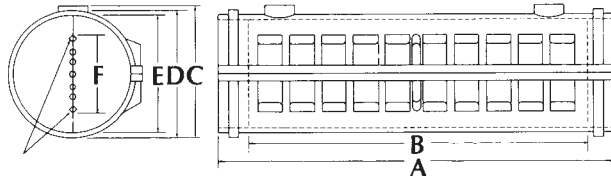
REDDI Closure Parts And Accessories					
Part Description	For use with 4" (102 mm) Diameter (8006170)	For use with 6.5" (165 mm) Diameter (8006172)	For use with 9.5" (241 mm) Diameter (8006174)	For use with a 6.5" (165 mm) S-T-R-E-T-C-H Diameter (8006183)	For use with a 9.5" (241 mm) S-T-R-E-T-C-H Diameter (8006181)
Two-Section End Plate Kits	8000388	8000389	8000390	8000389	8000390
Three-Section End Plate Kits	—	8003094	8003013	—	—
Torque Bar [2 per closure]	80851255	80850968	80850968	80850985	80850985
Closing Clamp [2 per closure]	80802136	80802176	80802176	80802136*	80802136*
LOCK-TAPE Sealant Supply	8000375	8000376	8000377	8000376	8000378
Emery Cloth [24 Strips, 2" x 18"] (50 x 457)	8000429	8000429	8000429	8000429	8000429
Spacer Mat [80 roll, 18" x 1/4"] (3032, 457 x 6)	8000658	8000658	8000658	8000658	8000658
Hanger Bracket [2 per closure]	80802510	80802510	80802510	80802510	80002510

*Three closing clamps (per closure) are required.



REDDI™ Seal and Aerial REDDI™ Closure

Use the following charts to select proper size REDDI Seal and REDDI Closure for splice bundle diameter, cable opening and End Plate cable capacity.



F. Marks on End Plates denoting area for cable entrance holes.

Cable Opening Chart (mm)	
REDDI Seal/ Closure Diameters	*Maximum Cable Opening
4.0 x 25.8 (102 x 655)	16.5" (419)
6.5 x 28.4 (165 x 721)	19.0" (483)
9.5 x 28.4 (241 x 721)	18.0" (457)
6.5 x 38.5 (165 x 978)	29.0" (737)
9.5 x 38.5 (241 x 978)	28.0" (711)

Maximum End Plate Cable Capacity* (mm)				
REDDI Seal/Closure Size	1 Cable	2 Cables	3 Cables	4 Cables
4.0" x 25.8" (102 x 655)	2.2" (56)	1.95" (50)	1.70" (43)	1.45" (37)
6.5" x 28.4" (165 x 721)	4.1" (104)	3.85" (98)	3.60" (91)	3.35" (85)
9.5" x 28.4" (241 x 721)	7.1" (180)	6.85" (174)	6.60" (168)	6.35" (161)
6.5" x 38.5" (165 x 978)	4.1" (104)	3.85" (98)	3.60" (91)	3.35" (85)
9.5" x 38.5" (241 x 978)	7.1" (180)	6.85" (174)	6.60" (168)	6.35" (161)

*Always allow 1/4" (6.4 mm) clearance between cable holes. This clearance is allowed for in the above charts. These dimensions indicate the maximum combined cable diameters that can be accommodated in one end of the entire splice closure.

Case Dimensions (mm)						
REDDI Seal/ Closure Size	A	B	C	D	E	F
4.0" x 25.8" (102 x 655)	25.8" (655)	20.3" (516)	4.6" (117)	4.4" (112)	4.0" (102)	2.2" (56)
6.5" x 28.4" (165 x 721)	28.4" (721)	22.7" (567)	7.1" (180)	6.8" (173)	6.5" (165)	4.1" (104)
9.5" x 28.4" (241 x 721)	28.4" (721)	21.7" (551)	10.1" (257)	9.8" (249)	9.5" (241)	7.1" (180)
6.5" x 38.5" (165 x 978)	38.5" (978)	32.8" (833)	7.1" (180)	6.8" (173)	6.5" (165)	4.1" (104)
9.5" x 38.5" (241 x 978)	38.5" (978)	31.8" (808)	10.1" (257)	9.8" (249)	9.5" (241)	7.1" (180)

REDDI Seal Resin Capacity (mm)		
REDDI Seal Diameters	Resin	
	Grams ⁽¹⁾	Grams ⁽²⁾
4.0" x 25.8" (102 x 655)	4,200	3,780
6.5" x 28.4" (165 x 721)	12,300	11,070
9.5" x 28.4" (241 x 721)	25,000	22,500
6.5" x 38.5" (165 x 978)	17,800	16,020
9.5" x 38.5" (241 x 978)	36,800	33,120

⁽¹⁾ Amount of resin required to fill entire closure without splice.

⁽²⁾ Recommended amount of resin assuming 10% of closure is occupied by splice.

REDDI™ Seal and Aerial REDDI™ Closure



Re-entry Kits

When re-entry of the REDDI Seal is required, a separate kit must be purchased to assure a proper seal. Kits are available for all four diameter sizes of REDDI Seal: 4", 6.5" and 9.5" (standard and S-T-R-E-T-C-H). Re-entry kits are not interchangeable with the REDDI Closure.

Kit includes:

1. End seal
2. LOCK-TAPE Sealant supply
3. Flange seal
4. Cue Cards
5. Funnel
6. Disposable plastic gloves
7. Closing clamps

LOCK-TAPE System

LOCK-TAPE Sealant is supplied for both the cut End Plate and the cable. When properly applied, a gasket-like seal will be formed, actually locking the End Plate to the cable. LOCK-TAPE Sealant strips and rolls are supplied with the PREFORMED Splice Case Kit, REDDI Seal Kit and REDDI Closure Kit. It is also available in replacement kits or in individual rolls. (Refer to the REDDI Seal Parts chart.)

REDDI Seal Re-entry Kits	
Catalog Number	REDDI Seal/Closure Size (mm)
8003020	4" x 25.8" (102 x 655)
8003021	6.5" x 25.8" (165 x 655)
8003022	9.5" x 25.8" (241 x 655)
8003030	6.5" x 38.5" (165 x 978)
8003057	9.5" x 38.5" (241 x 978)