



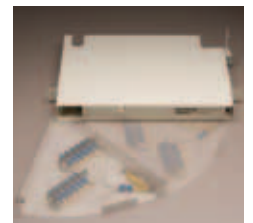
PREFORMED LINE PRODUCTS
The connection you can count on.

**COYOTE® AXCESS SOLUTIONS™
PRE-TERMINATED WALL &
RACK MOUNT CABINETS**



-  COMMUNICATIONS
-  ENERGY
-  SPECIAL INDUSTRIES
-  SOLAR

COYOTE®
FIBER OPTICS



PLP Fiber Optic Products

COYOTE® PRE-TERMINATED CABINETS CUSTOMIZED TO MEET YOUR NEEDS



Pre-terminated solution shown above (see following pages to order your pre-terminated solutions)



RDC2 with pivoting shelf



RDC6 rear view



RDC6 front view

Features & Benefits

- Ready for splicing right out of the carton
- Cabinets are made from rugged 16 gauge steel
- Durable powder-coat finish
- Available in two colors - Almond or Black
- Accepts craft-friendly COYOTE splice trays
- Integral fiber storage
- High-density splicing and patching in single cabinet
- Assembled to your exact specifications
- 100% inspected
- Designed to provide substantial labor savings
- UPC or APC fiber polishes
- Color coded pigtailed

Wall Mount Cabinets

- Provides protected fiber splicing and connectivity
- Lockable inner door secures the splicing compartment
- Each cabinet may be ordered with adapter modules or pre-terminated to your exact specification
- Installation and mounting hardware included

Wall Mount Cabinets (Empty)

Catalog Number	Description	Height (mm)	Width (mm)	Depth (mm)	Splice Tray Options
WDC2_*	Wall Mount Cabinet up to 24 Fiber Connections and Splices**	10 (254)	13 (330)	3.5 (89)	80807701 80806033 80807114
WDC4_*	Wall Mount Cabinet up to 48 Fiber Connections and Splices**	14 (356)	13 (330)	3.5 (89)	80807701 80806033 80807114 8003468
WDC8_*	Wall Mount Cabinet up to 96 Fiber Connections and Splices**	17 (432)	13 (330)	5.5 (140)	8001127 80805514 80805515
WDC12_*	Wall Mount Cabinet up to 144 Fiber Connections and Splices**	12 (305)	17 (432)	11.0 (279)	8001127 80805514 80805515

* Wall Mount Cabinets A for Almond or B for Black

Rack Mount Cabinets

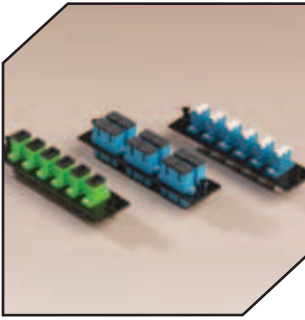
- Universal mounting brackets to fit 19" or 23" racks
- Clear front door and access panels are removable for easy entry
- Key hole slots for optional wall mounting
- Each cabinet may be ordered with adapter modules or pre-terminated to your exact specification

Rack Mount Cabinets (Empty)

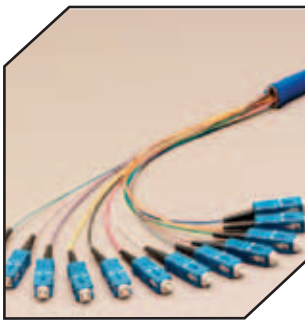
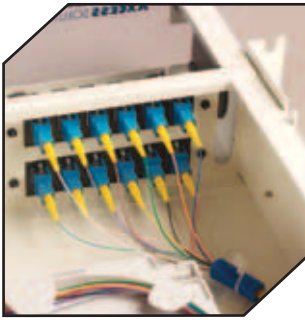
Catalog Number	Description	Rack Units	Width (mm)	Depth (mm)	Splice Tray Options
RDC2_*	Rack Mount Cabinet up to 12 Fiber Connections and Splices	1	17 (432)	14 (356)	80807701 80806033
RDC3_*	Rack Mount Cabinet up to 36 Fiber Connections and Splices**	2	17 (432)	14 (356)	8001127 80805514 80805515
RDC6_*	Rack Mount Cabinet up to 72 Fiber Connections and Splices**	2	17 (432)	14 (356)	8001127 80805514 80805515
RDC12_*	Rack Mount Cabinet up to 144 Fiber Connections and Splices**	3	17 (432)	14 (356)	8001127 80805514 80805515
RDC24_*	Rack Mount Cabinet up to 288 Fiber Connections and Splices**	8	17 (432)	14 (356)	8001127 80805514 80805515

* Rack Mount Cabinets A for Almond or B for Black

** Only with Duplex Adapters



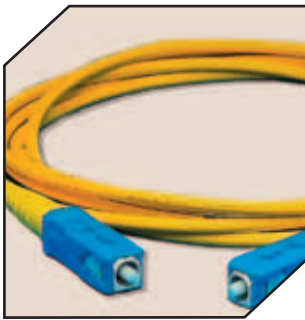
Adapter modules



Pigtail Assemblies



RDC6 with cable stub



Jumper Cable Assemblies

PLP Fiber Optic Products

COYOTE® PASSIVE OPTICAL COMPONENTS

Adapter Modules

Modular Plates fit any COYOTE cabinet and offer the ultimate in design flexibility.

- 6-port, 8-port and 12-port snap-in Adapter Plates
- Precision ceramic alignment sleeves

Adapter Modules			
Catalog Number	Connector	Adapters	Sleeve
6SMSC	SC	6	Ceramic
6SCAPC	SC/APC	6	Ceramic
12SMDSC	SC	12 (6 Duplex)	Ceramic
12SMDSCA	SC/APC	12 (6 Duplex)	Ceramic
8SMSC	SC	8	Ceramic
6SMST	ST	6	Ceramic
8SMST	ST	8	Ceramic
6SMFC	FC	6	Ceramic
8SMFC	FC	8	Ceramic
6FCAPC	FC/APC	6	Ceramic
6SMLC	LC	6 (3 Duplex)	Ceramic
12SMLC	LC	12 (6 Duplex)	Ceramic
600	Blank Plate	-	-

Pigtail Cable Assemblies

- Six or twelve color-coded 900 Micron fiber bundles
- Single mode in yellow braided sleeving and Multimode in orange
- Ribbon fan outs
- Jacketed cable stubs also available

	Factory Polishes	
	Return Loss	Insertion Loss
UPC	-55 dB min	0.2 typ 0.3 max
APC	-65 dB min	0.3 max

- Contact PLP for additional options

Jumper Cable Assemblies

- High Performance Singlemode Fiber Optic Jumpers feature UPC or APC terminations
- 100% tested for Insertion/Return loss and visually inspected
- 2mm or 3mm Jacketed Cables available
- Multimode components are available
- Contact PLP for other options

Pigtail Cable Assemblies - Bundled 900 Micron Fibers in Yellow Sleeve		
Catalog Number	Connector	Fiber Count
P6SCU_*	SC/UPC	6
P12SCU_*	SC/UPC	12
P6SCA_*	SC/APC	6
P12SCA_*	SC/APC	12
P6ST_*	ST	6
P12ST_*	ST	12
P6FC_*	FC	6
P12FC_*	FC	12
P6LC_*	LC	6
P12LC_*	LC	12

* Cable length in meters

Jumper Cable Assemblies - 3 mm Jacketed	
Catalog Number	Connector
JSCU_*	SC/UPC
JSCA_*	SC/APC
JST_*	ST
JFC_*	FC
JLC_*	LC

* Cable length in meters









PLP Fiber Optic Products

COYOTE® PASSIVE OPTICAL COMPONENTS

COYOTE Splice Trays

User friendly splice trays for all applications. Seven types of standard splice trays are available: five for single fiber splices and two for ribbon fiber splices. These injection-molded trays have hinged, clear plastic covers for maximum fiber protection that still allow for visible inspection of the fibers. A series of removable tabs along the tray perimeter simplify routing and storage of the fiber.

Cabinet vs. Splice Tray Capacity

		Wall Mount Cabinets				Rack Mount Cabinets				
Part Number/Description		WDC2	WDC4	WDC8	WDC12	RDC2	RDC3	RDC6	RDC12	RDC24
	80807701 12 Count Low Profile Splice Tray Kit	2	2	-	-	1	-	-	-	-
	80806033 12 Count Standard Splice Tray Kit	2	2	-	-	1	-	-	-	-
	80809958 24 Count Low Profile Splice Tray Kit	-	-	-	-	1	-	-	-	-
	80807114 72 Count Ribbon Tray	1	1	-	-	-	-	-	-	-
	8003468 24 Count Low Profile Tray for single fusion splices	-	2	-	-	-	-	-	-	-
	8001127 36 Count Low Profile Splice Tray	-	-	6	9	-	3	3	6	12
	80805514 36 Count Standard Splice Tray Kit	-	-	4	6	-	2	2	4	8
	80805515 144 Count Ribbon Splice Tray with fixed slots	-	-	2	3	-	1	1	2	4



PREFORMED
LINE PRODUCTS

World Headquarters
660 Beta Drive
Cleveland, Ohio 44143

Mailing Address:
P.O. Box 91129
Cleveland, Ohio 44101

Telephone: 440.461.5200
Fax: 440.442.8816
Web Site: www.preformed.com
E-mail: inquiries@preformed.com

© 2011 Preformed Line Products
Printed in U.S.A.
CO-SS-1019-4
10.11.1M

Pre-terminated Cabinets

Ordering is as easy as 1-2-3!

When ordering standard COYOTE Pre-terminated Cabinets, follow these easy steps

1. Select the type of cabinet

i.e., RDC24A __ __

Almond Rack Mount Cabinet with 24 slots for up to 288 connections (24 x 12)

2. Select number of fiber adapters or ports

i.e., RDC24A96 __

Loaded with 96 adapters (standard 6 port modules)

3. Select fiber connector style and length of pigtails

i.e., RDC24A96SCU3

SMSC UPC polish 3 meter length Pigtails

Standard Splice Trays will be included.

Contact a PLP sales representative for assistance with other pre-terminated cabinet options.