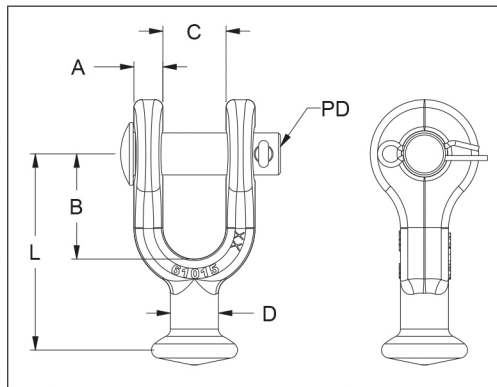
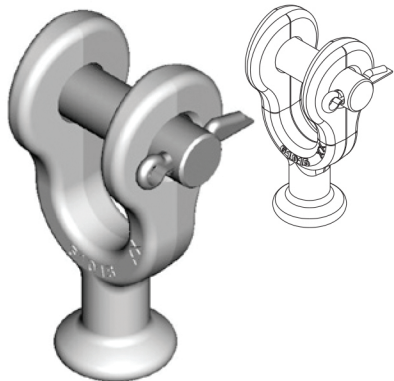


Ball Clevis



Features	
Body	Forged steel, hot dip galvanized
Hardware	Galvanized Steel
Cotter Pin	Stainless Steel

Catalog Number	General Dimensions inches (mm)						For Use with Insulators per ANSI Class Spec. C-29.2-71	Vertical Ultimate Strength lbf (kN)	Wt. Per 100 Units lbs (kg)
	A	B	C	D	L	PD			
BC-30	7/16 (11)	1-9/16 (39.7)	15/16 (24)	11/16 (18)	2-15/16 (74)	5/8 (16)	52-3 and 52-5	30,000 (133)	125 (57)
BC-50	5/8 (16)	1-15/16 (49.2)	15/16 (24)	7/8 (22.6)	4-3/8 (111)	3/4 (19)	52-8 and 52-11	50,000 (222)	330 (149)

For bolt, nut, and cotter in place of clevis pin and cotter, add BNK to the catalog number (Ex: BC-30BNK).