

PLP Company Overview

The connection you can count on



About Us

PLP (Preformed Line Products) is an Australian manufacturing company that has been supplying products to the electricity, telecommunication, cable television and data network industries as well as specialised niche markets since 1961.

PLP's extensive product range, technologies and services help build, protect, and maintain critical infrastructure by creating stronger and more reliable networks.

PLP is a designer, manufacturer and supplier of high-quality cable anchoring and control hardware systems for supporting, protecting, terminating, and splicing transmission and distribution lines.

Inventiveness, integrity, and foresight are the foundations of PLP, and the company continues to improve utility networks by creating innovative new products for the industries we serve.



PLP Australia

PLP's local manufacturing and engineering facility has an on-site NATA Accredited Testing Laboratory.

The advanced manufacturing facility includes wire forming, forging, casting, plastic moulding and extrusion, sheet metal work, powder coating and an area for assembling products ready for delivery and installation.

The facility also has a modern tool room equipped with the latest CNC vertical machining centres, modern turret punches and a powder coating area.

Experienced engineers provide technical support and inspection services with in-depth data analysis, utilising unmanned aerial inspection vehicles.

A dedicated team of on-site customer service and industry experienced external sales professionals assist customers throughout the ordering process from initial project costing to on time delivery.

PLP Australia's industry professionals provide the most comprehensive solution for period contracts and projects.

PLP Global

PLP was established in Ohio, USA in 1947 and is a recognised global leader with locations in over 20 countries.

PLP works as a united global corporation, delivering high-quality products and unparalleled service to customers around the world.

International operations provide products uniquely suited to meet the needs of the local customers. Commitment to technical innovation, outstanding product performance and exceptional customer service are the hallmarks of PLP's success.

PLP supplies products and services for:

- Energy Distribution
- Energy Transmission
- Telecommunications
- Substations
- Switchgear
- Insulators
- Underground Solutions
- Product training
- NATA Accredited Testing Laboratory
- Electrical and Mechanical Testing



Energy Distribution

As a leading manufacturer of fittings for bare and insulated overhead distribution lines and underground systems for power and railway networks, PLP supports energy and rail transit companies throughout the Asia Pacific region.

PLP also manufactures and stock an extensive range of conductor fittings and accessories.

Energy Transmission

PLP has experience designing, manufacturing, and supplying overhead line hardware and fittings for the High Voltage electrical industry.

PLP Australia has established itself as a respected supplier throughout the Asia Pacific region supplying products for overhead transmission line projects in voltages up to 500kV.

Through diverse manufacturing capabilities and strategic alliances, PLP is able to offer a total supply package for transmission line hardware and accessories.

Telecommunications

PLP provides products and services for all areas of the telecommunications industry.

Products include telecommunication network operators, cable television and broadband service providers, corporate business networks, government departments and educational institutions.

PLP manufactures innovative product solutions including the COYOTE® fiber optic splice closures, organisers and trays and the ARMADILLO® copper splice closures and accessories.

Substations

PLP is a leading manufacturer and supplier of integrated substation busbar systems.

The PLP process from design and estimation to manufacture and testing, ensures a high quality, reliable substation from experienced engineers.

PLP's substation product range caters for all standard tube sizes with wall sections from 3mm to 12mm. The range includes connectors, clamps, and hardware for tubular aluminium busbars in both bolted and welded solutions.

AEM Switchgear

AEM Switchgear is manufactured in Australia and has a reputation for high-quality, reliability, safety, easy installation and on time delivery.

The switchgear can be delivered flat-packed, partially, or fully assembled. AEM switchgear is designed for remote automatic operation and can be integrated with earth switches.

PLP's local engineering team provides technical support and can custom design structure heights, spacing and insulator configurations to suit site and operation standards.

Insulators

PLP supplies insulators designed and tested to meet the dimensional, electrical, and mechanical requirements of the Australian and IEC standards.

PLP provides Porcelain and Polymeric insulators for electrical transmission, distribution, substation, and all other applications. PLP also supplies a range of low voltage and medium voltage distribution insulators.

Underground Solutions

PLP supplies a range of underground products and accessories for the energy and telecommunication industries. The range includes electrical products, turrets, bases, panels, and connection pits.

PLP is a distributor for the Cellpack and Michaud ranges of underground cable connecting products.

PLP Training

PLP offers training for customers focusing on the application and installation of PLP's products.

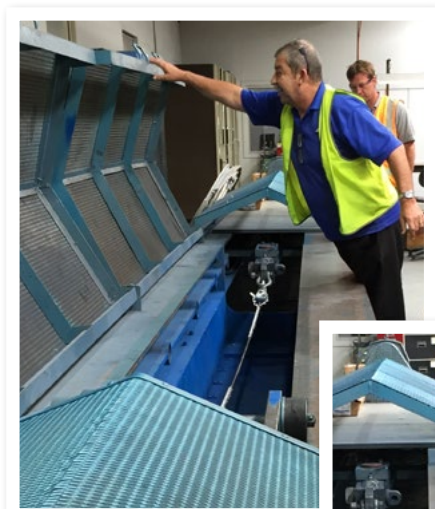
The training can be conducted at PLP's facility in Glendenning, NSW or in the customer's location. All training is free and suited to all skill levels.

Electrical and Mechanical Testing

At PLP the engineering department is not only responsible for design and product development, but also ensuring quality standards meet NATA and ISO accreditation.

Manufacturing processes are monitored, audited, tested, and continuously improved, based on statistical information.

The NATA Accredited Testing Laboratory utilises calibrated equipment to test tensile loads from 1N to 500kN, industrial hardness, galvanising, fatigue testing and heat cycling for overhead conductors.



PLP Sales Team

PLP has a dedicated customer focused sales team. The sales team comprises external field sales and internal customer support.

The external sales team provides customers with technical information and pricing. They work closely with their respective clients to provide solutions to meet their needs.

The external sales professionals provide sales support for an extensive product range and have many years of experience in the utility, contractor, distributor, and industrial markets.

The internal customer support team manages the requirements of the customer on a daily basis. They support the external sales team with customer orders and ensure the orders are delivered on time.

PLP Production Team

PLP Australia understands that to be a market leader we need to be resourceful and innovative in all facets of the business.

To achieve this competitive advantage, PLP has a fully integrated Management Information System incorporating Material Requirements Planning (MRP) and production scheduling.

The manufacturing systems supporting this objective, are CAD, CAM, and CNC processes, global procurement with other international PLP subsidiaries, commitment

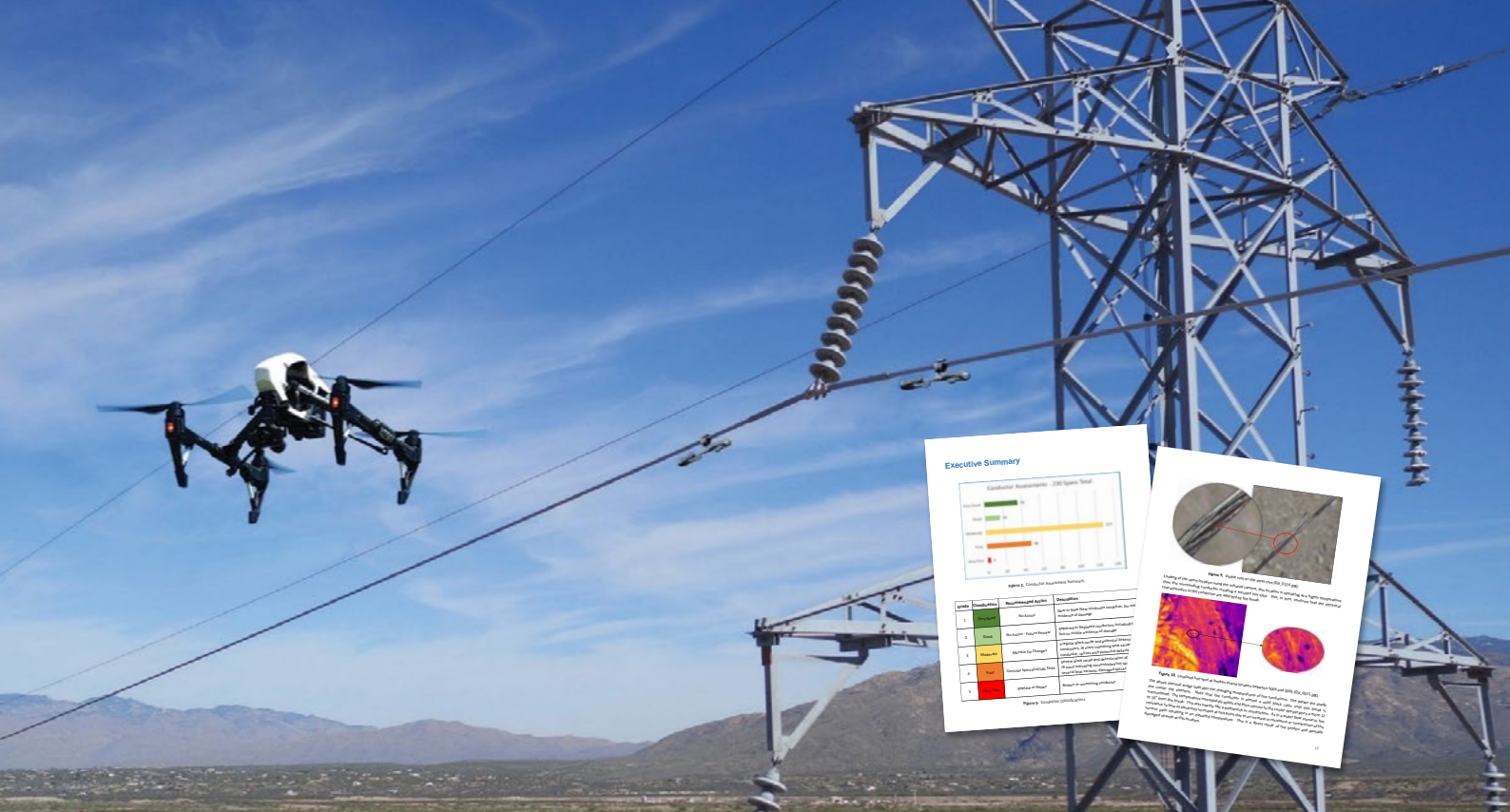
to continuous improvement, TQM, and formalised training programs for employee development, which includes the training of our apprentices in various disciplines.



PLP Logistics Team

The logistics department manages the flow of goods between the customers and PLP subsidiaries around the globe. The team is responsible for ensuring that the goods are delivered safely, on time and at the right price.

PLP logistics is an important and integral part of the company as it involves the integration of information, transportation, warehousing, inventory, material handling and packaging.



PLP Inspection Services

PLP Australia provides energy companies with a safe and economical asset management and inspection service, utilising Unmanned Aerial Vehicles (UAV).

The comprehensive visual inspection service includes radiometric infrared and high-resolution electro-optical image data collection, assessment, and classification of assets by our experienced engineers, secure data management and delivery of a data set including mapped results and a final report to the utility.

PLP inspection services provides the assessment of structural integrity and asset management with a UAV flight services partnership.

Together, we deliver added value to our customers with our combined industry experience and technical capabilities, that enables us to respond to our customer's needs quickly with reliable and precise actionable data.

PLP services include the visual inspection of substations, poles, conductors, and equipment located along the transmission and distribution power lines.

The data collection includes high definition electro-optical (EO) images and Infrared (IR) imagery to examine the condition of the assets.

This collected data set is analysed and reviewed by experienced PLP engineers, organised on a GIS map with colour coded classifications and submitted with a final detailed report.

Inspection services will benefit:

- Utility Substations
- Wind Farms
- Solar Farms
- Generation Facilities
- Transmission & Distribution Infrastructure

PLP's inspection services include:

- Comprehensive Visual Inspection
- As-Built Line Audits
- Storm and Bush Fire Assessments
- Site Surveys
- Hardware and Conductor Measurements
- Corridor Mapping
- Asset Condition Classifications
- Georeferenced and Catalogued Imagery
- 3D Modelling and Measurements
- Thermal Imagery Analysis
- GIS-Mapped Results
- Engineering Reports
- Cloud Cataloguing
- High-Definition E/O and IR imagery



UAV



Inspection



Data Management



Engineering Analysis



Reporting

Quality Control

PLP Australia is committed to being our customers' preferred choice by delivering excellence to build, protect and maintain critical infrastructure.



PLP provides quality products, fit for purpose solutions, exceptional customer service and we keep our promises.

Effective Quality Management

- We maintain a Quality Management System to ensure we produce consistent products in a timely manner.
- We employ qualified personnel to enhance our skill base.
- We provide on-going training to personnel and where required, to our customers.
- We communicate with our customers on a regular basis to ensure their needs are met.
- We maintain an experienced technical base to ensure our products and processes are at industry best practice.
- We continually review, revise, and improve our processes.
- We meet all statutory and applicable standard requirements.
- Our NATA Accredited Testing Laboratory is compliant with ISO/IEC 17025.
- We encourage our suppliers to meet our needs and expectations for our customers.
- We keep up to date with new technologies and the direction that our industry is moving to enable PLP to deliver our products and services more efficiently to our customers and the consumer.



190 Power Street, Glendenning NSW 2761, Australia
PO Box 626, St Marys NSW 1790, Australia
Phone: 1300 550 322 | +61 2 8805 0000 | Fax: +61 2 8805 0090
www.plp.com/au