



## Section 7 - Hardware & Accessories

<b>Table of Contents</b>	<b>Section/Page</b>
Shackles - Galvanised Forged Steel.....	7-2
Clevis Thimble Aluminium.....	7-2
Wire Rope Thimble Closed.....	7-2
Safety Hook Plate.....	7-2
Wire Rope Thimble - Open.....	7-3
Stainless Steel Conical Washer.....	7-3
Eye Tongue - Forged.....	7-3
Link Single Plate.....	7-3
Link (Plate Double).....	7-4
Open Hook Nut Galvanised Steel.....	7-4
ThimbleEyenuT.....	7-4
Yoke Bar for ABC Suspension.....	7-4
M20 and M24 Elongated Eye Bolt.....	7-5
M16 Safety Hook Bolts.....	7-5
M16 Hook Bolts.....	7-5
M16 Round Eye Bolt.....	7-6
ADSS Tension Extension Links.....	7-6
FIBERLIGN® ADSS Cable Storage Bracket.....	7-6
Galvanised Coach Screw Hook.....	7-7
Hook Plate (Heavy Duty).....	7-7
M16 Tongue Bolt Assembly.....	7-7
M16 Galvanised Stud Assembly.....	7-7
Service Support Bracket.....	7-8
M16 Pole Attachment Bracket.....	7-8
M16 Cross Arm Bracket Assembly.....	7-8
M16 EyenuT.....	7-9
4kN Weak Link.....	7-9
DriveHooks.....	7-9
House Hooks (Bridle Rings).....	7-9
Midspan Clamp Type 1.....	7-10
Fibre Optic Cable Marker.....	7-10
Kover Guards.....	7-11
Band Lock.....	7-12
Stainless Steel Strap.....	7-12

# Hardware & Accessories



## S & TS

### Shackles - Galvanised Forged Steel

Part Number (Shackle)	Tension Rating (kN)	Bolt Size (mm)	Standard Pack Quantity
S-070-1	70	M16	25
S-120-1	120	M16	25
S-160-1	160	M20	15
S-210-1	210	M20	15



Part Number (Twisted)	Tension Rating (kN)	Bolt Size (mm)
TS-070-1	70	M16

## ACT

### Clevis Thimble Aluminium

- Corrosion resistant aluminium alloy.
- Galvanised steel pin      • Stainless steel split pin
- ACT-27-16 rated at 70 kN      • ACT-37-16 rated at 80 kN



Part Number	Thimble Bend Radius (mm)	Standard Pack Quantity
ACT-27-16	36	25
ACT-27-16HP	36	25
ACT-37-16	36	25
ACT-37-16HP	36	25

**Note:** HP denotes Hex Pin

## THWC

### Wire Rope Thimble Closed



Part Number	Bend Radius (mm)	Seat Width (mm)	Threaded Length (mm)
THWC-10	12.5	11	150
THWC-12	15	13	150
THWC-16	20	18	150
THWC-20	25	22	150

## GSHP

### Safety Hook Plate



Part Number	Hook Size (mm)	Hole Size (mm)	Tension Rating (kN)	Standard Pack Quantity
GSHP-16	M16	14	3	25

# Hardware & Accessories



## THWO

### Wire Rope Thimble - Open

Part Number	Bend Radius (mm)	Seat Width (mm)	Opened Width (mm)
THWO-10	12.5*	11	14
THWO-12	15*	13	17
THWO-16	20*	18	21
THWO-20-4	25*	22	24
THWO-22	27.5*	24	28

**Note:** Bend radius will be slightly larger on open thimbles.



## SSCW

### Stainless Steel Conical Washer

A Stainless Steel Conical Spring Washer, when compressed by a bolt into timber, the coils compact into each other until the entire form is flat. The volute tapered washer maintains a constant pressure on the bolt ensuring any shrinkage of the timber does not affect the torque of the bolt.

Part Number	Bolt Size (mm)	Standard Pack Quantity
SSCW-12	M12	50
SSCW-16/20	M16 / M20	50
SSCW-24	M24	50



## ET

### Eye Tongue - Forged

Part Number	Tension Rating (kN)	Bolt Size (mm)	Standard Pack Quantity
ET-070-1	70	M16	25
ET-070-22	70	M20	25
ET-120-1	120	M16	-
ET-160-1	160	M20	-

## LSP

### Link Single Plate

Link plates are available in 70, 120 and 160kN. Substitute -070 for -120 or -160 respectively.



Part Number	Rating (kN)	Hole Separation (mm)
LSP-070-100	70	100
LSP-070-150	70	150
LSP-070-200	70	200
LSP-070-250	70	250
LSP-070-300	70	300
LSP-070-350	70	350

# Hardware & Accessories



## L

### Link (Plate Double)

Link plates are available in 70, 120 and 160kN. Substitute -070 for -120 or -160 respectively.

Part Number	Rating (kN)	Hole Separation (mm)
L-070-100	70	100
L-070-150	70	150
L-070-200	70	200
L-070-250	70	250
L-070-300	70	300
L-070-350	70	350



## ENGO

### Open Hook Nut Galvanised Steel

- To suit 16mm and 20mm threaded rods
- Can be attached to thimble eye bolts or standard bolts where it is necessary to connect to a structure

Part Number	Thread Size (mm)	Standard Pack Quantity
ENGO-12	M12	50
ENGO-16	M16	50
IBHNZ4	M20	-



## THEN

### Thimble Eyenut

- Medium duty
- Manufactured for high strength applications
- Suitable for 16mm, 20mm and 24mm rods

Part Number	Tension Rating (kN)	Thimble Bend Radius	Thread Size (mm)
THEN-16	30	20	M16
THEN-20	144	30	M20
THEN-24	144	30	M24
THEN-UNC1	144	30	1"



## YABCOF

### Yoke Bar for ABC Suspension

Double suspension yoke bar provides line deviation by using two suspension clamps.

Part Number	Diameter (mm)	Length - Hook to Hook (mm)	Standard Pack Quantity
YABCOF-16-300	16	300	25

# Hardware & Accessories

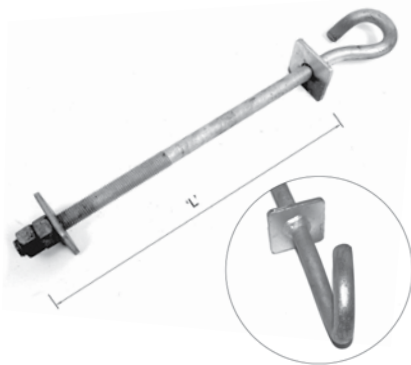


## GEBE

### M20 and M24 Elongated Eye Bolt

- This fitting used with the PLP Anchor
- Other lengths available on request

Part Number (M20)	Part Number (M24)	Length (mm)	Threaded Length (mm)
GEBE-20150	GEBE-24150	150	150
GEBE-20200	GEBE-24200	200	150
GEBE-20250	GEBE-24250	250	150
GEBE-20300	GEBE-24300	300	150
GEBE-20350	GEBE-24350	350	150
GEBE-20400	GEBE-24400	400	150
GEBE-20420	GEBE-24420	420	150
GEBE-20450	GEBE-24450	450	150
GEBE-20500	GEBE-24500	500	150
GEBE-20550	GEBE-24550	550	150
GEBE-20600	GEBE-24600	600	150
GEBE-20650	GEBE-24650	650	150
GEBE-20700	GEBE-24700	700	150
GEBE-20750	GEBE-24750	750	150
GEBE-20800	GEBE-24800	800	150
GEBE-202500	GEBE-242500	2500	150



## GSHB

### M16 Safety Hook Bolts

Made of galvanised steel for use with either wood or concrete poles.

Part Number	Length (mm)	Pole Diameter Range (mm)	Threaded Length (mm)	Bolt Size (mm)
GSHB-16200	200	61 - 160	150	16
GSHB-16300	300	160 - 260	150	16
GSHB-16400	400	261 - 360	150	16
GSHB-16500	500	361 - 460	150	16



## GEB

### M16 Hook Bolts

Made of galvanised steel for use with either wood or concrete poles.

Part Number	Length (mm)	Threaded Length (mm)	Bolt Size (mm)
GEB-16150-T	150	150	16
GEB-16250-T	250	150	16
GEB-16350-T	350	150	16
GEB-16450-T	450	150	16

**Note:** Other lengths available on request.

# Hardware & Accessories



## GEBR M16 Round Eye Bolt

Made of galvanised steel for use with either wood or concrete poles.

Part Number	Length (mm)	Threaded Length (mm)
GEBR-16150	150	100
GEBR-16200	200	100
GEBR-16250	250	100
GEBR-16300	300	100
GEBR-16350	350	100
GEBR-16400	400	100
GEBR-16450	450	100
GEBR-16500	500	100

**Note:** Other lengths available on request.



## GCL ADSS Tension Extension Links

Part Number	Length (mm)	Max Working Load (kN)	Chain Diameter (mm)
GCL-010L-392	392 - 424	12	10
GCL-010L-490	490 - 531	12	10
GCL-010L-1000	1000 - 1062	12	10
GCL-013L-392	392 - 424	24	12



## OFSCCM FIBERLIGN® ADSS Cable Storage Bracket

The FIBERLIGN® Cable Storage Bracket is designed to store excess ADSS or underground fibre optic cable. Excess cable can be utilised for future loop joints or T-offs. Two size available to cater for allowable minimum bend radius of fibre optic cable.

- Standard: Galvanised steel finish
- For Plastic coating finish, contact PLP

Part Number	Minimum Bend Radius (mm)
OFSCCM-02-250	250
OFSCCM-02-400	400

# Hardware & Accessories



## GCSH

### Galvanised Coach Screw Hook

Part Number	Length (mm)	Thread Size
GCSH-16175	175	M16



## GCH

### Hook Plate (Heavy Duty)

Part Number	Hole Sizes (mm)	Hook Size (mm)
D-IBHB12	18	16



## GTB

### M16 Tongue Bolt Assembly

Part Number	Pole Diameter Range (mm)	Length (mm)	Thread Size	Hole Size (mm)	Tongue Thickness (mm)
GTB-16300	160 - 260	300	M16	18	16
GTB-16400	260 - 360	400	M16	18	16
GTB-16500	360 - 460	500	M16	18	16

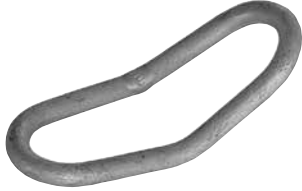


## GSS

### M16 Galvanised Stud Assembly

Part Number	Pole Diameter Range (mm)	Length (mm)	Thread Size
GSS-16300	160 - 260	300	M16
GSS-16400	260 - 360	400	M16
GSS-16500	360 - 460	500	M16

# Hardware & Accessories

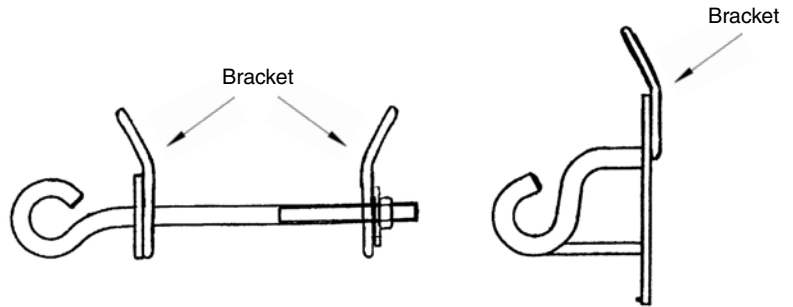


## IBSSB

### Service Support Bracket

- Used as a service strain clamp attachment point
- Used in conjunction with hook bolts hook bolt or hook brackets
- Galvanised Steel

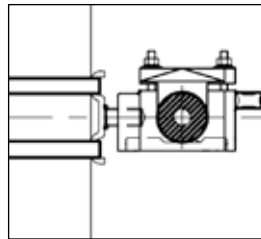
Part Number
IBSSB



## PAS

### M16 Pole Attachment Bracket

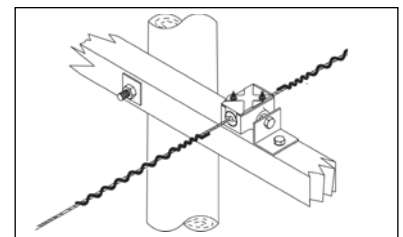
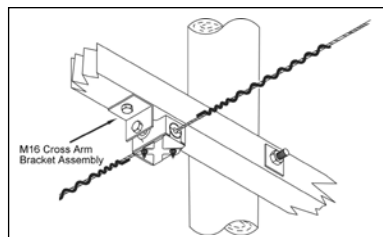
Part Number	Hole Sizes (mm)	Bolt Length (mm)	Bolt Size
PAS-02	14	60	M16



## PAS

### M16 Cross Arm Bracket Assembly

Part Number	Hole Sizes (mm)	Bolt Length (mm)	Bolt Size
PAS-04	18	60	M16





# Hardware & Accessories

ENG-16-1



ENG-20-1



ENG-24-1

## ENG M16 Eye Nut

Screwed onto threaded device to produce eye attachment.

Part Number	Thread size	Thread Length	Material Type	Diameter of Eye Material
ENG-16-1	M16	30	Gal/Steel	12
ENG-20-1	M20	40	Gal/Steel	20
ENG-24-1	M24	45	Gal/Steel	20

## IBWL 4kN Weak Link

- Installed between suspension fitting on pole support fitting
- Will withstand normal loading, but will fail under impact loads
- Eliminates damage to suspension fitting and cables



Part Number	Diameter of Material	Total length	Material Type	Min Failing Load kN
D-IBWL02	6	81	S/Steel	2
D-IBWL04A	10	100	Gal/Steel	4
D-IBWL08	12	100	Gal/Steel	8

## DH Drive Hooks

- For wood poles
- Supports drop cable spans



Part Number	Thread Size	Thread Length (mm)	Total Length (mm)
D-JHOOK	M12	70	175

## GBR House Hooks (Bridle Rings)

- Galvanised
- Supports drop cable spans
- For wood poles and wooden facias



Part Number	Diameter (mm)
GBR-42400008	6

# Hardware & Accessories

## SC

### Midspan Clamp Type 1

Used for drop cable midspan T-offs.



Part Number	Total Length (mm)
GQSC-745-46	Contact PLP

## CMFO

### Fibre Optic Cable Marker



The Fiber Optic Cable Marker is designed to visibly identify fiber optic cable on a wood utility pole or other structure. In addition to marking the cable with a distinct yellow colour, the marking 'CAUTION FIBRE OPTIC CABLE' is used to indicate the cable type. The bright yellow colour is easily identifiable from ground level.

The fiber optic cable marker is manufactured from corrosion resistant, lightweight and thermoplastic material. It provides superior retention of physical characteristics over temperature ranges and exposure to ultra violet radiation.

Part Number	Colour	Cable Diameter Range Inches (mm)	Length (mm)
CMFO-1325-200Y	Yellow	13 - 25	200

**Note:** The Fiber Optic Cable Marker is imprinted with the following information: "CAUTION FIBER OPTIC CABLE". The characters are printed in black lettering and located opposite the installation split. Customised identification markings with COMPANY name available. eg. "CAUTION FIBER OPTIC CABLE - xyz Pty. Ltd." Consult PLP for recommendations.

# Hardware & Accessories

## PKGFL, PKGFR, PKG

### Kover Guards

PREFORMED™ Kover Guards are available for all types of cable including earthwire and fibre optic cable and offer protection from both impact and accidental damage. It is a better alternative to the old steel or wooden earth wire cover strips.

With many advantages such as high strength, light weight and insulation protection, matched with ease of installation, the cost savings are a real benefit.



PKGFL



PKGFR



PKG

#### Features:

- UV stabilised material
- Impact resistant
- Insulation properties
- The option of fire retardant material (PKGFR type)
- In three designs, U shaped, circular fully enclosed or flared
- Corrosion, rot and termite proof

#### Advantages:

- Easy installation
- Low cost
- Electrically safe
- Long life expectancy
- Light weight

Part Number	Internal Diameter (mm)	Length (m)	Material Colour	Profile	Standard Pack Quantity
PKG-019-1.2-G	19	1.2	Grey	U	20
PKG-019-2.8-G	19	2.8	Grey	U	20
PKGFR-020-2.7	20	2.7	Black	O	20
PKGFR-025-2.7	25	2.7	Black	O	20
PKGFL-020-2.0-B	20	2	Black	U	20
PKGFL-020-2.0-G	20	2	Grey	U	20
PKGFL-020-3.0-G	20	3	Grey	U	20
PKGFL-050-2.0-G	50	2	Grey	U	20
PKGFL-050-3.0-G	50	3	Grey	U	20
PKGFL-075-3.0-G	75	3	Grey	U	20

# Hardware & Accessories



## BL Band Lock

The PLP Band Strap System uses the unique Band Lock System to attach fittings safely and securely to steel or concrete poles. Supplied as one unit, it does not require any special tools. Quick and easy installation accepts 12, 16 or 19 mm stainless steel strapping.

Part Number
BL-10



## SSS Stainless Steel Strap

Stainless steel strap comes in 30m roll and available in a number of widths.

Part Number	Reel Length (mm)	Strap Width (mm)
SSS-1230	30	12
SSS-1630	30	16
SSS-1930	30	19



## OFSCCM FIBERLIGN® Cable Storage Bracket

Part Number	Conductor Bend Radius (mm)
OFSCCM-01	530



## SSSB Stainless Steel Buckle

Part Number	Suits Strap Width (mm)
SSSB-12	12
SSSB-16	16
SSSB-19	19